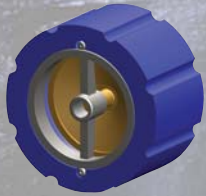


# Cla-Val Check Valves Cla-Val Foot Valves

from the name you trust most for  
top quality waterworks products

**Charles R. Underwood, Inc.**  
serving the people of North and South Carolina since 1965

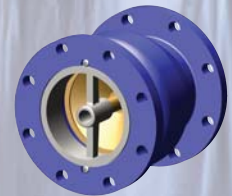


## Series 580 Silent Wafer Check Valve

- Short laying length
- Silent, non-slam closure
- Prevents flow reversal during pump starts and stops
- Water-tight seating

## Series 581 Silent Globe Check Valve

- Stops flow reversal
- Silent, non-slam closure
- Water-tight seating
- Optional resilient seat
- Operates horizontally or vertically



## Series 583 "Tite Seal" Foot Valve

- Full pipe size flow area
- Lowest head loss
- Zero leakage
- For wet well applications
- Heavy duty strainer stops solids from entering the pipeline



## Duckbill Check Valve

- Flanged, In-line Flanged, Jacket and Slip-Over Styles available
- Highly-resistant to corrosion
- Low head loss design
- No moving parts
- Wide variety of elastomer choices



*CRU is an authorized  
Cla-Val Master Distributor*

2189 Everett Dowdy Road • Sanford, North Carolina 27330  
ph: 800.729.2463 • fax: 919.708.7232  
email: [sales@crupumps.com](mailto:sales@crupumps.com)