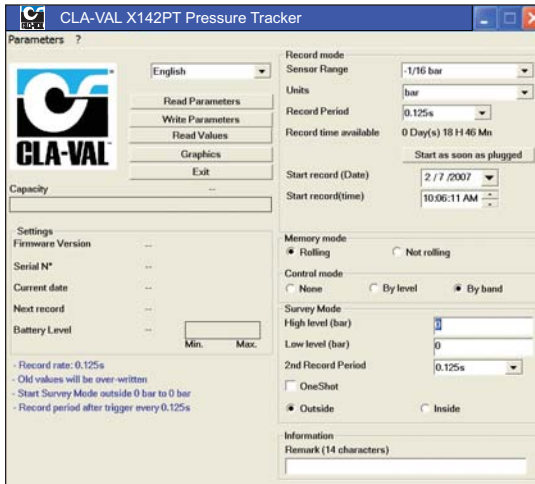




— MODEL — **X142PT**

Pressure Tracker



- The X142PT Pressure Tracker is a data acquisition device developed to log performance in such applications as pressure reducing valve stations, pump stations, and altitude valve installations.
- It can also be used to track surge, monitor pressure and determine when valve maintenance is required.



Technical Data

Data Recording:	540,000 points (YYYY/MM/DD, MM:SS, Pressure)
Pressure Range:	-14.5 to 232 psi standard Other ranges optional. 1/4" NPT
Flow range [option D]:	Settable (pulse input)
Sampling Rate:	0, 125 seconds to 1 hr or, self-adaptive
Accuracy:	<+/- 1%
Battery Powered:	Rechargeable battery Lithium-Ion
Discharge Time (100%):	Type 1 year, automatic recharge through USB connection at 68° F
Operating Temp. Range:	-4° F to +149° F
Protection:	IP67, IP68
Utilization:	Plug & Play
Sensor:	Ceramic
Calibration:	Factory - Field
Software:	NT/ 2000/ XP

Logging Program

- Delayed start (calendar)
- Immediate start (as soon as connected)

Continuous & Event Data Logging

Automatically changes between **continuous** acquisition mode (record mode) and the **event** acquisition mode (survey mode) based on the trigger parameters

- Trigger:**
- **Level:** Under or over a preset value
 - **Band:** Inside or outside of defined band
- Memory:**
- One shot, complete event record after triggered and then stopped
 - Stop when store complete or rotating store

Software: User friendly CLA-VAL Software allows for easy programmable control features. All logger settings are directly typed in according to desired values. The unique built in automatic switch between Record mode and Survey mode offers a high level of problem solving.

Internet Updates: All software updates are free and directly available on the CLA-VAL web site.

USB PC Connection: Plugs directly in your PC USB port. Data is instantly accessible in a universal .TXT format. A check LED acknowledges the communication mode, as well as the test/acquisition mode when connected to the sensor.

Automatic Rechargeable Battery: During the download of the data, the X-142PT will recharge itself automatically through the USB port and display available energy level.

540,000 points Memory: Non volatile solid state memory constantly displays available memory. If the battery is discharged, data is not lost.

Logging Capability: Data can be downloaded simultaneously without disturbing logging.

Clock Synchronization: The X142PT is automatically linked to your PC time. The stability of its internal clock allows it to measure synchronized different event in several locations.

Cable is required for programming of X142PT

X142PT IP-67 Weather-Tight Rated USB Cable Connection

X142PT
Pressure Tracker



X142PT Pressure Sensor
(IP-68)



USB Cable (IP-67)
p/n 205576-01J

X142PT IP-68 Submersible Rated USB Cable Connection

X142PT
Pressure Tracker



USB Cable (IP-67)
p/n 205192-03A



X142PT Pressure Sensor
(IP-68)

To learn more about Cla-Val Electronic Products or
to download programming software, visit www.cla-val.com



CLA-VAL

PO Box 1325 Newport Beach CA 92659-0325
Phone: 949-722-4800 • Fax: 949-548-5441

CLA-VAL CANADA

4687 Christie Drive
Beamsville, Ontario
Canada L0R 1B4
Phone: 905-563-4963
Fax: 905-563-4040

CLA-VAL EUROPE

Chemin des Mesanges 1
CH-1032 Romanel/
Lausanne, Switzerland
Phone: 41-21-643-15-55
Fax: 41-21-643-15-50

©COPYRIGHT CLA-VAL 2009 Printed in USA
Specifications subject to change without notice.

www.cla-val.com

Represented By: