



The key to smoother pump stops and starts

Cla-Val Pump Control Valves prevent surge conditions from occurring during normal pump stops and starts, minimizing column separation and water hammer while reducing the frequency of pipe breaks caused by sudden changes in flow velocity.

- The double-chamber configuration enables gradual opening and closing to prevent surges while eliminating backflow
- Provides true linear opening and closing by maintaining constant speed throughout the entire operation
- Solenoid controlled, ideal for SCADA systems, with multiple voltage choices
- Fully field adjustable for changing system requirements
- Integral limit switch for pump shut-off
- Less expensive than other pump control valves
- Provides longer service life than piston valves used in the same application
- More cost-effective, requiring less maintenance than other product options

Cla-Val Pump Control Options



60 Series Booster Pump Control Valve



61 Series Deep Well Pump Control Valve

For the ultimate in pump control and protection from surge

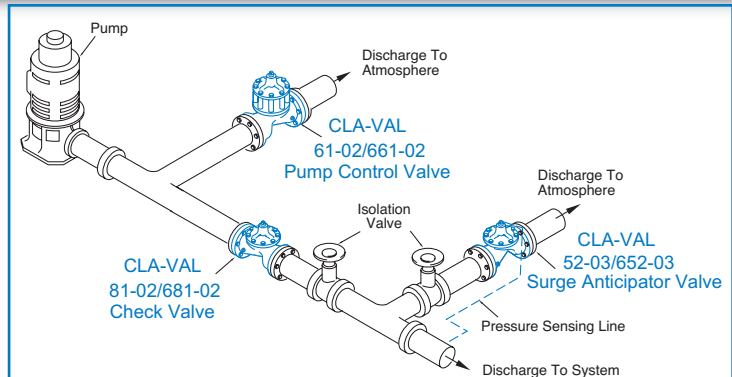
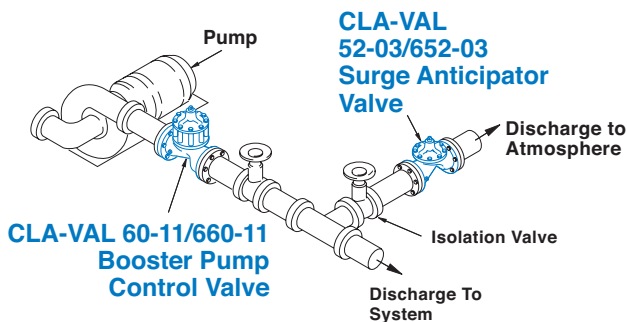
In systems prone to power failures or other sudden “pump-stopping” conditions, your best option is a Cla-Val Pump Control Valve used in conjunction with a Cla-Val 52 Series Surge Anticipator Valve.

The surge anticipator valve opens on the initial low pressure wave following a power failure or other similar event, diverting the returning high pressure wave from the system and dissipating the damage-causing surge. The valve will then close slowly without generating any further pressure surges.



Model 52-03 Surge Anticipator Valve

Typical Installations



To learn more, visit www.cla-val.com and type **Pump Control** in the search field or contact the **Cla-Val Sales Agent** nearest you

Innovation...Experience...Know-How

As a leading manufacturer of automatic control valves, Cla-Val has served the following markets since 1936:

- Waterworks
- Fire Protection
- Aviation Ground Fueling
- Marine and Shipboard Service

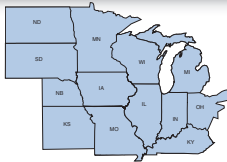
We offer many advantages to our customers worldwide, including the following:

- In-house Engineering Department
- Onsite investment and sand casting foundries able to pour more than 50 different metals and alloys
- 20-acre manufacturing facility in Costa Mesa, CA
- Production facilities in Perris, CA; Ontario, Canada; Switzerland; the United Kingdom; and France
- Extensive technical training capabilities

Visit us online at www.cla-val.com

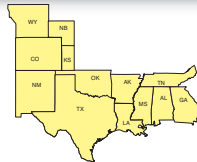


Northern US



800.238.7070
cla-valNR@cla-val.com

Southern US



800.336.7171
cla-valSR@cla-val.com

Eastern US



800.451.3030
cla-valER@cla-val.com

Western US



800.247.9090
cla-valWR@cla-val.com

Northwestern US



GC Systems: 800.525.9425
cla-valNWR@cla-val.com

International

Cla-Val Factory: 949.722.4800
(ask for Export Dept.)
cla-valEX@cla-val.com

Canada

Cla-Val Canada: 905.563.4963
canada@cla-val.ca



M-Smooth Pump Stops and Starts

CLA-VAL

PO Box 1325 Newport Beach CA 92659-0325

800-942-6326 • Fax: 949-548-5441 • Web Site: cla-val.com • E-mail: claval@cla-val.com

CLA-VAL CANADA
4687 Christie Drive
Beamsville, Ontario
Canada LOR 1B4
Phone: 905-563-4963
Fax: 905-563-4040
E-mail sales@cla-val.ca

CLA-VAL EUROPE
Chemin des Mésanges 1
CH-1032 Romanel/
Lausanne, Switzerland
Phone: 41-21-643-15-55
Fax: 41-21-643-15-50
E-mail: cla-val@cla-val.ch

CLA-VAL UK
Dainton House, Goods Station Road
Tunbridge Wells
Kent TN11 2 DH England
Phone: 44-1892-514-400
Fax: 44-1892-543-423
E-mail: info@cla-val.co.uk

CLA-VAL FRANCE
Porte du Grand Lyon 1
ZAC du Champ du Périer
France - 01700 Neyron
Phone: 33-4-72-25-92-93
Fax: 33-4-72-25-04-17
E-mail: cla-val@cla-val.fr

©COPYRIGHT CLA-VAL 2008 Printed in USA. Specifications subject to change without notice.