



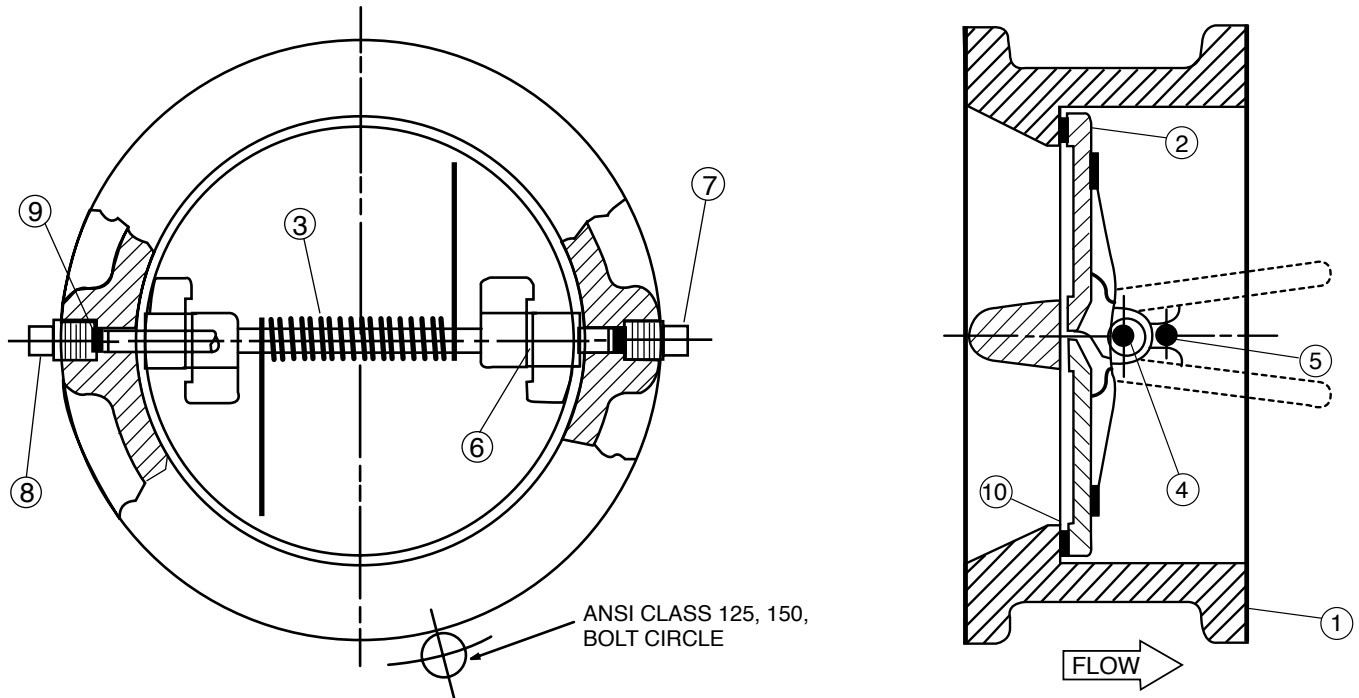
Series 582SWS

Plain Ends 14" thru 24"

Two-Door Wafer Check Valve For Seawater Service



Sizes 14" & 16" only



Part No.	Name	Material	Part No.	Name	Material
1	Body	Aluminum Bronze ASTM B148, Alloy 95200 w/ Buna-N® Resilient Seat Molded to Body	6	Door Thrust Bearing	Monel ASTM B164, Alloy N04400
2	Door	Aluminum Bronze ASTM B148, Alloy 95200	7	Hinge Pin Retainer	Monel 400
3	Torsion Springs	Inconel X750, ASTM B637 Alloy N04400	8	Stop Pin Retainer	Monel 400
4	Door Hinge Pin	Monel ASTM B164, Alloy N04400	9	Stabilization Sphere	Buna-N®
5	Door Stop Pin	Monel ASTM B164, Alloy N04400	10	Spacer (2" - 12" Sizes)	Monel ASTM B164, Alloy N04400

Dimensions (In Inches)

ANSI CLASS 150						
Size	Model	A	B	C	D	E
14	582SWS.14	7 1/4	17 3/4	3 1/8	14 3/8	12 1/2
16	582SWS.16	7 1/2	20 1/4	4 1/2	16 3/8	15
18	582SWS.18	8	21 5/8	5 3/8	18 3/8	17
20	582SWS.20	8 3/8	23 7/8	6 3/8	20 1/4	19
24	582SWS.24	8 3/4	28 1/4	8 1/2	24 1/4	23

Pressure - Temperature Rating

Temp °F.	Maximum Non-Shock Pressure PSI (Class 150 Ni-Al-Brz)
-20 to 100°F	195
150°F	165
200°F	155
Hydrostatic Test Pressure	300

Sizes 14" & 16" utilize (1) torsion spring.

Sizes 18" & Larger utilize (2) torsion springs

Cla-Val Check Valves can only be used for Horizontal flow or vertical flow-up applications.

Caution: Horizontal flow applications, valve must be installed with the disc hinge in the vertical position.

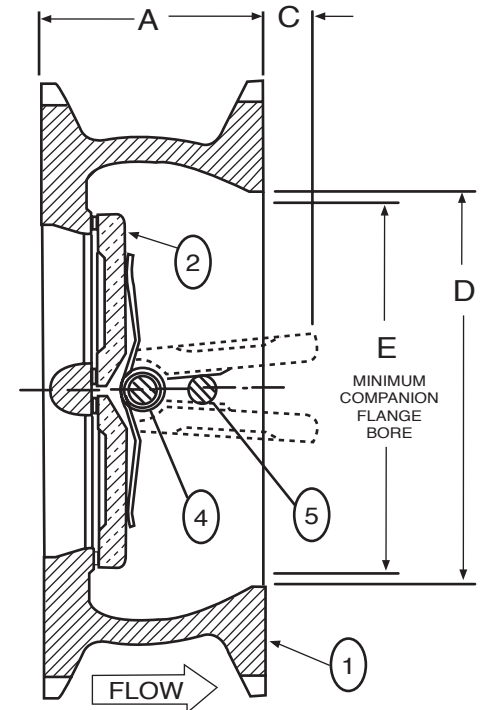
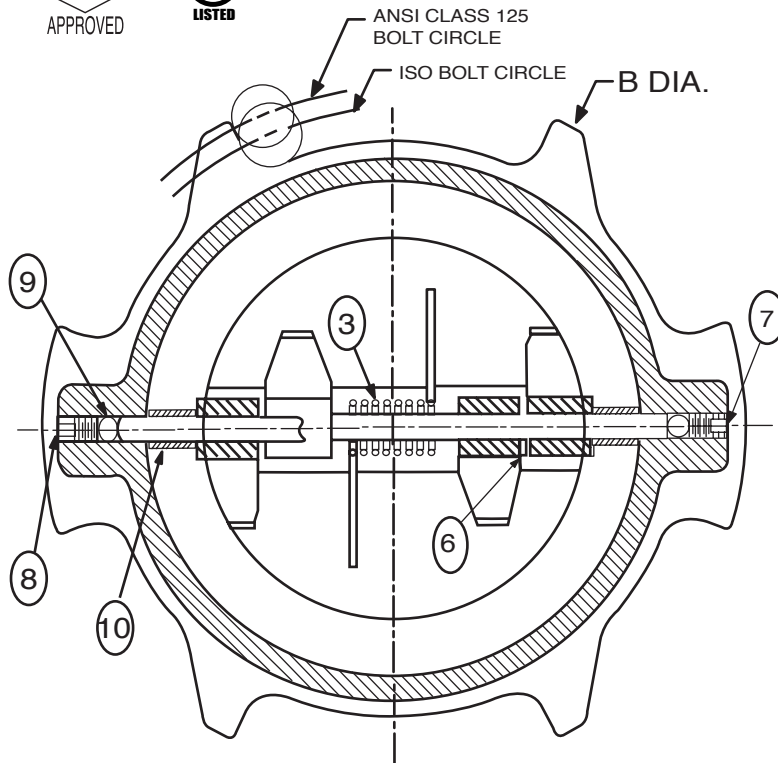
All sizes supplied with lifting eyebolt.



Series 582SWS

Wing Ends 6" thru 12"

Two-Door Wafer Check Valve



Part No.	Name	Material	Part No.	Name	Material
1	Body	Aluminum Bronze ASTM B148, Alloy 95200 w/ Buna-N® Resilient Seat Molded to Body	6	Door Thrust Bearing	Monel ASTM B164, Alloy N04400
2	Door	Aluminum Bronze ASTM B148, Alloy 95200	7	Hinge Pin Retainer	Monel 400
3	Torsion Springs	Inconel X750, ASTM B637 Alloy N04400	8	Stop Pin Retainer	Monel 400
4	Door Hinge Pin	Monel ASTM B164, Alloy N04400	9	Stabilization Sphere	Buna-N®
5	Door Stop Pin	Monel ASTM B164, Alloy N04400	10	Spacer (2" - 12" Sizes)	Monel ASTM B164, Alloy N04400

Dimensions (In Inches)

ANSI CLASS 150 - ISO PN10 / PN16						
Size (Inches)	Model	A	B	C	D	E
6	582SWS.6	3 3/4	8 5/8	13/16	6 1/4	4 1/4
8	582SWS.8	5	12 1/4	1	8	5 1/2
10	582SWS.10	5 1/2	14 3/4	2 1/16	10 1/4	8 1/2
12	582SWS.12	7 1/8	17 3/8	1 15/16	12	9 1/4

Pressure - Temperature Rating

Temp °F.	Maximum Non-Shock Pressure PSI (Class 150 Ni-Al-Brz)
-20 to 100°F	195
150°F	165
200°F	155
Hydrostatic Test Pressure	300

Cla-Val Check Valves can only be used for Horizontal flow or vertical flow-up applications.

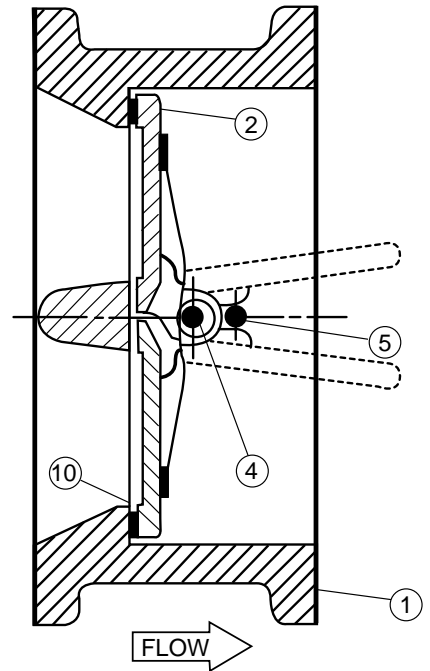
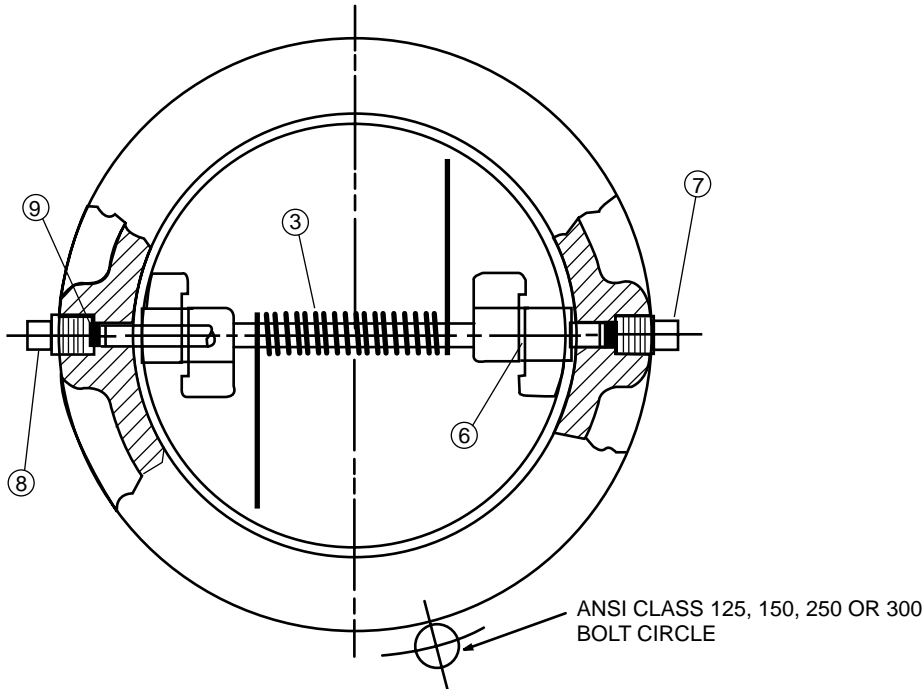
Caution: Horizontal flow applications, valve must be installed with the disc hinge in the vertical position.



Two Door Check Valve Spare Parts Kits Prices

Explanation

Spare parts for Cla-Val Two Door Check Valves are readily available in a kit. Each kit includes all internal parts as shown below.



How to Order

Kit No. and Size	Price	Kit No. and Size	Price
SPK582-2"	\$ 88	SPK582-14"	Consult Factory
SPK582-2 1/2"	88	SPK582-16"	"
SPK582-3"	108	SPK582-18"	"
SPK582-4"	143	SPK582-20"	"
SPK582-5"	231	SPK582-24"	"
SPK582-6"	231	SPK582-30"	"
SPK582-8"	351	SPK582-36"	"
SPK582-10"	486	SPK582-42"	"
SPK582-12"	706	SPK582-48"	"
Above Include Bronze Doors			
SPKi-8810.2	561	Includes Ductile Iron Electroless Nickel Plated Doors	
SPK582-10.2			
SPKi-8812.2	803		
SPK582-12.2			

Check Valve Spare Parts Kit

Part	Description	Material
1	Body	Cast Iron (not included)
2	Doors	Bronze
3	Spring	Stainless Steel
	(qty 2 springs on 18" and larger)	
4	Hinge Pin	Stainless Steel
4B	Shaft Collar	Stainless Steel
	(Item 4B on 36" and larger sizes only)	
5	Stop Pin	Stainless Steel
6	Bearing (qty 4)	Stainless Steel
7	Hinge Pin Ret.	Steel (not included)
8	Stop Pin Ret.	Steel (not included)
9	Stab. Sphere	Buna-N®