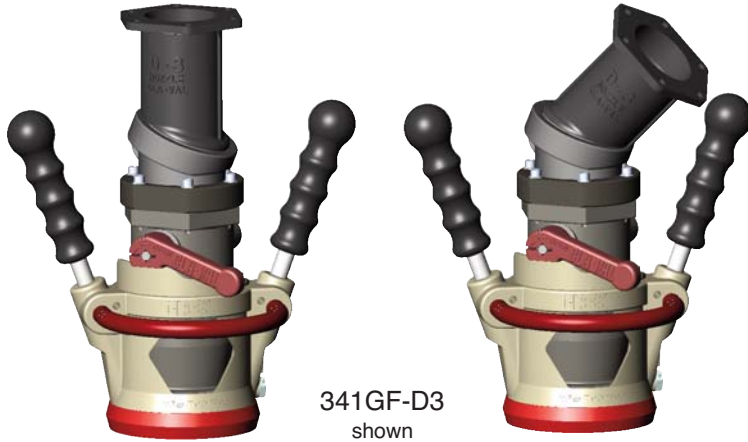




—MODEL— **341GF Series**

# Military Refueling Nozzle



341GF-D3  
shown

- D-3 Swivel Adjusts to Reduce Hose Stress
- Lowest Nozzle Pressure Drop
- Conforms to SAE-AS5877
- Connects to MS24484 Single Point Adapter
- All Aluminum and Stainless Steel Construction
- Compact Swivel for Easier Aircraft Connections
- Safety Interlock with Square Pins
- Proper Attachment Required to Open the Nozzle
- Convenient Guard Bar Hand Grip
- Guard Bar Protects Operating Handle
- D1 & D2 Swivels also Available

The Cla-Val Model 341GF Series Nozzle is an “underwing” refueling nozzle for pressure fuel servicing of fixed wing aircraft, other types of aircraft, and for bottom loading of tank trucks. The Model 341GF Series, fitted with the D-3 Swivel Inlet, replaces both the D-1 and D-2 nozzles. The 341GF Series Nozzle is equipped with a unique inlet assembly that adjusts to connect to adapters located on the fuselage and/or under wing. By twisting the inlet assembly, it quickly and easily changes from 0° to 45° configurations, or any configuration in between.

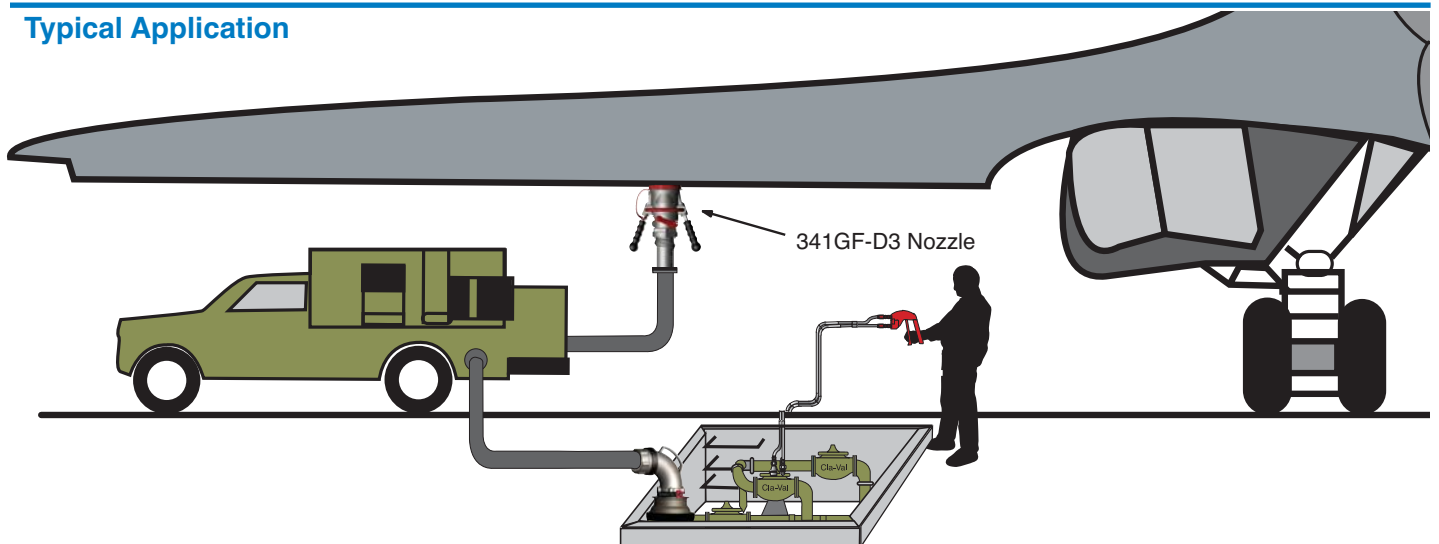
To ensure maximum safety during refueling, the Cla-Val 341GF Series Nozzle has primary and secondary interlock systems. The primary interlock ensures that the nozzle cannot be opened when it is not connected to an aircraft adapter. The secondary interlock protects the 341GF Series Nozzle from hazards of interfacing with badly worn aircraft adapters. Even when used with a badly worn adapter, the nozzle is safer because it uses square register pins that provide positive alignment with the square slots in the adapter. In addition, the nozzle cannot be removed from the adapter until the operating lever is rotated to the fully-closed position.

To achieve maximum strength and durability, the Cla-Val 341GF Series Nozzle uses a stainless steel bayonet ring cast within the

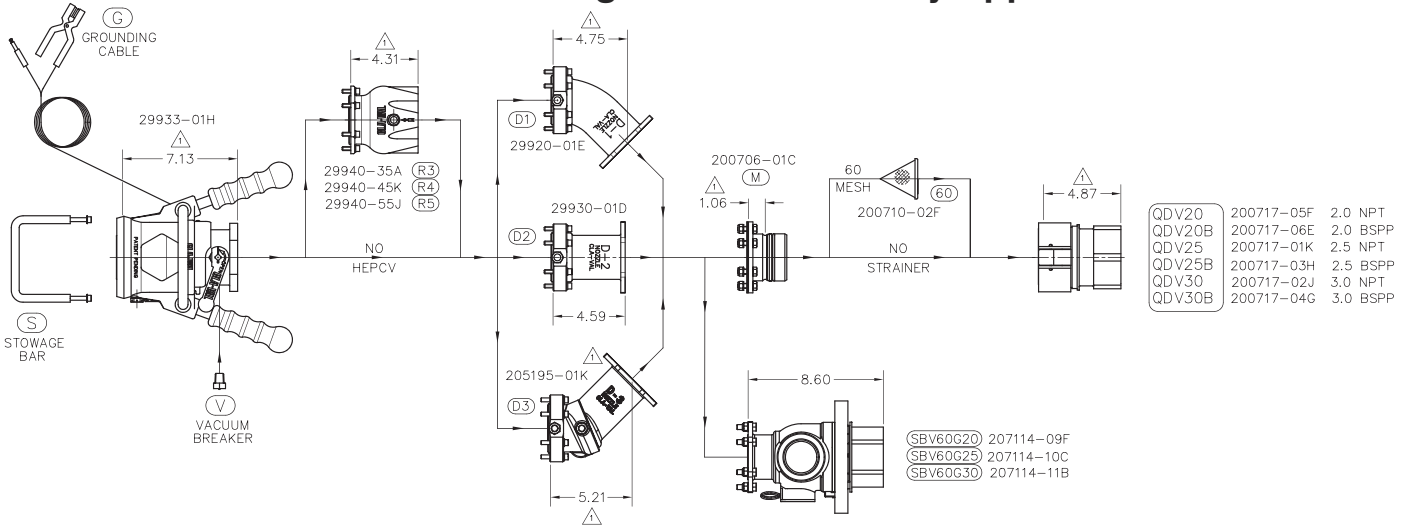
aluminum collar of the nozzle. The crank shaft of the nozzle extends across the entire width of the interior flow path and is supported from end-to-end by a structural wall that splits the flow path. This wall supports the crank shaft while straightening the flow and keeping flow resistance as low as possible. The 341GF Series inlet assembly includes one or two compact swivel joints that allow the nozzle to swivel on the delivery hose or pantograph, resulting in easier connections regardless of the orientation of the aircraft adapter. To reduce aircraft refueling times, the flow resistance through the Cla-Val 341GF Series Nozzle has the lowest head loss, which means it can fill an aircraft faster than any other nozzle.

Many accessories are available for the 341GF Series Nozzle. Hose End Pressure Control Valves (HEPCV) are available in 35 psi, 45 psi and 55 psi settings. A Strainer, fitted either to a Male QD Adapter or a Strainer Ball Valve, is available with 40, 60 and 100 mesh screens. A Strainer Ball Valve allows for the inspection and cleaning of the Strainer without spilling a single drop of fuel. Dry Break Quick Disconnects are available with 2-inch, 2.5 inch and 3-inch threads in both NPT and BSPP. A Vacuum Breaker, Bonding Cable and Storage Bar are also available options. Please refer to the drawing and model numbering scheme on the back of this sheet.

## Typical Application

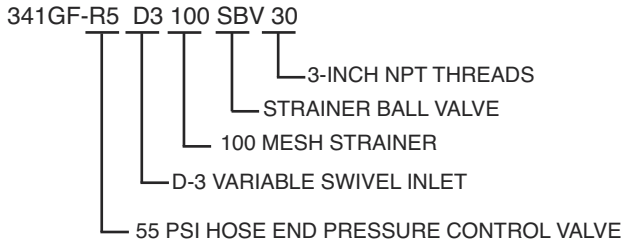
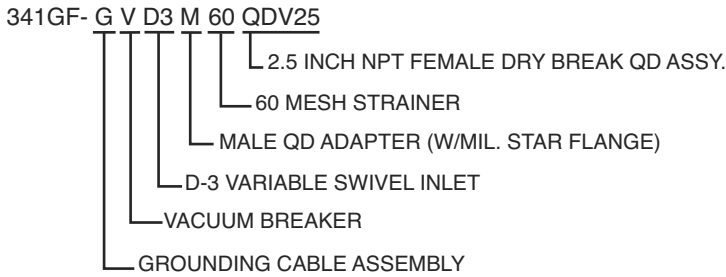


# 341GF Series Refueling Nozzle for Military Applications



## Create Complete Model Numbers for Various Applications

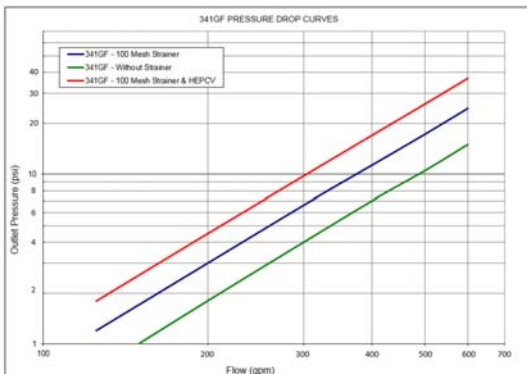
It is easy to "customize" a 341GF Series to special requirements. Complete model numbers always begin with "341GF Series". Add your option selections to this base model number, following the flow chart above from left to right. See example below.



## Available Options Added To 341GF Series Nozzle

G	Ground Cable Assembly
V	Vacuum Breaker
R3	35 PSI Pressure Regulator
R4	45 PSI Pressure Regulator
R5	55 PSI Pressure Regulator
D-1	D-1 Elbow Swivel Inlet
D-2	D-2 Straight Swivel Inlet
D-3	D-3 Variable Swivel Inlet
M	Male Quick Disconnect Adapter (Mil. Star Flange)
40	40 Mesh Strainer
60	60 Mesh Strainer
100	100 Mesh Strainer
QDV	Dry Break Quick Disconnect
SBV	Strainer Ball Valve
20	2-inch NPT Threads
20B	2-inch BSPP Threads
25	2.5-inch NPT Threads
25B	2.5-inch BSPP Threads
30	3-inch NPT Threads
30B	3-inch BSPP Threads

## Pressure Drop Data



## Operating Temperature Range

-40 to +130° F

visit [www.cla-val.com](http://www.cla-val.com) to learn more about our complete range of fueling products