



Valve Position Indicator

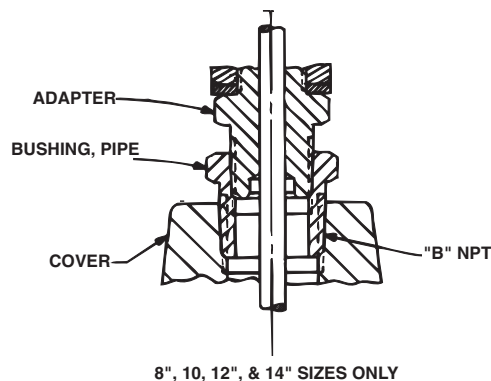
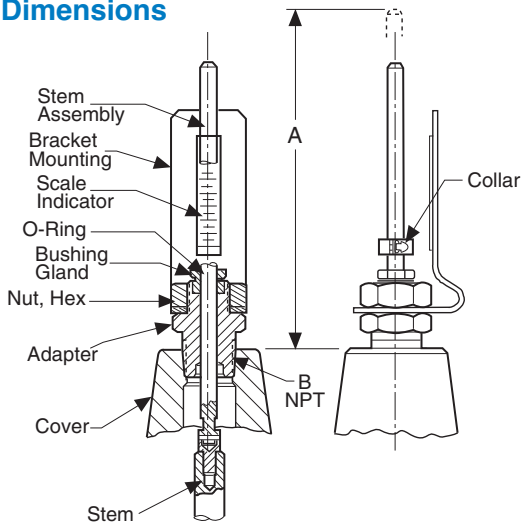


- **UL/ULC Listed**
- **Accurate Percent of Opening Scale**
- **Positive Visual Indicator**
- **Frictionless**
- **Easy to Read**

The Cla-Val Model X101C Valve Position Indicator is designed to display Cla-Val valve position quickly and easily. A solid stainless steel indicator rod is fastened directly to the valve stem. The adjustable indicator is a collar attached to this rod. The percent of opening scale is attached to the mounting bracket. As the valve opens and closes, the percent open is read directly from the indicator scale.

The Model X101C is furnished complete for installation on specified size Cla-Val Automatic Control Valve.

Dimensions



Valve Size	A INCHES	B NPT
1 1/4"	10.19	1/4
1 1/2"	10.19	1/4
2"	7.45	1/2
2 1/2"	7.17	1/2
3"	7.34	1/2
4"	7.00	3/4
6"	6.69	3/4
8"	6.90	1
10"	9.88	1
12"	9.59	1 1/4
14"	9.16	1 1/2
16"	11.00	2
18"	9.76	2
20"	10.09	2
24"	11.41	2
30"	12.75	2
36"	13.91	2

Specifications

Sizes: 1 1/2" thru 30"

Materials: Brass, Stainless Steel

Pressure Rating: 400 psi

Installation

Can be installed on any Cla-Val basic main valve in a few minutes. Simply replace the fitting on top of the valve cover with the indicator assembly.

When Ordering, Please Specify

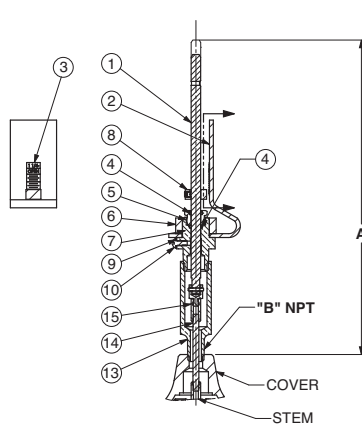
1. Valve Size
2. Catalog No. X101C
3. Valve Series No. (Appears on Valve Nameplate)

Dimension "A" is height added to valve by indicator assembly.

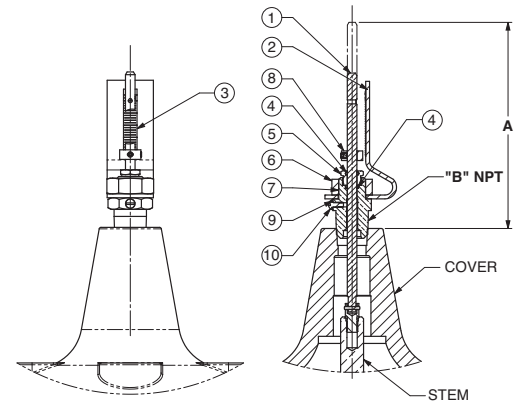
The Model X101C is included with FM Approved valves in 3", 4", 6", 8" sizes.

PARTS LIST

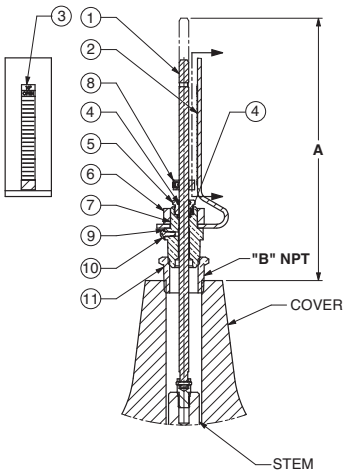
ITEM NO.	QTY.	DESCRIPTION
1	1	ACTUATING STEM ASSEMBLY
2	1	BRACKET, X101C
3	1	SCALE, INDICATOR X101C
4	2	O-RING (2-011)
5	1	BUSHING, GLAND
6	1	NUT, HEX JAM
7	1	ADAPTER, X105L
8	1	COLLAR ASSEMBLY, X105L
9	1	WASHER, FLAT
10	1	SCREW, ROUND HEAD #8-32 UNC
11	1	BUSHING, PIPE, HEX (8" & LARGER)
12	1	BELL REDUCER (16" SIZE ONLY)
13	1	ADAPTER (1 1/4"-1 1/2" SIZES ONLY)
14	1	STUD THREADED #10-32 UNF (1 1/4"-1 1/2" SIZES ONLY)
15	1	ADAPTER, X103A (1 1/4"-1 1/2" SIZES ONLY)



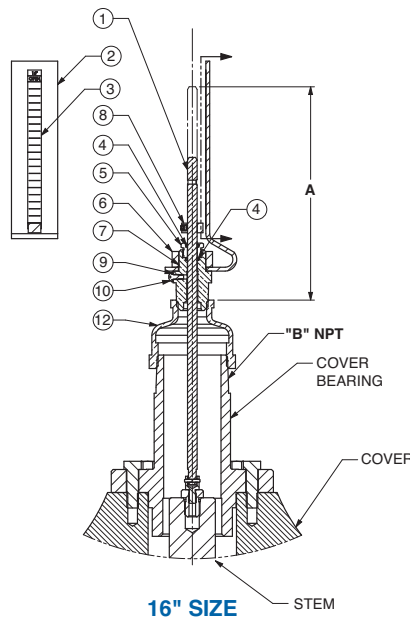
1 1/4" THRU 1 1/2" SIZES
(1 1/2" SIZE SHOWN)



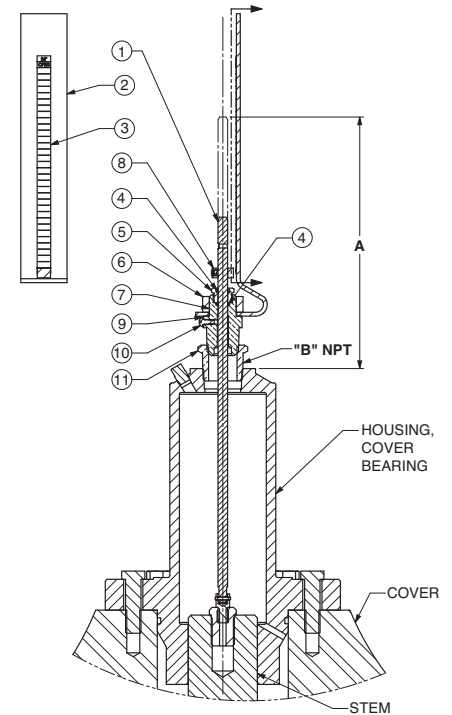
2" THRU 6" SIZES
(6" SIZE SHOWN)



8" THRU 14" SIZES
(10" SIZE SHOWN)



16" SIZE



18" THRU 36" SIZES
(24" SIZE SHOWN)



E-X101C (R-03/2021)

CLA-VAL

1701 Placentia Avenue • Costa Mesa, CA 92627
800-942-6326 • Web Site: www.cla-val.com • E-mail: info@cla-val.com

CLA-VAL CANADA
4687 Christie Drive
Beamsville, Ontario
Canada L0R 1B4
Phone: 905-563-4963
www.cla-val.com
E-mail: sales@cla-val.ca

CLA-VAL EUROPE
Chemin des Mésanges 1
CH-1032 Romanel/
Lausanne, Switzerland
Phone: 41-21-643-15-55
www.cla-val.ch
E-mail: info@cla-val.ch

CLA-VAL UK
Dainton House, Goods Station Road
Tunbridge Wells
Kent TN1 2 DH England
Phone: 44-1892-514-400
www.cla-val.ch
E-mail: info@cla-val.co.uk

CLA-VAL FRANCE
Porte du Grand Lyon 1
ZAC du Champ du Périer
France - 01700 Neyron
Phone: 33-4-72-25-92-93
www.cla-val.ch
E-mail: info@cla-val.ch

CLA-VAL ASIA PACIFIC
45 Kennaway Road
Woolston, Christchurch, 8023
New Zealand
Phone: 64-39644860
www.cla-valpacific.com
E-mail: info@cla-valpacific.com

visit www.cla-val-latinamerica.com for Spanish literature