



— MODEL — **X143IP**

# Intermediate Power Generator

## Product Description

The X143IP Intermediate Power Generator is a self-contained, power generation system designed to be mounted on a Cla-Val Automatic Control Valve.

The X143IP uses the pressure drop across the valve to produce up to 14 watts of power to run electronic equipment located at the valve site.

## Product Features

- Designed to be installed within the pilot system of a Cla-Val Automatic Control Valve
- Factory installed or field retrofittable to an existing valve
- Up to 14 watts continuous draw
- Up to 42 watts non-continuous draw
- 12 psi differential pressure minimum at 15 gpm
- 12 Volt Battery with 12 and/or 24 VDC Output
- Automatic shutdown of the X143IP when battery is fully charged helps to maximize both battery and generator life span
- Applications include powering electronic valve controls, data loggers, position controls and communications equipment



patent pending

## Typical Schematic Diagram

### Supplied Equipment

- 1 Power Generator Unit
- 2 Electronics & Battery Housing
- 3 CK2 Isolation Valve
- 4 X43 "Y" Strainer

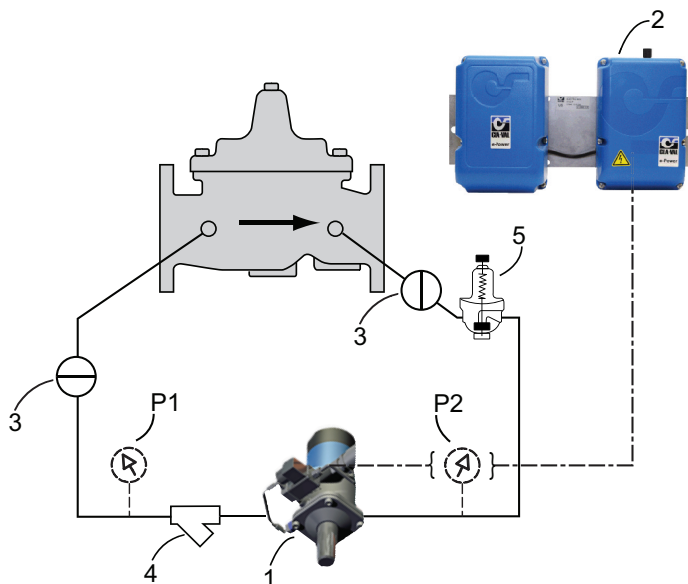
### Optional Equipment

- P X141 Pressure Gauge  
5 CRD-L Pressure Reducing Valve

**Note:** Maximum inlet pressure is 150 psi.  
Please consult factory if pressure is above 150 psi.

## Power Generator Specifications

- 12V DC or 24V DC output
- 12 PSI minimum differential pressure required
- Up to 14 watts generator power output
- 3/4-inch female connection
- Upper recharging threshold: 13.5 VDC
- Lower recharging threshold: 12 VDC



1



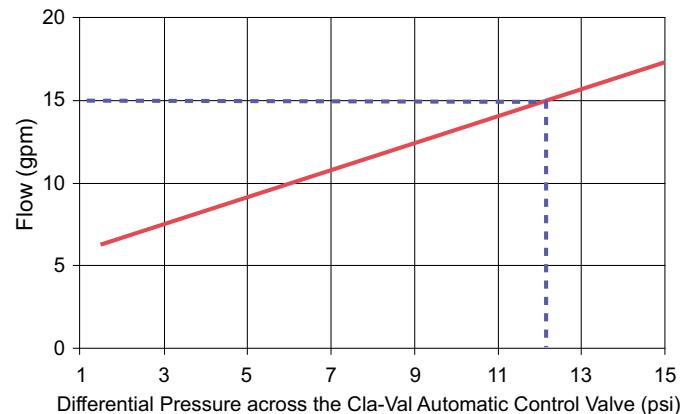
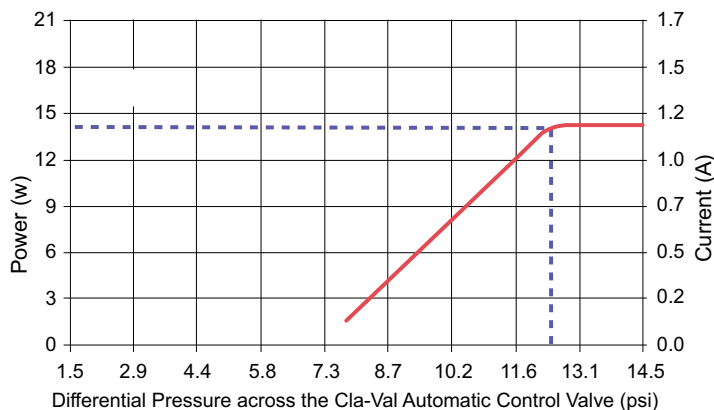
2

visit [www.cla-val.com](http://www.cla-val.com)  
to learn more about this and other  
Electronic Products

# Power Output

Voltage Output	Maximum Continuous (24h/24)	Maximum Non-Continuous
12 volts	1.2 A (14 W)	3.5 A (42 W)
24 volts	0.6 A (14 W)	1.7 A (42 W)

## Power and Flow Charts



**Typical Installation:** Pressure Reducing Valve Station X143IP providing power to operate electronic valve controls, and the Cla-Val X144 e-FlowMeter

**Easy retrofit:** The X143IP Power Generator is installed as part of the pilot system of an existing Cla-Val Automatic Control valve to provide power without compromising valve performance and without tying into the grid

## CLA-VAL

1701 Placentia Avenue • Costa Mesa, CA 92627

800-942-6326 • Web Site: [www.cla-val.com](http://www.cla-val.com) • E-mail: [info@cla-val.com](mailto:info@cla-val.com)

### CLA-VAL CANADA

4687 Christie Drive  
Beamsville, Ontario  
Canada L0R 1B4  
Phone: 905-563-4963  
[www.cla-val.com](http://www.cla-val.com)  
E-mail: [sales@cla-val.ca](mailto:sales@cla-val.ca)

### CLA-VAL EUROPE

Chemin des Mésanges 1  
CH-1032 Romanel/  
Lausanne, Switzerland  
Phone: 41-21-643-15-55  
[www.cla-val.ch](http://www.cla-val.ch)  
E-mail: [info@cla-val.ch](mailto:info@cla-val.ch)

### CLA-VAL UK

Dainton House, Goods Station Road  
Tunbridge Wells  
Kent TN11 2 DH England  
Phone: 44-1892-514-400  
[www.cla-val.ch](http://www.cla-val.ch)  
E-mail: [info@cla-val.co.uk](mailto:info@cla-val.co.uk)

### CLA-VAL FRANCE

Porte du Grand Lyon 1  
ZAC du Champ du Périer  
France - 01700 Neyron  
Phone: 33-4-72-25-92-93  
[www.cla-val.ch](http://www.cla-val.ch)  
E-mail: [info@cla-val.ch](mailto:info@cla-val.ch)

### CLA-VAL ASIA PACIFIC

45 Kennaway Road  
Woolston, Christchurch, 8023  
New Zealand  
Phone: 64-39644860  
[www.cla-valpacific.com](http://www.cla-valpacific.com)  
E-mail: [info@cla-valpacific.com](mailto:info@cla-valpacific.com)