

CLA-VAL *Deluge Valves*



Cla-Val Automatic Control Valves



Choosing a Deluge Valve

	ACTUATION	HYDRAULIC	PNEUMATIC
STANDARD	MANUAL	-UA (Page 3) -UB (Page 4)	-UD (Page 6)
	SOLENOID	-UP (Page 9)	-UR (Page 10)
LATCHING	MANUAL	-UBL (Page 4) -UC (Page 5)	-UDL (Page 6)
	SOLENOID	-UPL (Page 9)	-URL (Page 10)
REGULATING	MANUAL	-UBR (Page 4)	-UDR (Page 6)
	SOLENOID	-UPR (Page 9)	-URR (Page 10)
LATCHING REGULATOR	MANUAL	-UBRL (Page 4)	-UDRL (Page 6)
	SOLENOID	-UPRL (Page 9)	-URRL (Page 10)
FAIL LAST POSITION	STANDARD	-UT (Page 11)	-UU (Page 11)
	REGULATING	-UTR (Page 11)	-UUR (Page 11)
FAIL SAFE	SINGLE	-UO-FS1 (Page 7)	-UQ-FS1 (Page 8)
	DOUBLE	-UO-FS2 (Page 7)	-UQ-FS2 (Page 8)



Model 100G-UA



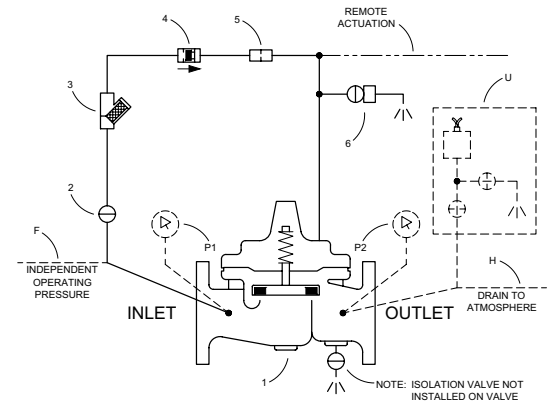
Hydraulically actuated on/off deluge valve designed for use in multiple applications.

Schematic Diagram

Item	Description
1	UL Listed Valve
2	Isolation Valve
3	Strainer
4	Check Valve
5	Restriction Assembly
6	Emergency Deluge Valve Release

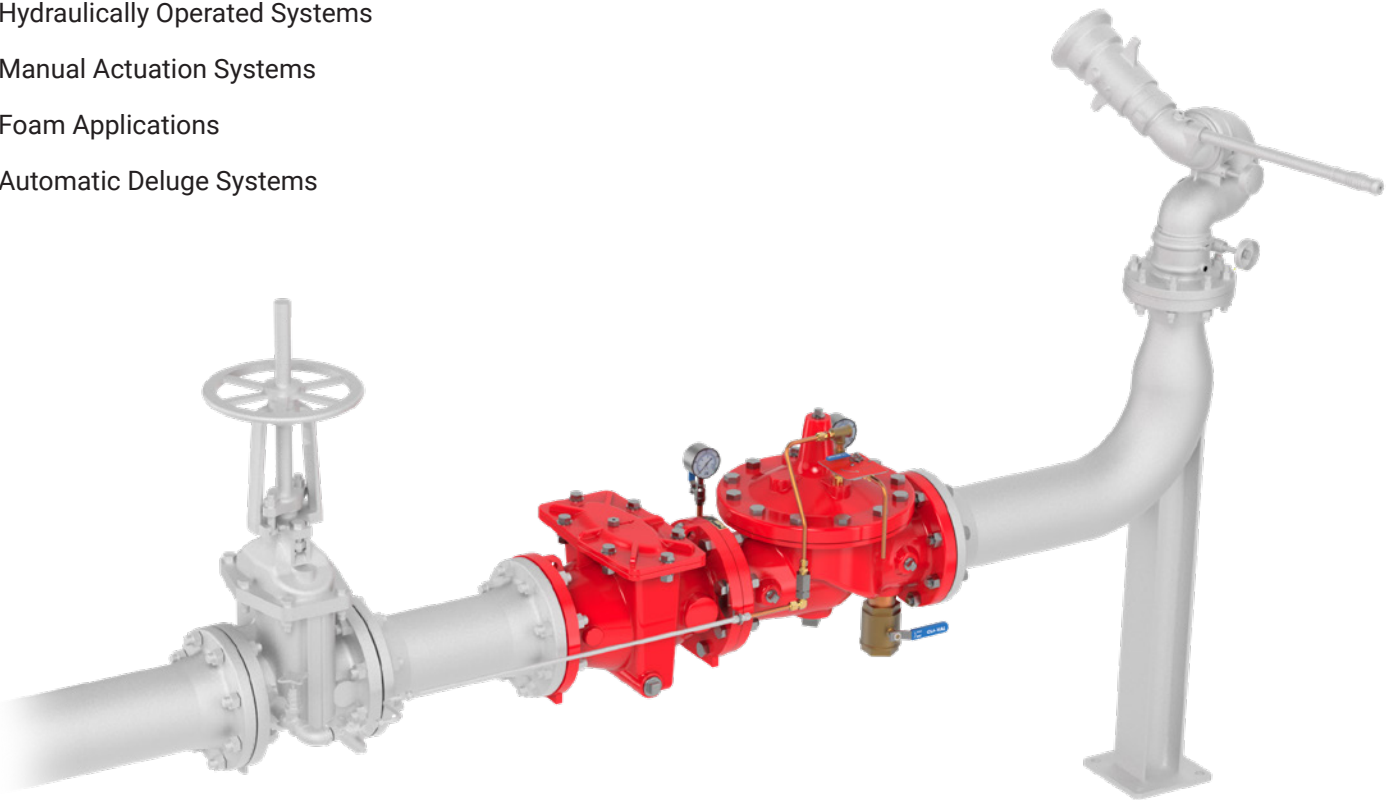
Optional Features

Item	Description
F	Independent Operating Pressure
H	Drain to Atmosphere
P	Pressure Gauge Assembly
U	Pressure Switch Assembly



Typical Applications

- Hydraulically Operated Systems
- Manual Actuation Systems
- Foam Applications
- Automatic Deluge Systems





Model 100G-UB



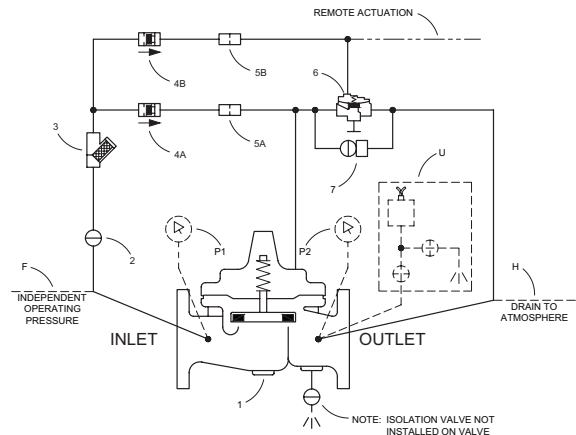
Hydraulically actuated on/off deluge valve designed for use in multiple applications.

Schematic Diagram

Item	Description
1	UL Listed Valve
2	Isolation Valve
3	Strainer
4	Check Valve
5	Restriction Assembly
6	Auxiliary Hytrol
7	Emergency Deluge Valve Release

Optional Features

Item	Description
F	Independent Operating Pressure
H	Drain to Atmosphere
P	Pressure Gauge Assembly
U	Pressure Switch Assembly



Model 100G-UBR



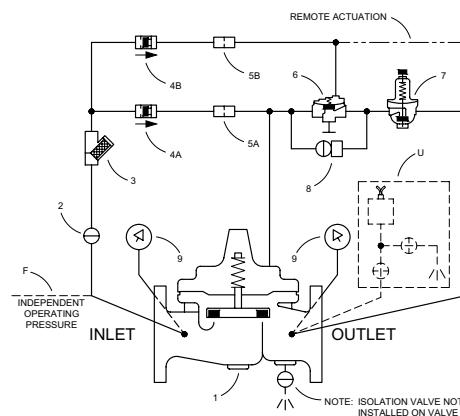
Hydraulically actuated on/off **regulating** deluge valve designed for use in multiple applications.

Schematic Diagram

Item	Description
1	UL Listed Valve
2	Isolation Valve
3	Strainer
4	Check Valve
5	Restriction Assembly
6	Auxiliary Hytrol (Rev. Flow)
7	Pressure Reducing Control
8	Emergency Deluge Valve Release
9	Pressure Gauge Assembly

Optional Features

Item	Description
F	Independent Operating Pressure
U	Pressure Switch Assembly



Model 100G-UBL



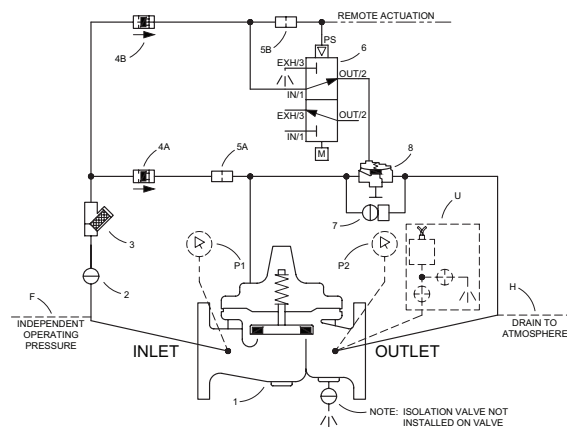
Hydraulically actuated on/off **latching** deluge valve designed for use in multiple applications.

Schematic Diagram

Item	Description
1	UL Listed Valve
2	Isolation Valve
3	Strainer
4	Check Valve
5	Restriction Assembly
6	Latching Deluge Pilot
7	Emergency Deluge Valve Release
8	Auxiliary Hytrol

Optional Features

Item	Description
F	Independent Operating Pressure
H	Drain to Atmosphere
P	Pressure Gauge Assembly
U	Pressure Switch Assembly



Model 100G-UBRL



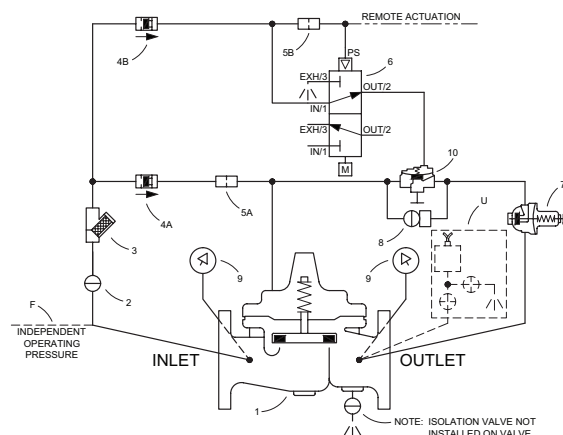
Hydraulically actuated on/off **regulating** deluge valve with **latching** pilot designed for use in multiple applications.

Schematic Diagram

Item	Description
1	UL Listed Valve
2	Isolation Valve
3	Strainer
4	Check Valve
5	Restriction Assembly
6	Latching Deluge Pilot
7	Pressure Reducing Control
8	Emergency Deluge Valve Release
9	Pressure Gauge Assembly
10	Auxiliary Hytrol (Rev. Flow)

Optional Features

Item	Description
F	Independent Operating Pressure
U	Pressure Switch Assembly





Model 100G-UC



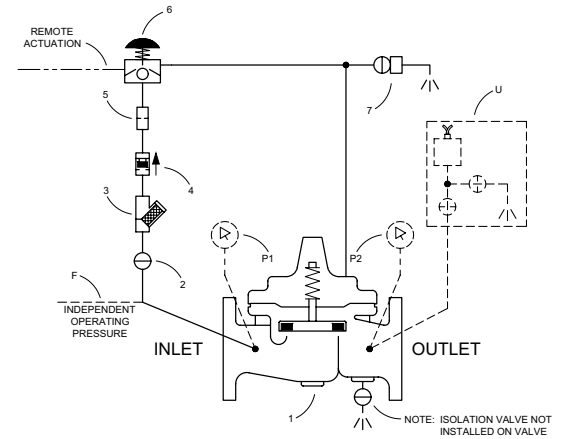
Hydraulically actuated on/off latching deluge valve designed for use in multiple applications.

Schematic Diagram

Item	Description
1	UL Listed Valve
2	Isolation Valve
3	Strainer
4	Check Valve
5	Restriction Assembly
6	Manual Reset Pilot
7	Emergency Deluge Valve Release

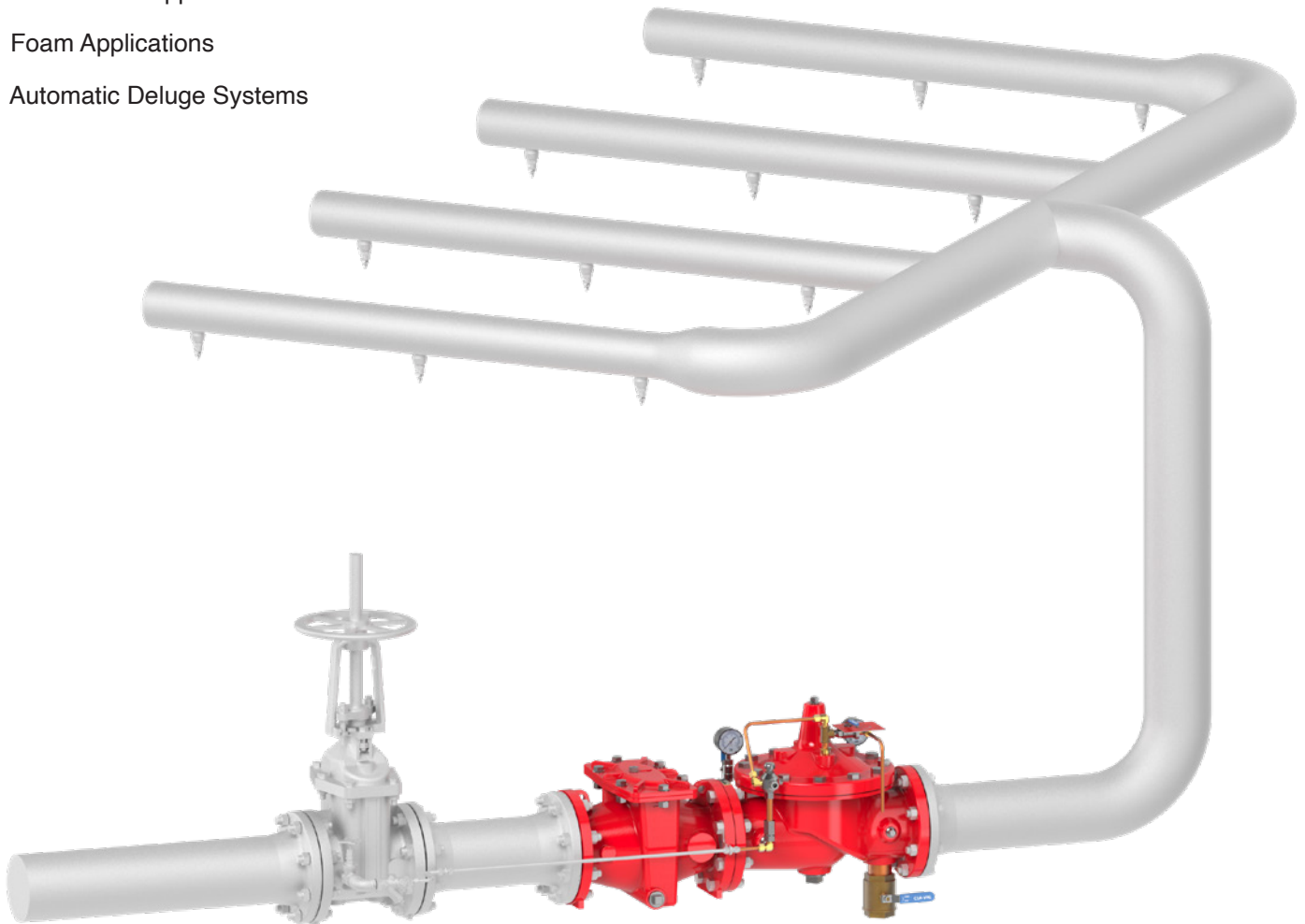
Optional Features

Item	Description
F	Independent Operating Pressure
P	Pressure Gauge Assembly
U	Pressure Switch Assembly



Typical Applications

- Hydraulically Operated Systems
- Local Reset Applications
- Foam Applications
- Automatic Deluge Systems





Model 100G-UD



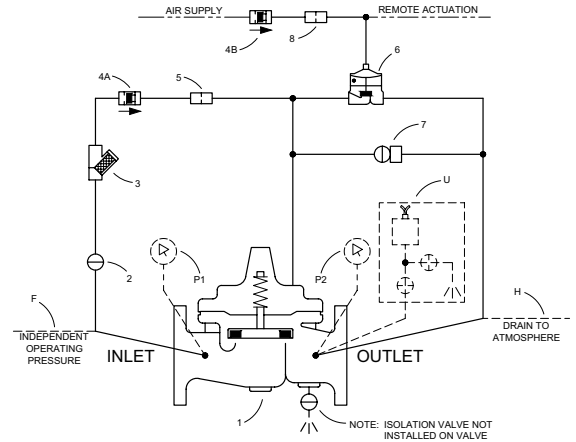
Pneumatically actuated on/off deluge valve designed for use in multiple applications.

Schematic Diagram

Item	Description
1	UL Listed Valve
2	Isolation Valve
3	Strainer
4	Check Valve
5	Restriction Assembly
6	Auxiliary Powerrol
7	Emergency Deluge Valve Release
8	Restriction Fitting

Optional Features

Item	Description
F	Independent Operating Pressure
H	Drain to Atmosphere
P	Pressure Gauge Assembly
U	Pressure Switch Assembly



Model 100G-UDR



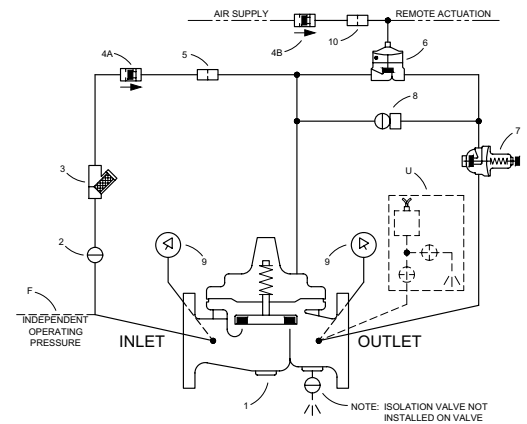
Pneumatically actuated on/off **regulating** deluge valve designed for use in multiple applications.

Schematic Diagram

Item	Description
1	UL Listed Valve
2	Isolation Valve
3	Strainer
4	Check Valve
5	Restriction Assembly
6	Auxiliary Powerrol
7	Pressure Reducing Control
8	Emergency Deluge Valve Release
9	Pressure Gauge Assembly
10	Restriction Fitting

Optional Features

Item	Description
F	Independent Operating Pressure
U	Pressure Switch Assembly



Model 100G-UDL



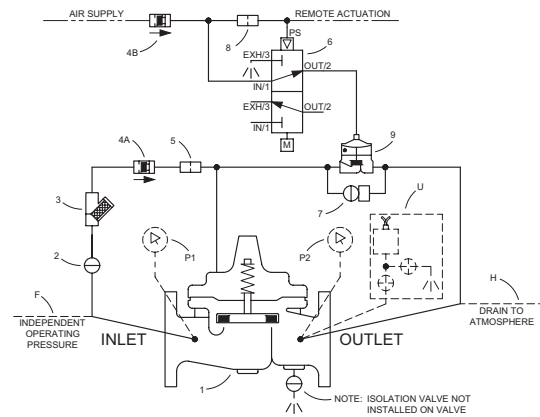
Pneumatically actuated on/off **latching** deluge valve designed for use in multiple applications.

Schematic Diagram

Item	Description
1	UL Listed Valve
2	Isolation Valve
3	Strainer
4	Check Valve
5	Restriction Assembly
6	Latching Deluge Pilot
7	Emergency Deluge Valve Release
8	Restriction Fitting
9	Auxiliary Powerrol

Optional Features

Item	Description
F	Independent Operating Pressure
H	Drain to Atmosphere
P	Pressure Gauge Assembly
U	Pressure Switch Assembly



Model 100G-UDRL



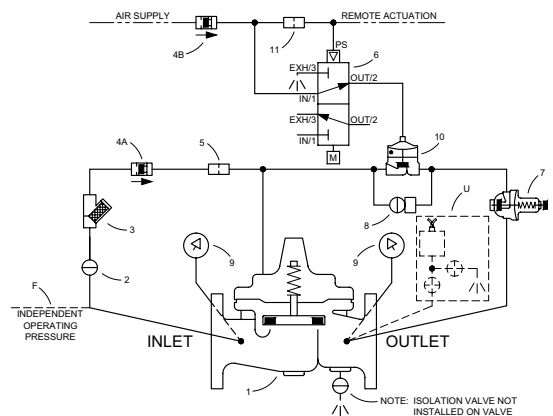
Pneumatically actuated on/off **regulating** deluge valve with **latching** pilot designed for use in multiple applications.

Schematic Diagram

Item	Description
1	UL Listed Valve
2	Isolation Valve
3	Strainer
4	Check Valve
5	Restriction Assembly
6	Latching Deluge Pilot
7	Pressure Reducing Control
8	Emergency Deluge Valve Release
9	Pressure Gauge Assembly
10	Auxiliary Powerrol
11	Restriction Fitting

Optional Features

Item	Description
F	Independent Operating Pressure
U	Pressure Switch Assembly





Model 100G-UO



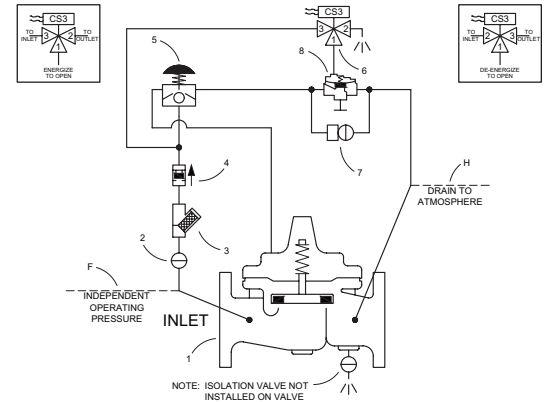
Electrically actuated hydraulic on/off deluge valve designed for use in multiple applications.

Schematic Diagram

Item	Description
1	UL Listed Valve
2	Isolation Valve
3	Strainer & Orifice Assembly
4	Check Valve
5	Manual Reset Pilot
6	Solenoid Control
7	Emergency Deluge Valve Release
8	Auxiliary Hytrol

Optional Features

Item	Description
F	Independent Operating Pressure
H	Drain to Atmosphere



FAILSAFE OPTIONS

Model 100G-UO-FS1



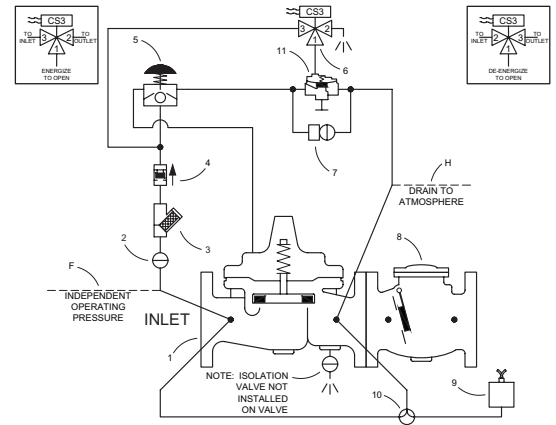
Single Fail Safe electrically actuated on/off deluge valve designed for use in multiple applications.

Schematic Diagram

Item	Description
1	UL Listed Valve
2	Isolation Valve
3	Strainer
4	Check Valve
5	Manual Reset Pilot
6	Solenoid Control
7	Emergency Deluge Valve Release
8	Swing Check
9	Pressure Switch
10	CK3 Cock
11	Auxiliary Hytrol

Optional Features

Item	Description
F	Independent Operating Pressure
H	Drain to Atmosphere



Model 100G-UO-FS2



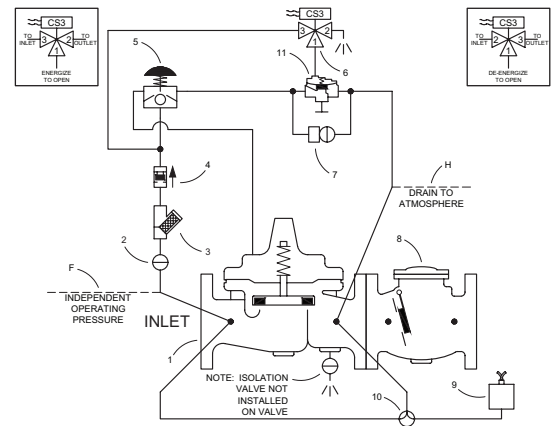
Double Fail Safe electrically actuated on/off deluge valve designed for use in multiple applications.

Schematic Diagram

Item	Description
1	UL Listed Valve
2	Isolation Valve
3	Strainer
4	Check Valve
5	Manual Reset Pilot
6	Solenoid Control
7	Emergency Deluge Valve Release
8	Swing Check
9	Pressure Switch
10	CK3 Cock
11	Auxiliary Hytrol

Optional Features

Item	Description
F	Independent Operating Pressure
H	Drain to Atmosphere





Model 100G-UQ



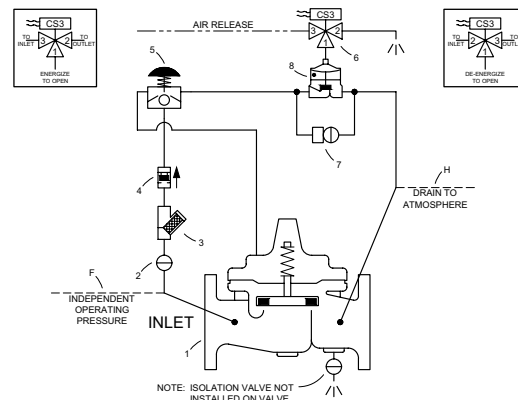
Electrically actuated pneumatic on/off deluge valve designed for use in multiple applications.

Schematic Diagram

Item	Description
1	UL Listed Valve
2	Isolation Valve
3	Strainer & Orifice Assembly
4	Check Valve
5	Manual Reset Pilot
6	Solenoid Control
7	Emergency Deluge Valve Release
8	Auxiliary Powertrol

Optional Features

Item	Description
F	Independent Operating Pressure
H	Drain to Atmosphere



FAILSAFE OPTIONS

Model 100G-UQ-FS1



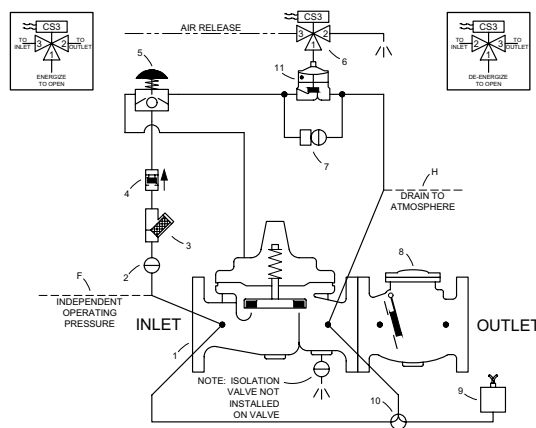
Single Fail Safe electrically actuated on/off deluge valve designed for use in multiple applications.

Schematic Diagram

Item	Description
1	UL Listed Valve
2	Isolation Valve
3	Strainer
4	Check Valve
5	Manual Reset Pilot
6	Solenoid Control
7	Emergency Deluge Valve Release
8	Swing Check
9	Pressure Switch
10	CK3 Cock
11	Auxiliary Powertrol

Optional Features

Item	Description
F	Independent Operating Pressure
H	Drain to Atmosphere



Model 100G-UQ-FS2



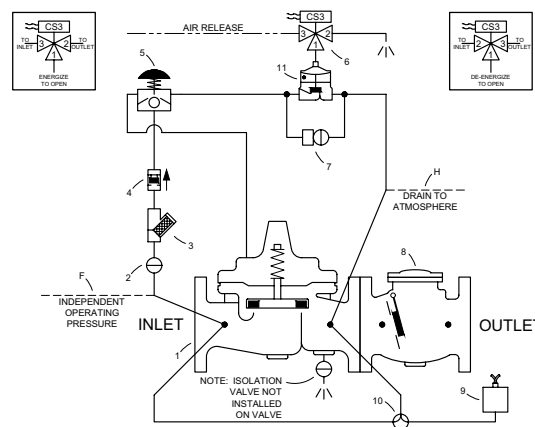
Double Fail Safe electrically actuated on/off deluge valve designed for use in multiple applications.

Schematic Diagram

Item	Description
1	UL Listed Valve
2	Isolation Valve
3	Strainer
4	Check Valve
5	Manual Reset Pilot
6	Solenoid Control
7	Emergency Deluge Valve Release
8	Swing Check
9	Pressure Switch
10	CK3 Cock
11	Auxiliary Powertrol

Optional Features

Item	Description
F	Independent Operating Pressure
H	Drain to Atmosphere





Model 100G-UP



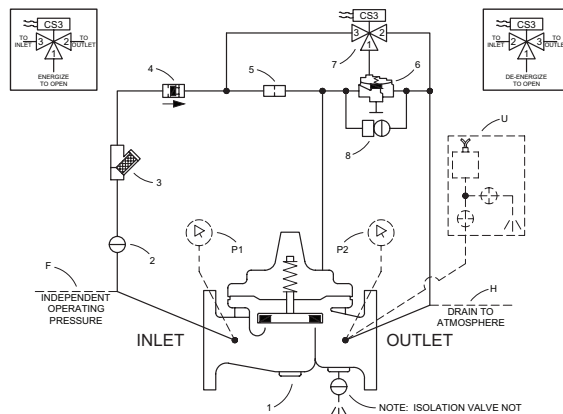
Electrically actuated hydraulic on/off deluge valve designed for use in multiple applications.

Schematic Diagram

Item	Description
1	UL Listed Valve
2	Isolation Valve
3	"Y" Strainer
4	Check Valve
5	Restriction Fitting
6	Auxiliary Hytrol
7	Solenoid Control
8	Emergency Deluge Valve Release

Optional Features

Item	Description
F	Independent Operating Pressure
H	Drain to Atmosphere
P	Pressure Gauge Assembly
U	Pressure Switch Assembly



Model 100G-UPR



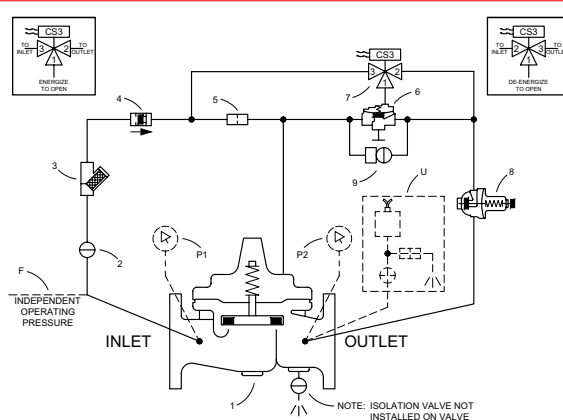
Electrically actuated hydraulic on/off regulating deluge valve designed for use in multiple applications.

Schematic Diagram

Item	Description
1	UL Listed Valve
2	Isolation Valve
3	"Y" Strainer
4	Check Valve
5	Restriction Fitting
6	Auxiliary Hytrol (Rev. Flow)
7	Solenoid Control
8	Pressure Reducing Control
9	Emergency Deluge Valve Release

Optional Features

Item	Description
F	Independent Operating Pressure
P	Pressure Gauge Assembly
U	Pressure Switch Assembly



Model 100G-UPL



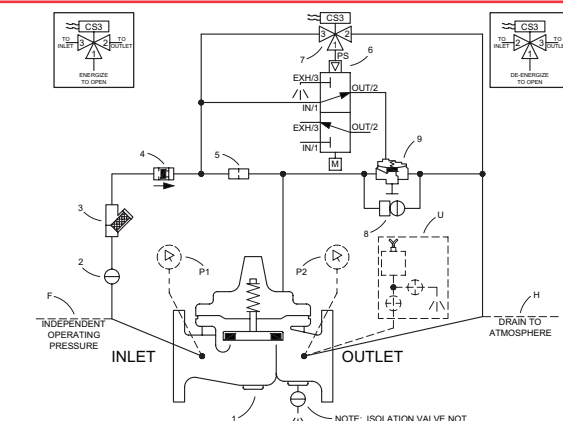
Electro hydraulic actuated on/off latching deluge valve designed for use in multiple applications.

Schematic Diagram

Item	Description
1	UL Listed Valve
2	Isolation Valve
3	"Y" Strainer
4	Check Valve
5	Restriction Fitting
6	Latching Deluge Pilot
7	Solenoid Control
8	Emergency Deluge Valve Release
9	Auxiliary Hytrol

Optional Features

Item	Description
F	Independent Operating Pressure
H	Drain to Atmosphere
P	Pressure Gauge Assembly
U	Pressure Switch Assembly



Model 100G-UPRL



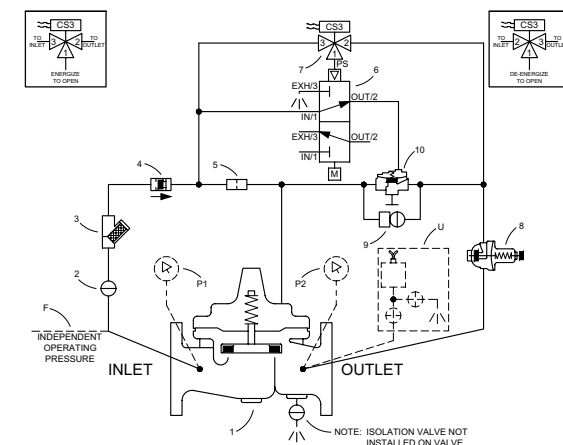
Electrically actuated hydraulic on/off regulating deluge valve with latching pilot designed for use in multiple applications.

Schematic Diagram

Item	Description
1	UL Listed Valve
2	Isolation Valve
3	"Y" Strainer
4	Check Valve
5	Restriction Fitting
6	Latching Deluge Pilot
7	Solenoid Control
8	Pressure Reducing Control
9	Emergency Deluge Valve Release
10	Auxiliary Hytrol (Rev. Flow)

Optional Features

Item	Description
F	Independent Operating Pressure
P	Pressure Gauge Assembly
U	Pressure Switch Assembly





Model 100G-UR



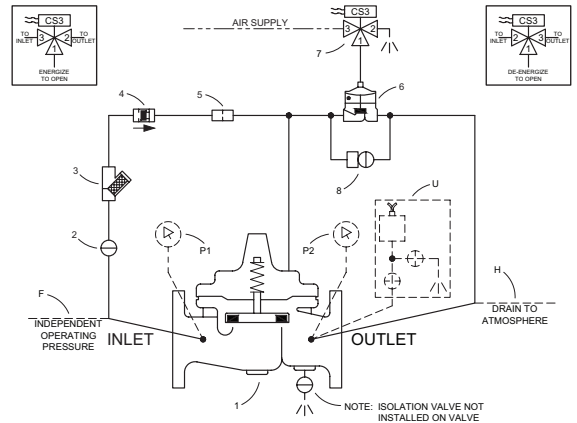
Electrically actuated pneumatic on/off deluge valve designed for use in multiple applications.

Schematic Diagram

Item	Description
1	UL Listed Valve
2	Isolation Valve
3	"Y" Strainer
4	Check Valve
5	Restriction Assembly
6	Auxiliary Powerrol
7	Solenoid Control
8	Emergency Deluge Valve Release

Optional Features

Item	Description
F	Independent Operating Pressure
H	Drain to Atmosphere
P	Pressure Gauge Assembly
U	Pressure Switch Assembly



Model 100G-URR



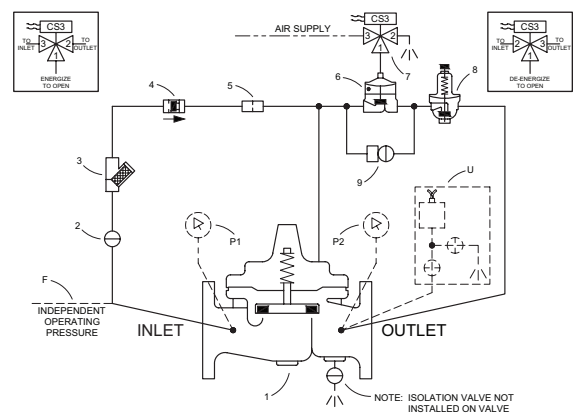
Electrically actuated pneumatic on/off **regulating** deluge valve designed for use in multiple applications.

Schematic Diagram

Item	Description
1	UL Listed Valve
2	Isolation Valve
3	"Y" Strainer
4	Check Valve
5	Restriction Assembly
6	Auxiliary Powerrol
7	Solenoid Control
8	Pressure Reducing Control
9	Emergency Deluge Valve Release

Optional Features

Item	Description
F	Independent Operating Pressure
P	Pressure Gauge Assembly
U	Pressure Switch Assembly



Model 100G-URL



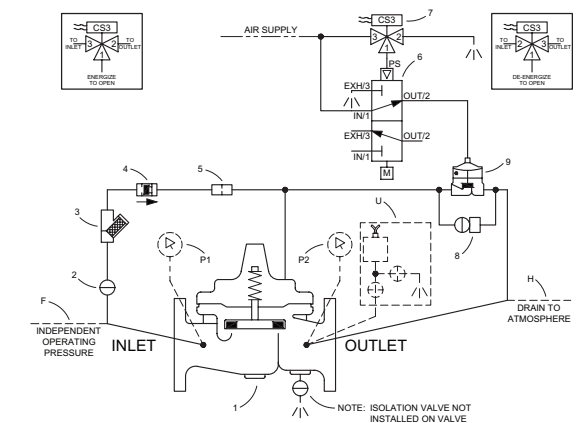
Electrically actuated pneumatic on/off **latching** deluge valve designed for use in multiple applications.

Schematic Diagram

Item	Description
1	UL Listed Valve
2	Isolation Valve
3	"Y" Strainer
4	Check Valve
5	Restriction Assembly
6	Latching Deluge Pilot
7	Solenoid Control
8	Emergency Deluge Valve Release
9	Auxiliary Powerrol

Optional Features

Item	Description
F	Independent Operating Pressure
H	Drain to Atmosphere
P	Pressure Gauge Assembly
U	Pressure Switch Assembly



Model 100G-URRL



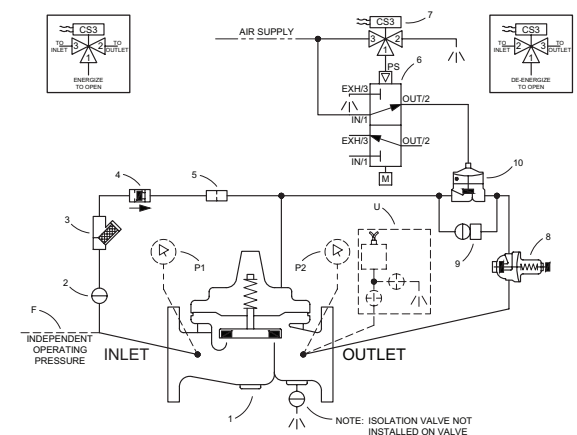
Electrically actuated pneumatic on/off **regulating** deluge valve with **latching** pilot designed for use in multiple applications.

Schematic Diagram

Item	Description
1	UL Listed Valve
2	Isolation Valve
3	"Y" Strainer
4	Check Valve
5	Restriction Assembly
6	Latching Deluge Pilot
7	Solenoid Control
8	Pressure Reducing Control
9	Emergency Deluge Valve Release
10	Auxiliary Powerrol

Optional Features

Item	Description
F	Independent Operating Pressure
P	Pressure Gauge Assembly
U	Pressure Switch Assembly





Model 100G-UT



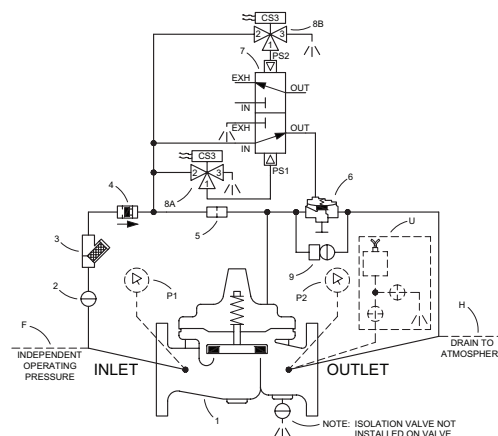
Electrically actuated hydraulic on/off deluge valve with fail last position pilot designed for use in multiple applications.

Schematic Diagram

Item	Description
1	UL Listed Valve
2	Isolation Valve
3	Strainer
4	Check Valve
5	Restriction Assembly
6	Auxiliary Hytrol
7	Latching Deluge Pilot, Fail Last Position
8	Solenoid Control
9	Emergency Deluge Valve Release

Optional Features

Item	Description
F	Independent Operating Pressure
H	Drain to Atmosphere
P	Pressure Gauge Assembly
U	Pressure Switch Assembly



Model 100G-UTR



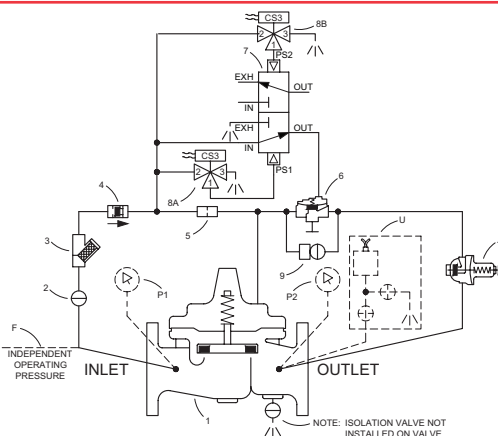
Electrically actuated hydraulic on/off regulating deluge valve with fail last position pilot designed for use in multiple applications.

Schematic Diagram

Item	Description
1	UL Listed Valve
2	Isolation Valve
3	Strainer
4	Check Valve
5	Restriction Assembly
6	Auxiliary Hytrol (Rev. Flow)
7	Latching Deluge Pilot, Fail Last Position
8	Solenoid Control
9	Emergency Deluge Valve Release
10	Pressure Reducing Control

Optional Features

Item	Description
F	Independent Operating Pressure
P	Pressure Gauge Assembly
U	Pressure Switch Assembly



Model 100G-UU



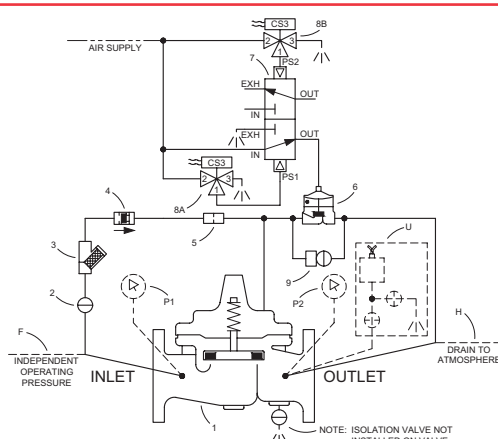
Electrically actuated pneumatic on/off deluge valve with fail last position pilot designed for use in multiple applications.

Schematic Diagram

Item	Description
1	UL Listed Valve
2	Isolation Valve
3	Strainer
4	Check Valve
5	Restriction Assembly
6	Auxiliary Powertrol
7	Latching Deluge Pilot, Fail Last Position
8	Solenoid Control
9	Emergency Deluge Valve Release

Optional Features

Item	Description
F	Independent Operating Pressure
H	Drain to Atmosphere
P	Pressure Gauge Assembly
U	Pressure Switch Assembly



Model 100G-UUR



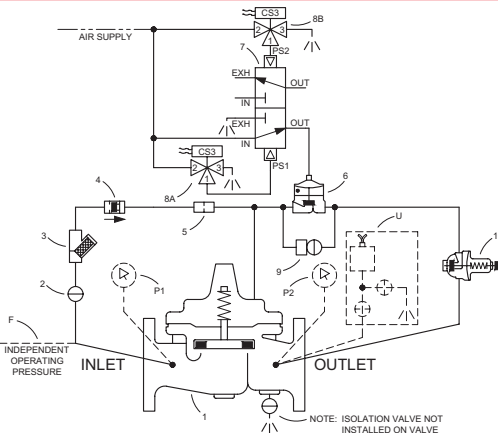
Electrically actuated pneumatic on/off regulating deluge valve with fail last position pilot designed for use in multiple applications.

Schematic Diagram

Item	Description
1	UL Listed Valve
2	Isolation Valve
3	Strainer
4	Check Valve
5	Restriction Assembly
6	Auxiliary Powertrol
7	Latching Deluge Pilot, Fail Last Position
8	Solenoid Control
9	Emergency Deluge Valve Release
10	Pressure Reducing Control

Optional Features

Item	Description
F	Independent Operating Pressure
P	Pressure Gauge Assembly
U	Pressure Switch Assembly



Support doesn't stop at the sale.

Cla-Val Field Service is there when you need it, backed by more than 85 years of valve design and manufacturing experience.

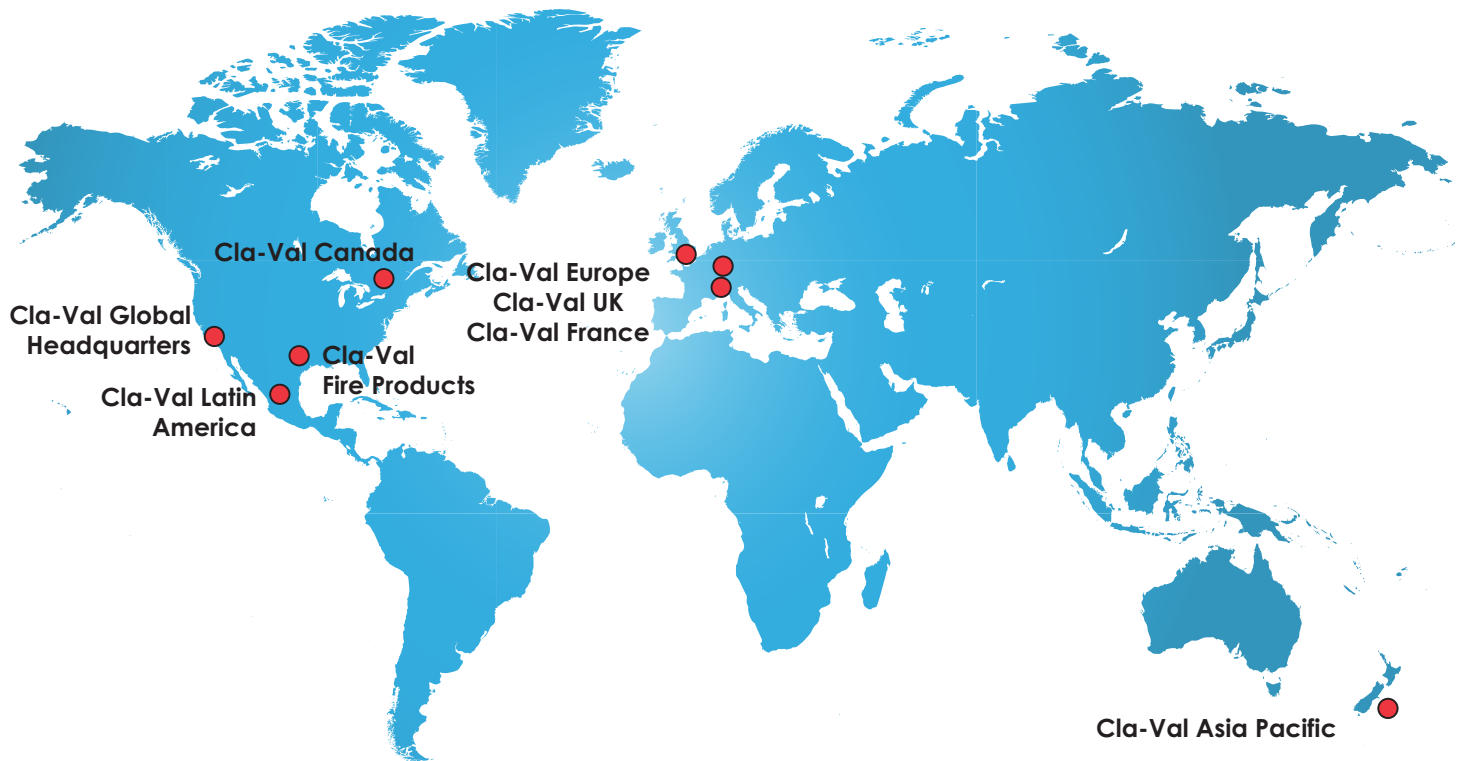
Cla-Val Field Service provides expert, on-site maintenance and repair services for valves installed in waterworks, wastewater, fire protection systems, aviation fueling, marine and industrial applications throughout the US, backed by dedicated sales representatives ready to answer any and all questions.

Our experienced Field Service Technicians can help you with:

- Start-up assistance
- Troubleshooting
- Periodic maintenance
- Valve repairs
- Field retrofits



We also have Regional Cla-Val Service Centers in the Southern California, Northern California, Arizona, Texas and New York. Outside those areas, factory authorized sales agents throughout North America offer similar field services to ensure that a solution to your operational challenges is never more than a phone call away.



Global Headquarters

1701 Placentia Avenue
Costa Mesa, CA 92627
949.722.4800
800.942.6326
info@cla-val.com
cla-val.com



Cla-Val Europe

Chemin Des Mesanges 1
CH-1032 Romanel/Lausanne
Switzerland
41-21-643-15-55
cla-val@cla-val.ch

Fire Products

907 S. Friendswood Dr, Ste.
203 Friendswood, TX 77546
281.741.4198
info@cla-val.com
cla-val.com/fire-protection