

1 X35 Firmware Update

1.1.1 Firmware Version

To update the X35 firmware, you will need to check which firmware is currently installed to X35 and if an update is necessary, to access the current firmware version on X35 navigate via: Setup > Factory Reset > bottom of the page will show the current firmware that's installed on X35, as shown in figure 4.37.

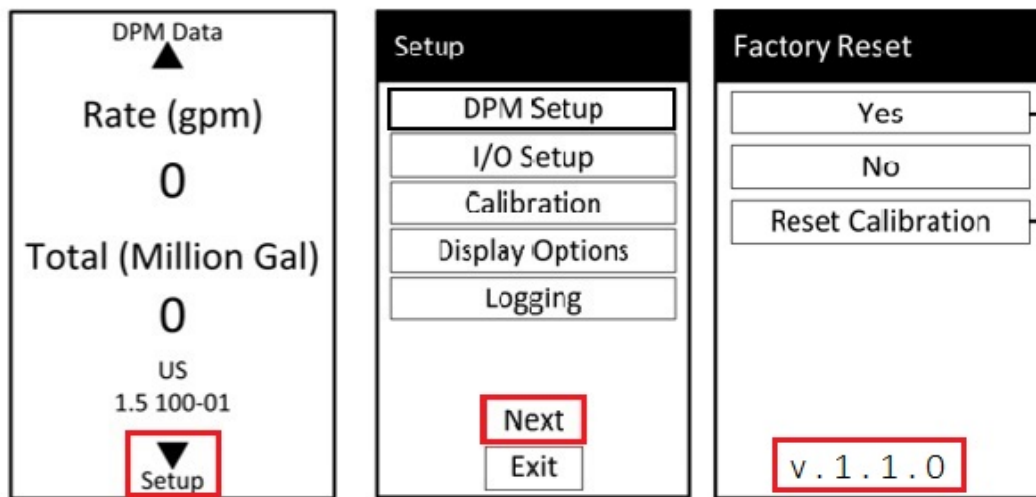


Figure 4.37

1.1.2 Firmware Download

To be able to download the latest firmware for X35, visit www.cla-val.com, clicking on resources and accessing software and driver library as shown in figure 4.38.

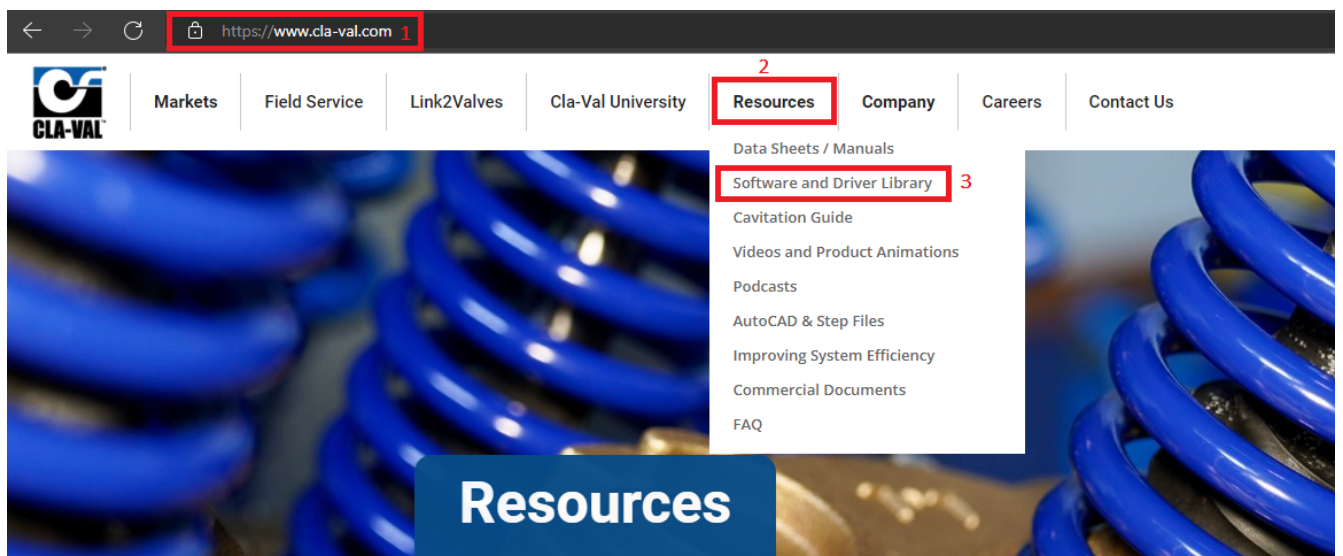


Figure 4.38


After accessing the software and driver library, choose X35 firmware and download file by clicking on the desired firmware, one click should automatically download file into Computer, as shown in figure below:

Software and Driver Library

Control. Power. Information. Communication.

Cla-Val electronic products are delivered pre-programmed and ready to use. If different operating parameters are desired, firmware and software for each product is available for free download here.

The software driver for e-product cables is also available for free download.




**Driver Software for all
Cla-Val eProduct USB Cables**

Driver Software for Win XP/Vista/ Win 7:
(32 bit) ([Multi-USB_V1.36_X32.exe](#))


Driver Software for Win 7:
(64 bit) ([Multi-USB_V1.37_X64.exe](#))

Windows 10 Driver:
([Multi-USB_V1.39_X64_WIN10.exe](#))



**X35
Flow Calculation Module**

Firmware:
([v.1.1.0](#))
([v.1.1.1](#))



**X143IP
Intermediate Power Generator**

Firmware:
([e-PowerIP208.hex](#))

Software:
([e-PowerIP_V2.1.2.exe](#))

Figure 4.39

1.1.3 SD Card Removal

Note: Power must be disconnected prior to removing SD card from X35, and power must be off when inserting SD card to X35.

Once power has been disconnected, follow the steps below to remove the SD card:

1. Push the SD card in and release to eject.

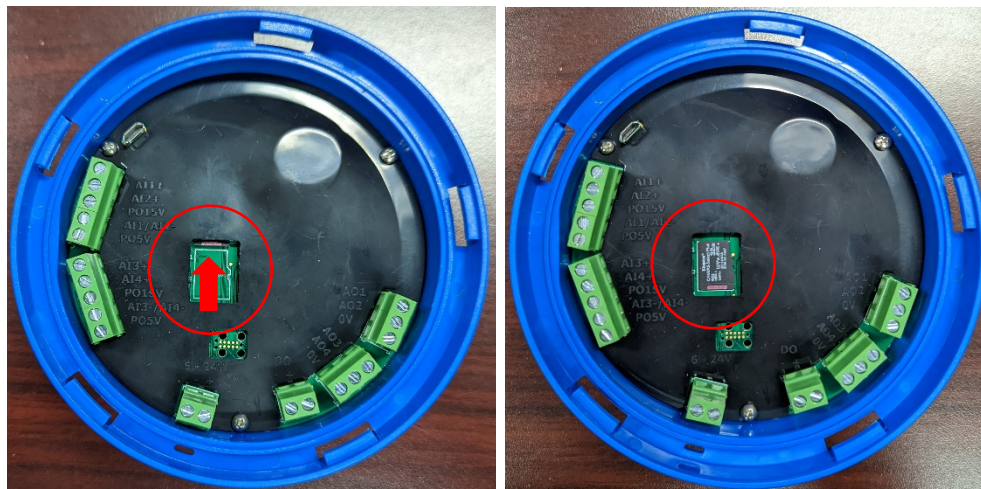


Figure 1.40

2. Use your finger to slide the SD card into the middle of the opening, as shown above, before trying to remove.
3. Either *carefully* pick up the SD card, ensuring it does not fall under the black plastic cover, **OR** **more easily**, hold the SD card against the board with your finger and then flip the module over and remove your finger. SD card should be on top of finger.



Figure 1.41

1.1.4 Firmware Update

To update the X35 firmware, you will need access to a MicroSD card inserted in the back of the X35.

1. Insert the SD card into your PC and locate the Root directory shown in **figure 4.42**.
2. Move the file that you received or downloaded which is in a ".zip Format" into the "dist" folder.
WARNING – DO NOT Modify or delete any other files/folders!
3. After the ".zip file" move is complete, safely remove the SD card from PC and insert back into the X35. When you connect power back to the module, the firmware update will begin on startup as shown in figure 4.43.

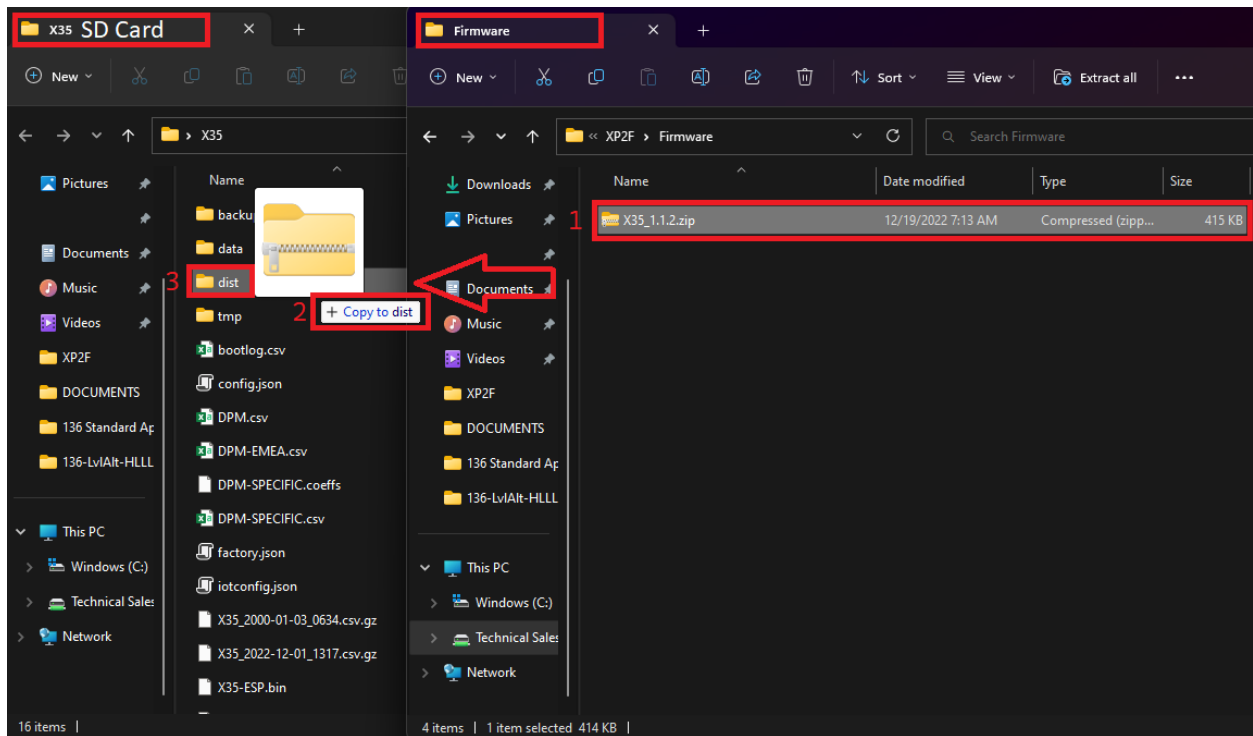


Figure 4.42

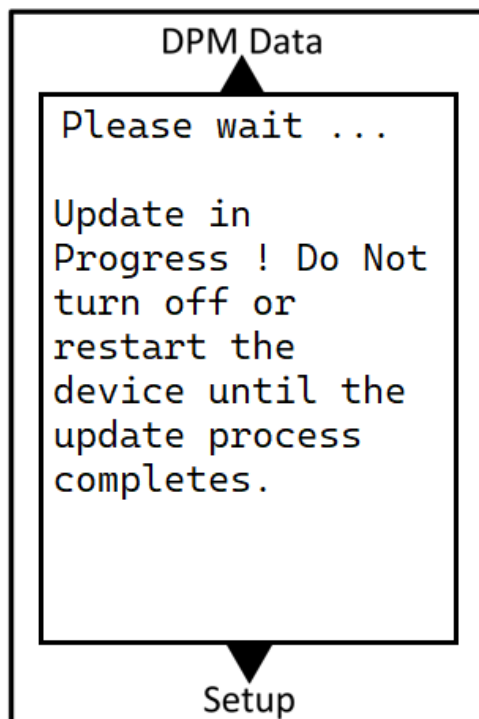


Figure 4.43

1.1.5 Firmware Malfunction

Firmware Malfunctions can occur and its always something to be prepared for, such common causes of malfunction can happen because of SD card malfunction which can happen if SD Card is disconnected while X35 is still in power, corrupt SD Card, or even an uncomplete transfer of new Firmware to SD Card.

Identifying a Malfunction is the first step towards restoring a proper Firmware, a Firmware Malfunction could be a non-powering X35 after update is being installed, or incomplete process configuring the valve specifications and not loading the correct data for a specific valve.

If in any case a Malfunction occurs and X35 is not loading Correct data, incomplete bootup, steps below should solve this matter:

1. Disconnect SD card from X35 and insert into PC and start by having a complete format to SD card as shown in figure 4.44.

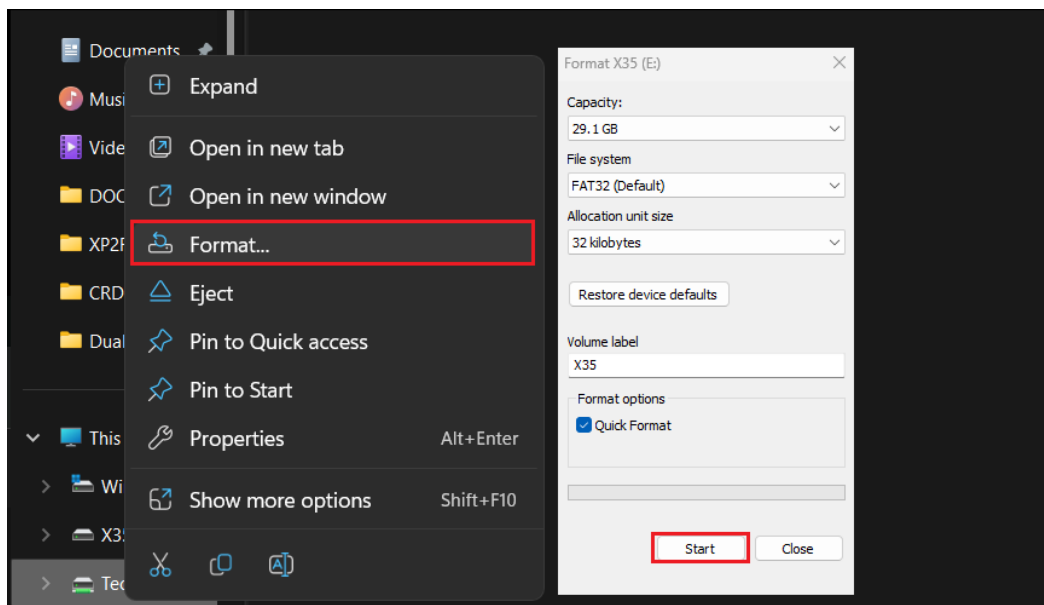


Figure 4.44

2. Copy the existing or new firmware internal files into SD card as shown in figure 4.45.

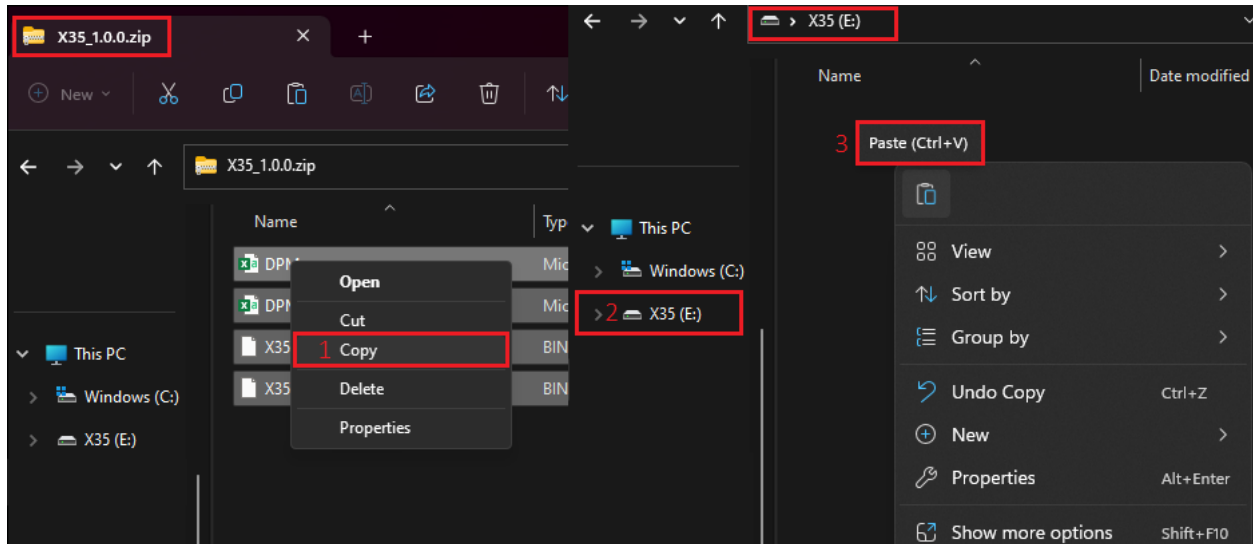


Figure 4.45

3. After the copy is complete, safely remove the SD card from PC and insert back into the X35. When you connect power back to the module, the firmware update will begin on startup.

Note: Do not power off or restart device during update process.