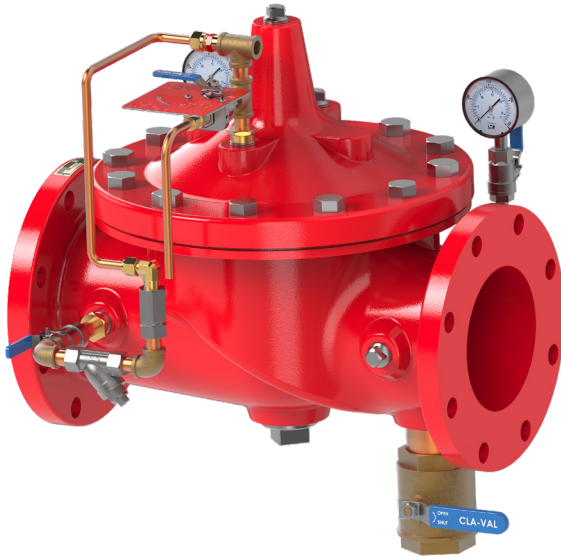




Model **100G-UA**

## Local/Remote Release Deluge Valve



### Description

The Cla-Val Model 100G-UA is a hydraulically actuated on/off deluge valve designed for use in multiple applications.

The 100G-UA can be actuated locally by relieving cover pressure through our EDVR (Emergency Deluge Valve Release) or remotely based on customer design.

### Main Valve Features

- Dual Guided Stem Internal for Consistent Linear Seating
- Tapered Metal Seat for Drip Tight Shut-off
- Replaceable 316 Stainless Steel Seat
- Single Internal Guided Assembly
- Proven Repeat Functionality in Harsh Conditions
- In-Line Maintenance

### Optional UL Features

- X101 Valve Position Indicator
- X141 Pressure Gauges
- Pressure Switch Assembly
- X105 Limit Switch

### Listings and Approvals

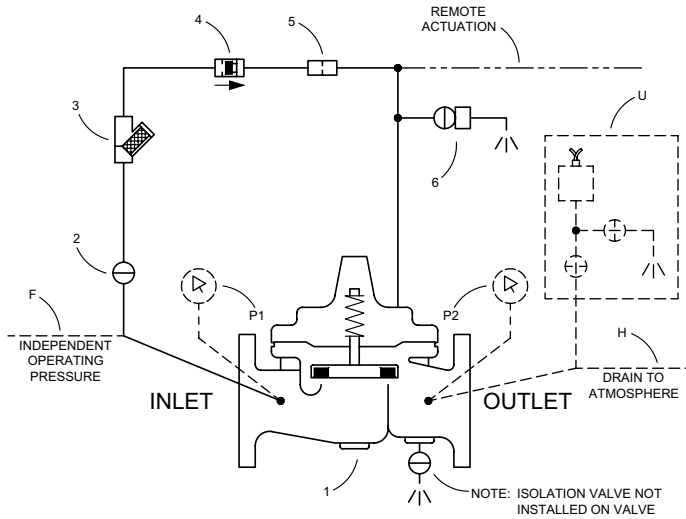


### Actuation Method

- EDVR Manual Release
- Remote Hydraulic Actuation

### Typical Applications

- Hydraulically Operated Systems
- Manual Actuation Systems
- Foam Applications
- Automatic Deluge Systems



**Schematic Diagram**

Item	Description
1	UL Listed Valve
2	Isolation Valve
3	Strainer
4	Check Valve
5	Restriction Assembly
6	Emergency Deluge Valve Release

**Optional Features**

Item	Description
F	Independent Operating Pressure
H	Drain to Atmosphere
P	Pressure Gauge Assembly
U	Pressure Switch Assembly

Cla-Val Model 100G-UA is a hydraulically actuated on/off deluge valve that opens or closes via local or remote actuation.

**Closed Position:** Supply pressure is applied through our Main Valve (1) Inlet Port or Independent Supply Line (F). The supply pressure will pass through our inlet isolation ball valve (2), strainer (3), check valve (4) and restriction orifice (5) before being applied to our Main Valve (1) Cover.

**Open Position:** Main Valve (1) Cover pressure is released through our EDVR (6) which consists of a quarter turn ball valve or via remote actuation per customer design.

**Note: For seawater applications use 100GS/2100GS main valve**

**Main Valve Specifications**

**UL APPROVED SIZES**

- Globe: 3" - 12" flanged
- Globe: 3" - 8" grooved
- Angle: 3" - 12" flanged

**PRESSURE RATINGS**

- 150 class, 250 psi maximum (Ductile Iron)
- 150 class, 285 psi maximum (All other materials)
- 300 class, 300 psi maximum (All materials)

**TEMPERATURE RANGE**

Water: to 180° F. Max

**FLUIDS**

Air, water, light oils

**Materials**

**Main valve body & cover:**

Standard Epoxy Coated Ductile Iron  
ASTM A-536\*

**Main valve trim:**

Stainless Steel

**Pilot control system:**

Cast Bronze

**Rubber Parts:**

Buna-N® Synthetic Rubber

**Optional UL Listed Materials for Seawater and Severe Service Applications:**

- **Nickel Aluminum Bronze (NAB)**  
ASTM B148 Alloy C95800
- **Monel - QQ-N-288 Comp B**  
ASTM A494 Grade M30H
- **Cast Steel**  
ASTM A216 Grade WCB
- **316 Stainless Steel**  
ASTM A743 Grades CF3M and CFM8
- **Super Austenitic Stainless Steel**  
ASTM A351 Grade CK3MCuN (SMO 254)
- **Super Duplex Stainless Steel** ASTM A890 Grade 5A (CE3MN)

**Functional Data**

Valve Size	Inches	3	4	6	8	10	12	
	mm	80	100	150	200	250	300	
C <sub>v</sub> Factor	<b>Globe Pattern</b>	Gal./Min. (gpm)	115	200	440	770	1245	1725
		Litres/Sec. (l/s)	27.6	48	105.6	184.8	299	414
	<b>Angle Pattern</b>	Gal./Min. (gpm)	139	240	541	990	1575	2500*
		Litres/Sec. (l/s)	33.4	58	130	238	378	600

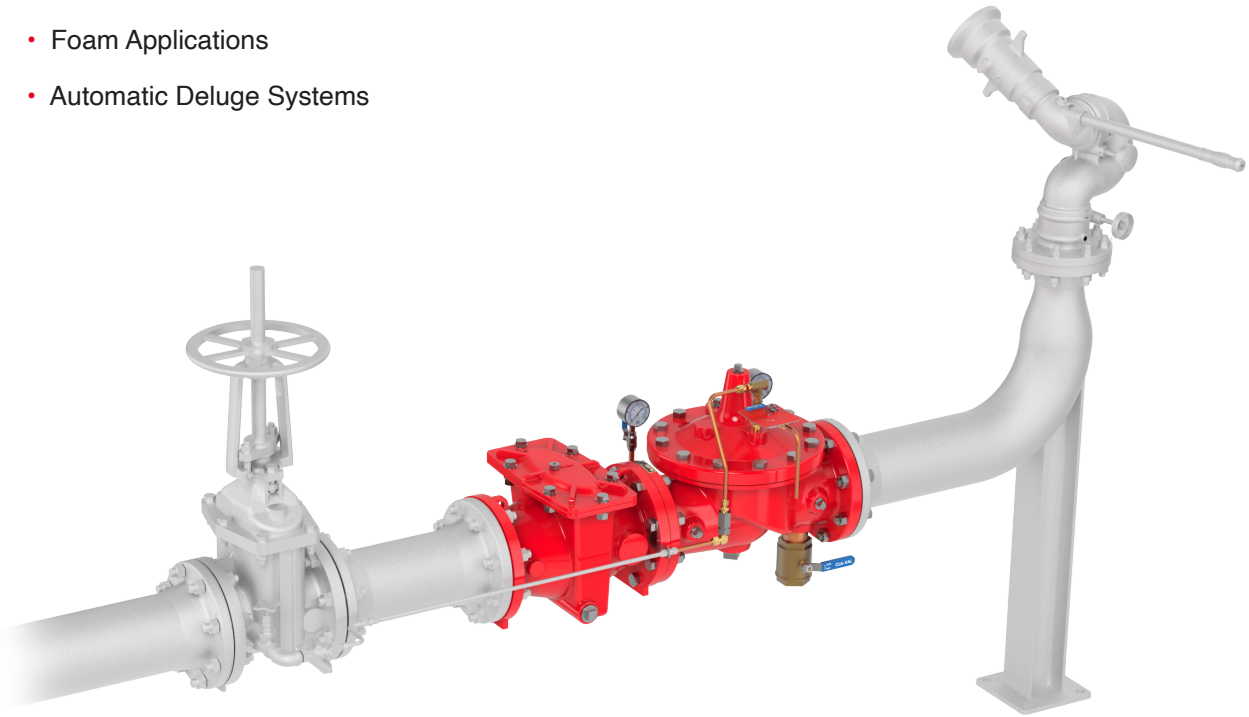


Model **100G-UA**

## Local/Remote Release Deluge Valve

### Typical Applications

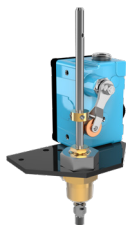
- Hydraulically Operated Systems
- Manual Actuation Systems
- Foam Applications
- Automatic Deluge Systems



### Optional Features



Position Indicator



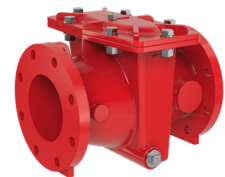
Limit Switch



Pressure Switch



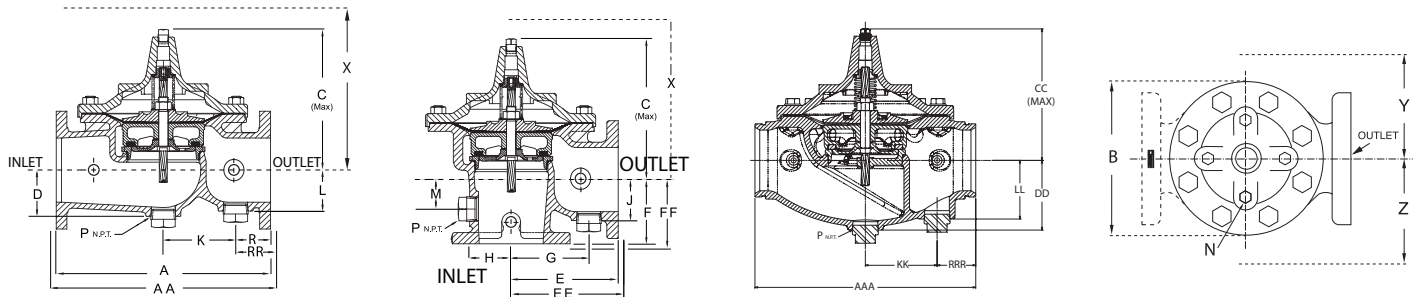
Pressure Gauge



Strainer  
*(Not UL Listed)*



**Dimensions**

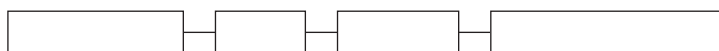


Unit	inches	mm	inches	mm	inches	mm	inches	mm	inches	mm	inches	mm
<b>Valve Size</b>	<b>3</b>	<b>80</b>	<b>4</b>	<b>100</b>	<b>6</b>	<b>150</b>	<b>8</b>	<b>200</b>	<b>10</b>	<b>250</b>	<b>12</b>	<b>300</b>
<b>A 150 ANSI</b>	12.00	305	15.00	381	20.00	508	25.38	645	29.75	756	34.00	864
<b>AA 300 ANSI</b>	13.25	337	15.62	397	21.00	533	26.38	670	31.12	791	35.50	902
<b>AAA Grooved</b>	12.50	318	15.00	381	20.00	508	25.38	645	—	—	—	—
<b>B Dia.</b>	9.12	232	11.50	292	15.75	400	20.00	508	23.62	600	28.00	711
<b>C Max.</b>	8.19	208	10.62	270	13.38	340	16.00	406	17.12	435	21.00	533
<b>CC Max.</b>	7.50	191	9.94	252	12.13	308	15.00	381	—	—	—	—
<b>D</b>	2.56	65	3.19	81	4.31	110	5.16	131	8.50	216	9.39	239
<b>DD</b>	3.62	92	4.50	114	6.31	160	7.81	198	—	—	—	—
<b>E 150 ANSI</b>	7.00	178	8.50	216	10.00	254	12.69	322	14.88	378	17.00	432
<b>EE 300 ANSI</b>	—	—	8.81	224	10.50	267	13.19	350	—	—	17.75	451
<b>F 150 ANSI</b>	4.00	102	4.97	126	6.00	152	8.00	203	8.62	219	13.75	349
<b>FF 300 ANSI</b>	—	—	5.28	134	6.50	165	8.50	216	—	—	14.50	368
<b>L</b>	2.56	65	2.81	71	3.81	97	4.81	122	8.50	216	9.39	239
<b>LL</b>	3.25	83	4.00	102	5.31	135	7.00	178	—	—	—	—
<b>P NPT</b>	1-1/4 - 11-1/2		2 - 11-1/2		2 - 11-1/2		2 - 11-1/2		2 - 11-1/2		2 - 11-1/2	
<b>R 150 ANSI</b>	2.50	64	3.47	88	3.25	83	4.19	106	7.12	181	6.50	165
<b>RR 300 ANSI</b>	3.12	79	3.78	96	3.75	95	4.69	119	7.81	198	7.25	184
<b>RRR Grooved</b>	2.75	70	2.94	75	3.50	89	5.69	145	—	—	—	—
<b>X Pilot System</b>	15.00	381	17.00	432	29.00	737	31.00	787	33.00	838	35.00	889
<b>Y Pilot System</b>	11.00	279	12.00	305	20.00	508	22.00	559	24.00	610	26.00	660
<b>Z Pilot System</b>	11.00	279	12.00	305	20.00	508	22.00	559	24.00	610	26.00	660

**Model Number Codes**



Size	Main Valve	Service	Trim	Body	Trim	Pilots	Tubing & Fittings	Elastomer	Flange	Face
3"	100 Globe	G Firewater		D Ductile Iron	S Stainless Steel	B Bronze w/SST	B Copper with Brass Fittings	B Buna	ANSI 150#	RF
4"	2100 Angle	GS Seawater		C Cast Steel	T 316 SS (F)	BM Bronze with Monel Internals	T 316 SS (F)	E EPDM	ANSI 300#	FF
6"		F Foam**(F)**		T 316 SS	M Bronze/Monel	T 316 SS (F)	M Monel	V Viton	ISO PN10	X Other
8"				N N.A.B.	U Super Duplex	M Monel	U 2507		ISO PN16	
10"				U Super Duplex	X Other	U Super Duplex	X Other		ISO PN25	
12"				X Other		X Other			V Grooved 300#	



Restriction Orifice	Strainer	Check Valve	Optional Features
R0 None	S3 X43	0 None	F Indep. Operating Pressure
R58 X58C	S4 X44	CC CDC	H Drain to Atmosphere
	S6 X46A	C8 81-01	P Pressure Gauge Assembly
	S7 X47A	CS SW200	U Pressure Switch Assembly
			PT Pressure Transmitter
			LS Limit Switch
			PI Position Indicator
			TL Test Loop
			ADC Automatic Drip Check
			LPA Low Pressure Actuation
			CLF Controlled Line Fill