



Offshore Fire Protection

PRESSURE RELIEF

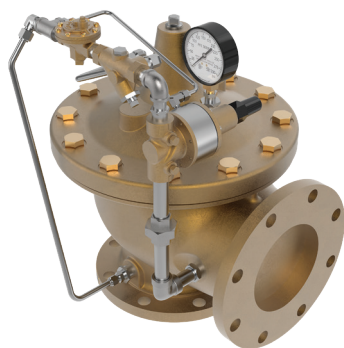


PRESSURE REDUCING



DELUGE VALVES

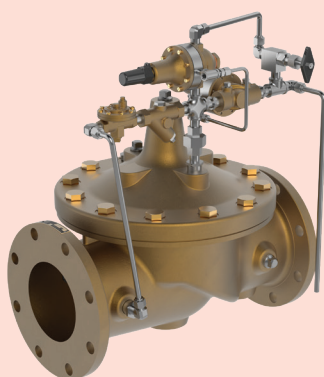
Offshore Fire Protection



Model 50-20 Fire Pump Pressure Relief Valve

Modulates upon fire pump start-up to relieve excess capacity, while maintaining positive system pressure at the pump discharge and preventing surge.

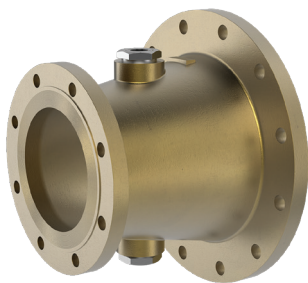
- 2050B-4KG1 available for UL/FM applications
- Sizes: 1-1/2" – 16"



Model 50-49 Pump Start Pressure Relief Valve

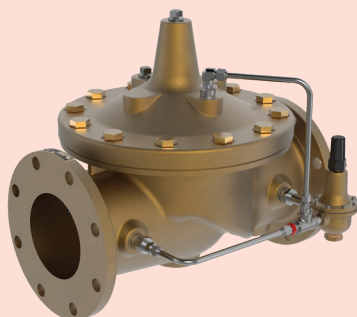
Pump Start / Pressure Relief Valve provides pump and pipeline protection during pump start sequence and pump operation when discharge pressure rises to unsafe levels.

- Sizes: 1-1/2" – 16"
- Seawater Service Materials
- Reduced Cavitation Design
- Drip-tight, Positive Seating Action



Model WC-1 Waste Cone

- Available for Onshore and Offshore Applications
- Manufactured in Accordance with NFPA 20 Requirements
- Available in Nickel Aluminum Bronze - ASTM B148, 316 SS and Super Duplex
- (2) 2" Sight Glasses per WC-1, Available in 316 SS and Monel
- Single Body Casting (No Welding)
- 150# and 300# Flanges
- Raised Face and Flat Faced options available



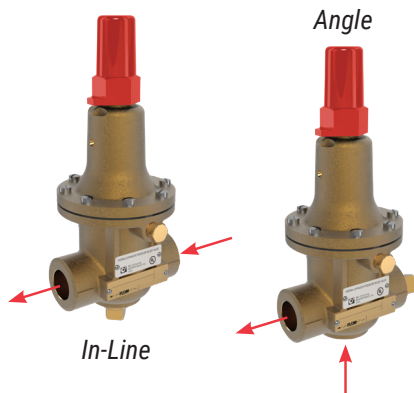
Model 90-42 Pressure Reducing Valve

Automatically reduces a higher inlet pressure to a steady, lower outlet pressure, regardless of flow or inlet pressure fluctuations.

- Globe or Angle Pattern in sizes 1-1/2" - 16"
- Grooved Ends in sizes 1-1/2" - 8"
- Available in Ductile Iron, Cast Steel, NAB, 316 SS and Super Duplex
- 90-21KX for UL Listing – 1-1/2" - 12"



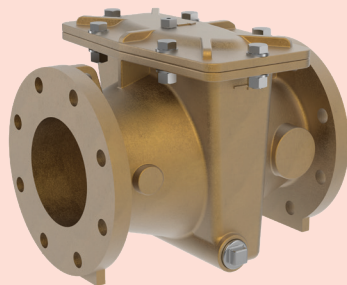
Offshore Fire Protection



Model 55L-60 Pressure Relief Valve / Fire Pump Casing Relief Valve

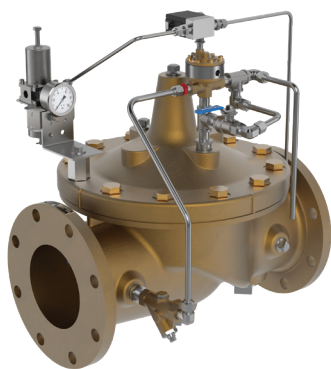
This Direct Acting Valve provides for precise pressure control, operating within very close pressure limits and may be installed in any position, making it ideal for tight locations.

- UL Listed and FM Approved in sizes 1/2" and, 3/4"
- UL Listed in size 1"
- Available in Bronze, Monel, 316 SS and Super Duplex



Model X43HL Seawater "H" Strainer

- Low Pressure Drop
- Service without removal from the line
- Available in: Ductile Iron with SS Mesh or NAB with Titanium Mesh
- 150# and 300# Flanges
- 1-1/2" to 48" upon request



Seawater Deluge Valves

Seawater Deluge Valves are a fast acting on-off control valve which either opens or closes when receiving a pneumatic, electric, hydraulic or manual actuation.

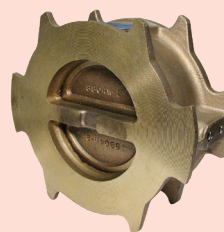
- Sizes: 3" – 12"
- Available in Ductile Iron, Cast Steel, Nickel Aluminum Bronze, 316 SS and Super Duplex
- 150# and 300# Flanges
- See Deluge Catalog for Trim Options



33ATD Series Air Release Valve with Throttling Device

Protects fire protection systems by eliminating air and preventing vacuum conditions from forming in the pipeline.

- UL Listed in sizes 2", 3" and 4"
- NPT, 150# Flanged and 300# Flanged
- Available in Ductile Iron, Cast Steel, Nickel Aluminum Bronze, 316 SS and Super Duplex



582 Two-Door Check Valve

The valve doors close before flow reversal, reducing the potential for water hammer.

- FM Approved 125/150 Class Valves 4" - 16"
- Sizes: 4" - 24"





Global Locations



Global Headquarters

1701 Placentia Avenue
Costa Mesa, CA 92627
949-722-4800
800-942-6326
info@cla-val.com
www.cla-val.com

Fire Products Office USA

Houston, TX
fireproducts@cla-val.com

Western USA
800-942-6326

Central USA
800-533-8181

Eastern USA
800-451-3030

Cla-Val Canada

905-563-4963
sales@cla-val.ca

Cla-Val Latin America

52-(33)-80007565
info@cla-val.com
www.cla-val-latinamerica.com

Cla-Val Europe

Chemin Des Mesanges 1
CH-1032 Romanel/Lausanne
Switzerland
41-21-643-15-55
cla-val@cla-val.ch

Cla-Val United Kingdom

44-1892-514-400
info@cla-val.co.uk

Cla-Val France

33-4-72-25-92-93
cla-val@cla-val.fr

Cla-Val Asia Pacific

+ 64-3-9644860
info@cla-valpacific.com
www.cla-valpacific.com

Cla-Val UAE

+ 971 4 5667665
cla-val@cla-val.ch

Cla-Val Singapore

+65 91798177
wktan@cla-val.com

Cla-Val Thailand

+ 6681 4076118
info@cla-valpacific.com