



90-01H
(Full Internal Port)

MODEL

690-01H

Pressure Reducing Valve with H-Style Strainer



- Sensitive and Accurate Pressure Control
- Easy Adjustment and Maintenance
- Tamper Resistant
- Optional Check Feature
- Fully Supported Frictionless Diaphragm

The Cla-Val Model 90-01H/690-01H Pressure Reducing Valve automatically reduces a higher inlet pressure to a steady lower downstream pressure, regardless of changing flow rate and/or varying inlet pressure. This valve is an accurate, pilot-operated regulator capable of holding downstream pressure to a pre-determined limit. When downstream pressure exceeds the pressure setting of the control pilot, the main valve and pilot valve close drip-tight.

If a check feature is added, and a pressure reversal occurs, the downstream pressure is admitted in the main valve cover chamber, closing the valve to prevent return flow.

Schematic Diagram

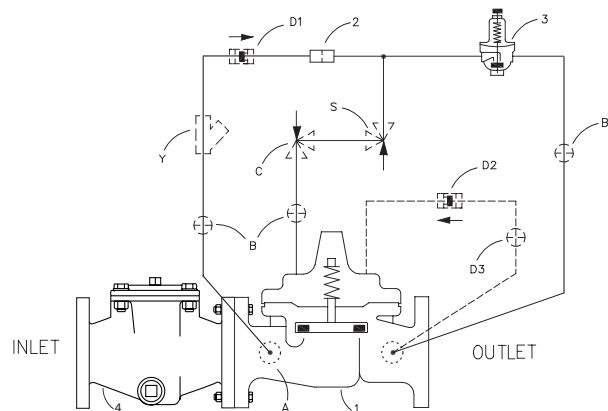
Item	Description
1	100-01 Hytrol Main Valve 100-20H Hytrol Main Valve
2	X58 Restriction Fitting
3	CRD Pressure Reducing Contro
4	X43H "H" Strainer

Optional Features

Item	Description
A	X46A Flow Clean Strainer
B	CK2 Isolation Valve
C	CV Flow Control (Closing)*
D	Check Valves with Isolation Valve
P	X141 Pressure Gauge
S	CV Flow Control (Opening)
V	X101 Valve Position Indicator
Y	X43 "Y" Strainer

*The closing speed control (optional) on this valve should always be open at least three (3) turns off its seat.

The Cla-Val Model X43H H-Style Strainer offers an effective means of removing unwanted solid particles in pipeline flow. These strainers are ideal for preventing fouling, debris and particle buildup in Cla-Val Automatic Control Valves. The large flow area design, with a flat stainless steel strainer mesh perpendicular to flow, is optimized for low pressure drop applications. Maintenance is fast and easy with the compact H-pattern, requiring only top cover removal. The strainer may be installed in any position, however, installation with cover up is recommended.



Typical Applications

Typical applications include pressure reducing valve station using Model 90-01HBY/690-01HBY and Model 90-01HAS/690-01HAS in parallel to handle wide range of flow rates. Larger Model 90-01HBY/690-01HBY valve meets requirements of peak loads and smaller Model 90-01HAS/690-01HAS handles low flows.

