



# Commercial Fire Protection

PRESSURE RELIEF



PRESSURE REDUCING



LEVEL CONTROL

# Commercial Fire Protection



2050B-4KG1 (Angle)

## Model 50B-4KG1/2050B-4KG1 Fire Pump Pressure Relief Valve

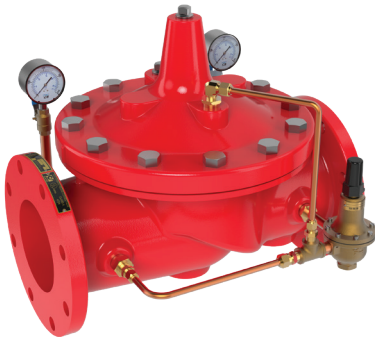
Modulates upon fire pump start-up to relieve excess capacity, while maintaining positive system pressure at the pump discharge and preventing surge.

- UL Listed in sizes 3" - 8"
- ULC Listed in sizes 3" - 8"
- FM Approved in sizes 3" - 8"



## Model WC-1 Waste Cone

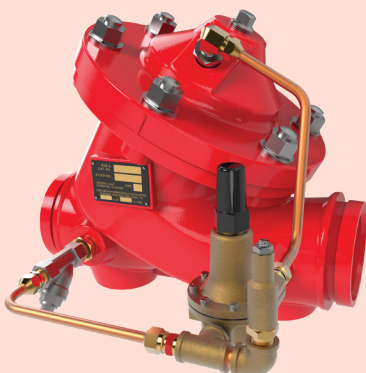
- Available for Onshore and Offshore Applications
- Manufactured in Accordance with NFPA 20 Requirements
- Available in Ductile Iron, NAB, 316 SS and Super Duplex
- (2) 2" Sight Glasses per WC-1, Available in 316 SS and Monel
- Single Body Casting (No Welding)
- 150# and 300# Flanges
- Raised Face and Flat Faced options available



## Model 90-21 Pressure Reducing Valve for Fire Applications

Automatically reduces a higher inlet pressure to a steady, lower outlet pressure, regardless of flow or inlet pressure fluctuations.

- UL Listed in sizes 1-1/2" - 12"
- ULC Listed in sizes 1-1/2" - 12"
- Grooved Ends in sizes 1-1/2" - 8"
- Available in Ductile Iron, Cast Steel, NAB, Super Duplex, others



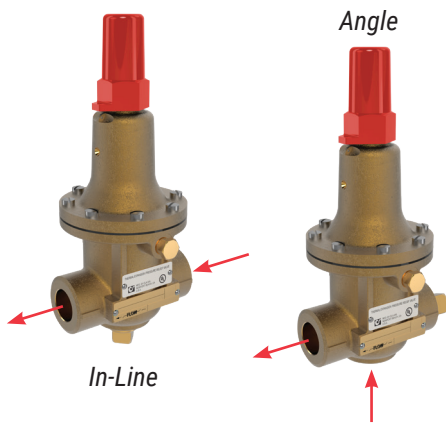
## Model 90-FPX Pressure Reducing Valve for Fire Applications

Cla-Val 90-FPX Pressure Reducing Valves are indispensable in any fire protection system. Available in sizes 2" thru 6", our diaphragm actuated design is proven to be highly reliable and easy to maintain.

- FM Approved in sizes 2" - 6"
- Grooved Ends in sizes 2" - 6"
- Available in Ductile Iron, Cast Steel, NAB, Super Duplex, others



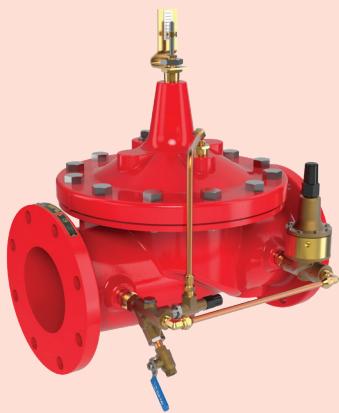
# Commercial Fire Protection



## Model 55L-60 Pressure Relief Valve / Fire Pump Casing Relief Valve

This Direct Acting Valve provides for precise pressure control, operating within very close pressure limits and may be installed in any position, making it ideal for tight locations.

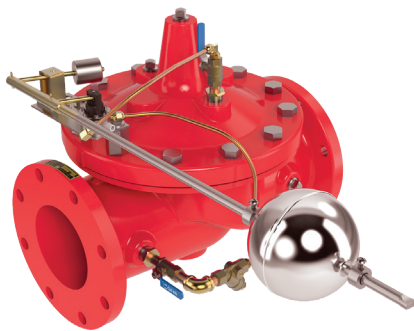
- UL Listed and FM Approved in sizes 1/2" and, 3/4"
- UL Listed in size 1"
- Available in Bronze, Monel, and 316 SS



## Model 50B-5KG Fire Pump Suction Relief Valve

Modulates to prevent pump suction pressure from dropping below a pre-set minimum, ensuring that the pump draw does not exceed the available water supply.

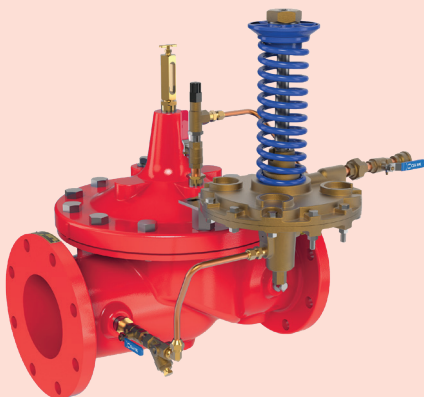
- FM Approved 3" - 10"
- Controlled Closing For System Protection
- Modulates Within 5% of Setting for Accurate Pressure Control
- Pressure Setting Adjustable
- Pressure Setting Not Affected by Pressure at Valve Discharge
- 150# and 300# Flanges, Grooved Ends



## Model 124-01 Float Valve

The Cla-Val Model 124-01/624-01 Float Valve is a non-modulating valve that accurately controls the liquid level in tanks. This valve is designed to open fully when the liquid level reaches a pre-set low point and close drip-tight when the level reaches a preset high point.

- Accurate and Repeatable Level Control
- On-Off or Non-Modulating Action
- Fully Adjustable High and Low Level Settings
- Simple Design, Proven Reliable
- Easy Installation and Maintenance



## Model 210-01 Altitude Valve For One-Way Flow

The Cla-Val Model 210-01/610-01 Altitude Valve controls the high water level in reservoirs without the need for floats or other devices. It is a non-throttling valve that remains fully open until the shut-off point is reached. This valve is designed for one-way flow only.

- Accurate and Repeatable Level Control
- Drip-Tight, Positive Shut-Off
- Reliable Hydraulic Operation
- Easily Adjustable Control
- Completely Automatic Operation



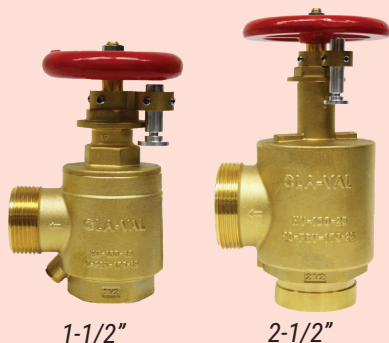
# Commercial Fire Protection



## HV-100-15 and HV-100 25 Hose Valves UL, ULC and FM

Available in a variety of hose thread adapters including BCT, CSA, NSST, NPSH, NST, QST, WCT, Louisville, Cleveland, Chicago, Pittsburgh, New Cincinnati, New York Corp, New York Fire Department, Richmond, and Raleigh

- Sensitive and Accurate Performance
- UL/ ULC Listed
- FM Approved

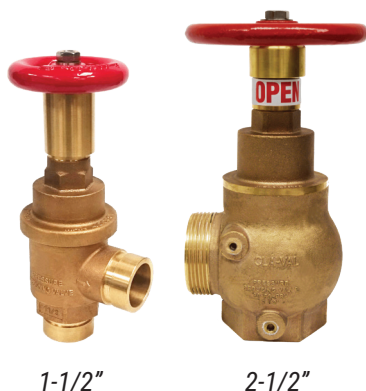


## Series 90-PRV-175 Pressure Restricting Valve

Features a Cast Brass finish body with Forgeline Bonnet and Seat Assembly. The system water pressure is controlled by adjusting the flow restriction, however if full flow is required the restriction can be overridden. The valve is factory tested to 300 psi (2070 KPa).

### UL and ULC Listed • FM Approved

- Model # 90-PRV-175-15: size 1-1/2"
- Model # 90-PRV-175-25: size 2-1/2"



## Series 90-FS-PRV Factory Set Pressure Reducing Valve

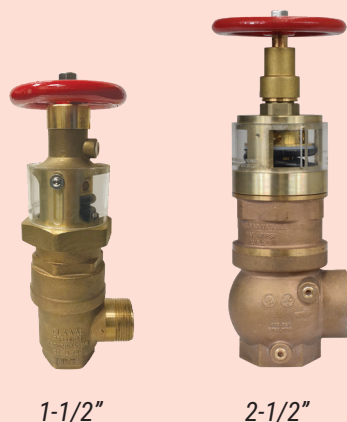
The valve is in compliance with NFPA 13 and 14 systems and can handle "Flow" and "No Flow" conditions. The valve is rated for systems up to a maximum inlet pressure of 300 psi and can be used as a standpipe valve, floor control valve and a checking device.

**End Connections:** Female x Female; Female x Male;  
Grooved x Grooved and Grooved by Male

**Available hose thread adapters:** See list under HV-100 Hose Valves

### UL and ULC Listed

- Model # 90-FS-PRV-15: size 1-1/2"
- Model # 90-FS-PRV-25: size 2-1/2"



## Series 90-ADJ-PRV Field Adjustable Pressure Reducing Valve

The valve is in compliance with NFPA 13 and 14 systems and can handle "Flow" and "No Flow" conditions. The valve is rated for systems up to a maximum inlet pressure of 300 psi and can be used as a standpipe valve, floor control valve and a checking device.

**End Connections:** Female x Female; Female x Male;  
Grooved x Grooved and Grooved by Male

**Available hose thread adapters:** See list under HV-100 Hose Valves

### UL and ULC Listed

- Model # 90-ADJ-PRV-15: size 1-1/2"
- Model # 90-ADJ-PRV-25: size 2-1/2"



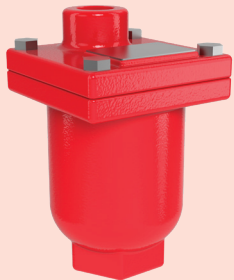
# Commercial Fire Protection



## 33ATD Series Air Release Valve with Throttling Device

Protects fire protection systems by eliminating air and preventing vacuum conditions from forming in the pipeline.

- UL Listed in sizes 2", 3" and 4"
- NPT, 150# Flanged and 300# Flanged



## 34 Series Air Release Valve

Automatically vents entrained air that collects at high points in a pipeline, preventing against decreased flow capacity and the possibility of complete air blockage and pipe rupture caused by excessive air accumulation. 300 psi MWP.

- UL Listed and FM Approved in sizes 1/2", 3/4" and 1"



## 580 Silent Wafer Check Valve

A spring-loaded poppet allows the valve to close before flow reversal occurs, resulting silent, non-slam closure.

- FM Approved 125/150 Class Valves 2" - 10"



## 581 Silent Globe Check Valve

The valve's Ductile iron body with stainless steel trim offers watertight shutoff with metal-to-metal seating.

- FM Approved 125/150 Class Valves 2-1/2" - 12"



## 582 Two-Door Check Valve

The valve doors close before flow reversal, reducing the potential for water hammer.

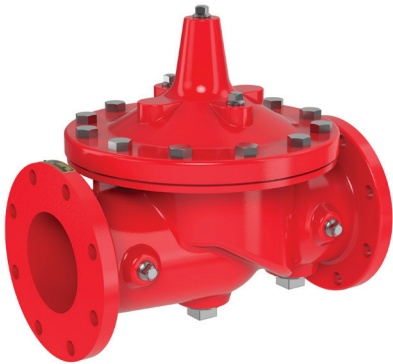
- FM Approved 125/150 Class Valves 2-1/2" - 16"
- UL Listed 2-1/2" - 12"



## Test Headers

- Manufactured in Accordance with NFPA 20 Requirements
- Developed for UL/FM Approved Fire Systems
- Available in sizes 4", 6", 8" and 10"
- Designed to allow 250 gpm per test connection

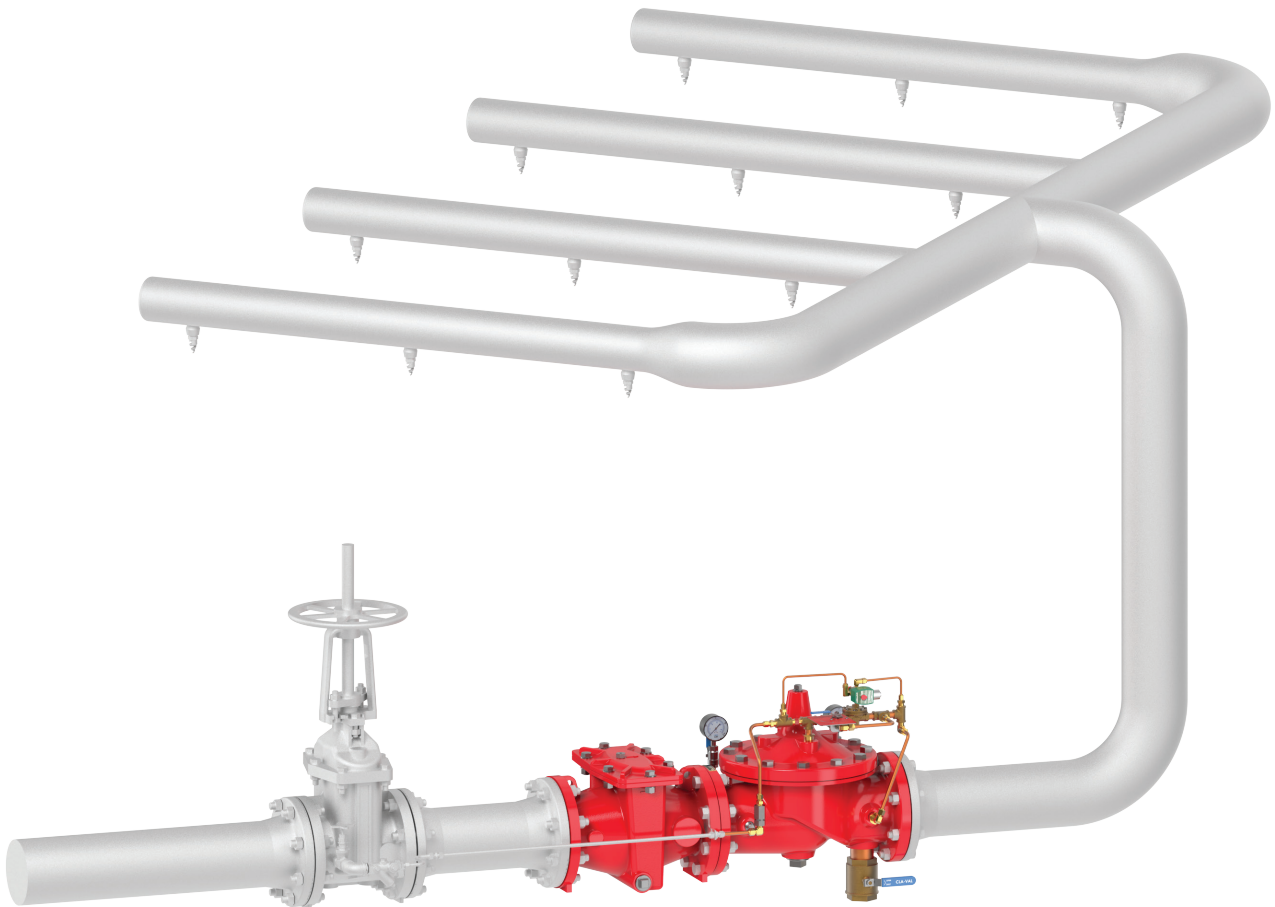




## Deluge Valves

Deluge Valves are a fast acting on-off control valve which either opens or closes when receiving a pneumatic, electric, hydraulic or manual actuation.

- Sizes: 3" – 12"
- Available in Ductile Iron, Cast Steel, Nickel Aluminum Bronze, 316 SS and Super Duplex
- 150# and 300# Flanges, Grooved Ends
- See Deluge Catalog for Trim Options



# Commercial Fire Protection

## Choosing a Deluge Valve

	ACTUATION	HYDRAULIC	PNEUMATIC
STANDARD	MANUAL	-UA -UB	-UD
	SOLENOID	-UP	-UR
LATCHING	MANUAL	-UBL -UC	-UDL
	SOLENOID	-UPL	-URL
REGULATING	MANUAL	-UBR	-UDR
	SOLENOID	-UPR	-URR
LATCHING REGULATOR	MANUAL	-UBRL	-UDRL
	SOLENOID	-UPRL	-URRL
FAIL LAST POSITION	STANDARD	-UT	-UU
	REGULATING	-UTR	-UUR
FAIL SAFE	SINGLE	-UO-FS1	-UQ-FS1
	DOUBLE	-UO-FS2	-UQ-FS2



# Global Locations



## Global Headquarters

1701 Placentia Avenue  
Costa Mesa, CA 92627  
949-722-4800  
800-942-6326  
info@cla-val.com  
[www.cla-val.com](http://www.cla-val.com)

## Fire Products Office USA

Houston, TX  
fireproducts@cla-val.com

## Western USA

800-942-6326

## Central USA

800-533-8181

## Eastern USA

800-451-3030

## Cla-Val Canada

905-563-4963  
Sales@cla-val.ca

## Cla-Val Latin America

52-(33)-80007565  
info@cla-val.com  
[www.cla-val-latinamerica.com](http://www.cla-val-latinamerica.com)

## Cla-Val Europe

Chemin Des Mesanges 1  
CH-1032 Romanel/Lausanne  
Switzerland  
41-21-643-15-55  
cla-val@cla-val.ch

## Cla-Val United Kingdom

44-1892-514-400  
info@cla-val.co.uk

## Cla-Val France

33-4-72-25-92-93  
cla-val@cla-val.fr

## Cla-Val Asia Pacific

+ 64-3-9644860  
info@cla-valpacific.com  
[www.cla-valpacific.com](http://www.cla-valpacific.com)

## Cla-Val UAE

+ 971 4 5667665  
cla-val@cla-val.ch

## Cla-Val Singapore

+65 91798177  
wktan@cla-val.com

## Cla-Val Thailand

+ 6681 4076118  
info@cla-valpacific.com