



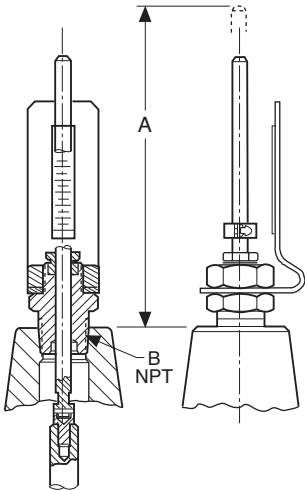
Model **X101C**

VALVE POSITION INDICATOR

PRODUCT FEATURES

Cla-Val Model X101C Valve Position Indicator is designed to display Cla-Val valve position quickly and easily. A solid stainless steel indicator rod is fastened directly to the valve stem. The adjustable indicator is a collar attached to this rod. The percent of opening scale is attached to the mounting bracket. As the valve opens and closes, the percent open is read directly from the indicator scale.

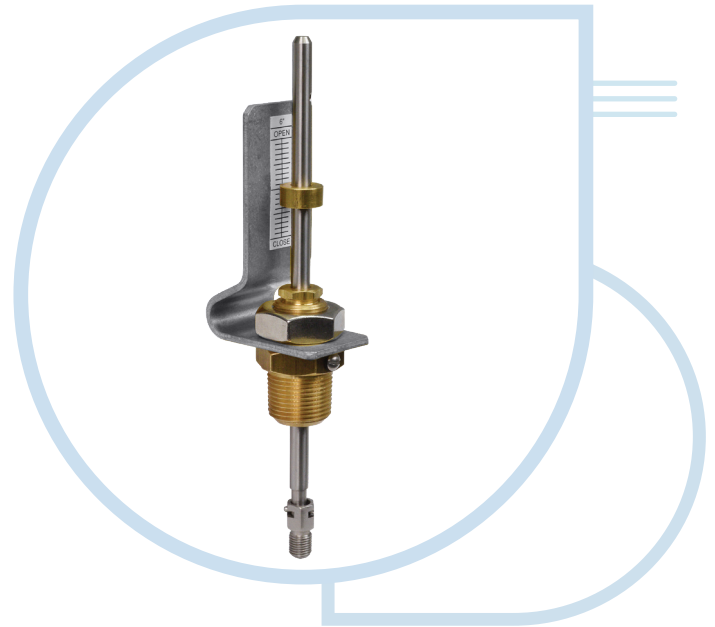
DIMENSIONS



Valve Size	A INCHES	B NPT
1 1/4"	10.19	1/4
1 1/2"	10.19	1/4
2"	7.45	1/2
2 1/2"	7.17	1/2
3"	7.34	1/2
4"	7.00	3/4
6"	6.69	3/4
8"	6.90	1
10"	9.88	1
12"	9.59	1 1/4
14"	9.16	1 1/2
16"	11.00	2
18"	9.76	2
20"	10.09	2
24"	11.41	2
30"	12.75	2
36"	13.91	2

8", 10", 12", & 14" SIZES ONLY

Dimension "A" is height added to valve by indicator assembly.
The Model X101C is included with FM Approved valves in 3", 4", 6", 8" sizes.



SPECIFICATIONS

Sizes:	1-1/2" thru 36"
Standard Materials*:	Brass, Stainless Steel, Buna-N Rubber
Pressure Rating:	400 psi

**Optional Materials Available*

CLA-VAL Company
www.cla-val.com
info@cla-val.com
 S-X101C (R-03/2025)