

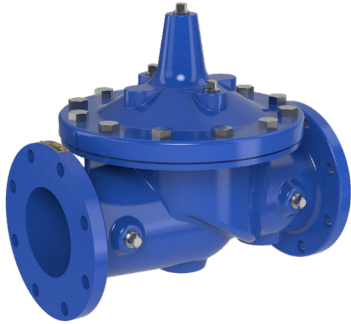


Automatic Control Valves

For Mining Applications

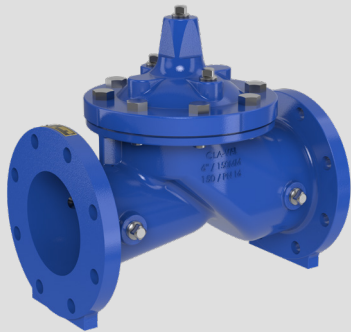


PRESSURE REDUCING | PRESSURE RELIEF | LEVEL CONTROL | ELECTRONICS



Model 100-01 Full Port Hytrol Valve

- The 100-01 Hytrol Valve is a hydraulically operated, diaphragm actuated, globe or angle pattern valve.
- Drip-Tight, Positive Seating
- Service Without Removal From Line
- Threaded, Flanged or Grooved Ends
- Globe or Angle Pattern
- Every Valve Factory Tested



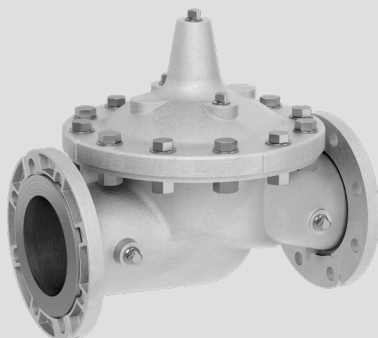
Model 100-20 Reduced Port Hytrol Valve

- The 100-20 Hytrol Valve is a hydraulically operated, diaphragm actuated, globe or angle pattern valve.
- Reduced Cavitation Design
- Drip-Tight, Positive Seating Action
- Service Without Removal From Line
- Globe or Angle Pattern
- Every Valve Factory Tested



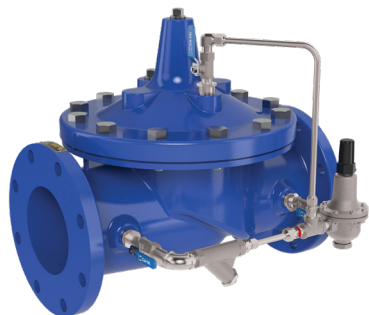
Pump Control Valve

- The Pump Control Valve is a hydraulically operated diaphragm valve with two separate chambers to control valve position.
- Globe or Angle Pattern
- Drip-Tight, Positive Seating
- Dual Chamber
- Packless Construction



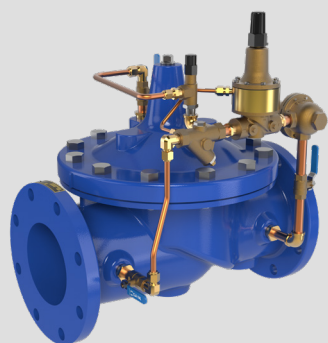
Model 100-46 Stainless Steel Hytrol Valve

- The 100-46 Hytrol Stainless Steel Valve is a full ported hydraulically operated, diaphragm actuated, globe pattern valve with all Stainless Steel metal parts.
- Reduced Cavitation Design
- Drip-Tight, Positive Sealing Action
- Service Without Removal From Line
- Packless Construction



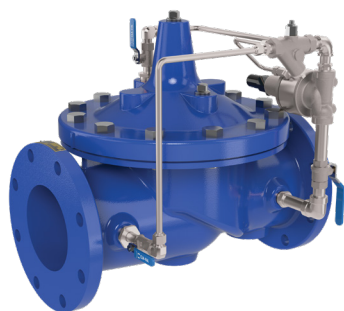
90 Series Pressure Reducing Valve

- Automatically reduce a higher inlet pressure to a steady lower downstream pressure, regardless of changing flow rate and/or varying inlet pressure using a CRD pilot control
- End Connections: Threaded, Flanged and Grooved
- Sizes 1-inch through 36-inches
- Series 690 is the reduced port version of the 90-01



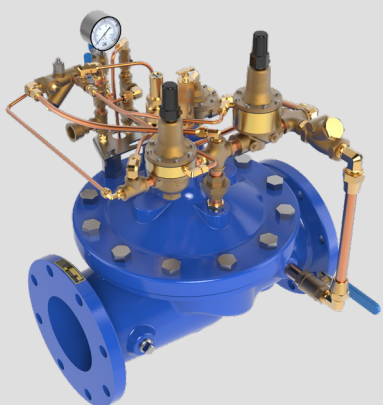
92 Series Combination Pressure Reducing and Pressure Sustaining Valve

- Performs two independent functions in a waterworks system:
 - 1) Maintains a constant downstream pressure
 - 2) Sustains the upstream pressure to a pre-determined minimum
- End Connections: Threaded, Flanged and Grooved
- Sizes 1-inch through 36-inches
- Series 692 is the reduced port version of the 92-01



50 Series Pressure Relief and Pressure Sustaining Valve

- The valve is actuated by line pressure through the CRL-60 pilot control, opening fast to maintain steady line pressure but closing gradually to prevent surges
- End Connections: Threaded, Flanged and Grooved
- Sizes 1-inch through 36-inches
- Series 650 is the reduced port version of the 50-01



52 Series Pressure Relief and Surge Anticipator Valve

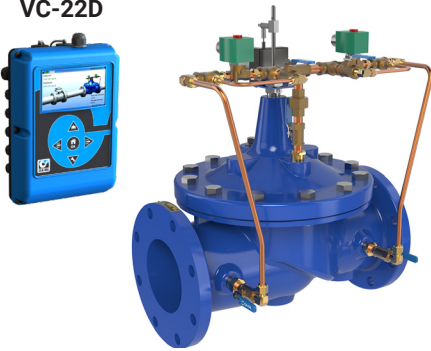
- During pump starts and stops, the control valve opens on the initial low pressure wave, anticipating and diverting the returning high pressure wave from the system
- End Connections: Threaded, Flanged and Grooved
- Sizes 2-1/2-inches through 18-inches
- Series 652 is the reduced port version of the 52-03

Solenoid Control Valves

All valves available
in Stainless Steel



VC-22D



131 Series Electronic Control Valve with VC-22D Controller

- The valve is a hydraulically operated with solenoid pilot controls, actuated by electrical signals from the VC-22D Electronic Valve Controller anywhere remote control is desired
- End Connections: Threaded, Flanged and Grooved
- Sizes 1-inch through 36-inches
- Series 631 is the reduced port version of the 131-01

VC-22D



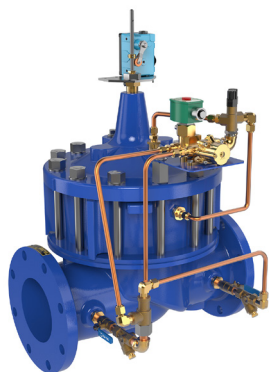
133 Series Metering Valve with VC-22D Controller

- The 133 Series metering valve is a completely self contained valve and control system that accurately meters and/or controls flow rate
- Completely Self Contained
- Reliable Analog Communications
- Retransmission Capabilities
- Ideal for Retrofitting Existing Valves
- Security System to Prevents Unauthorized Changes



136 Series Solenoid Control Valve

- The 136 Series valve is an on-off control valves that either opens or closes upon receiving an electrical signal to the solenoid pilot control
- End Connections: Threaded, Flanged and Grooved
- Sizes 1/2-inch through 36-inches
- Series 636 is the reduced port version of the 136-01 valve



60 Series Booster Pump Control Valve

- 60 Series Booster Pump Control Valves are installed on the discharge of booster pumps to eliminate pipeline surges caused by the starting and stopping of the pump
- 60 Series Valves are specifically designed for larger sized pump stations
- End Connections: Threaded and Flanged
- Sizes 10-inches through 16-inches
- Reduced port valve: 660 Series



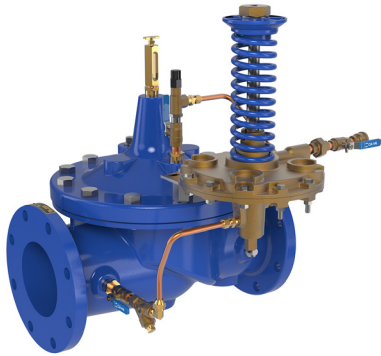
61 Series Deep Well Pump Control Valve

- 61 Series Deep Well Pump Control Valves are designed to protect pipelines from surges caused by the starting and stopping of deep well pumps
- Separate adjustable flow control valves in the pilot system regulate the opening and closing rates
- End Connections: Threaded and Flanged
- Sizes 2-1/2-inches through 24-inches
- Reduced port valve: 661 Series



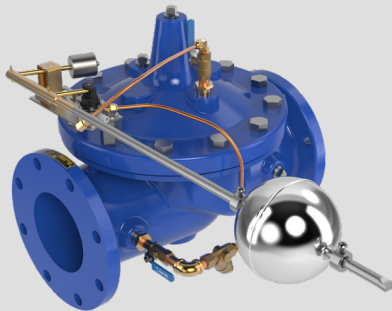
63 Series Pump Control Valve

- Valve can be sized for minimal head loss
- Eliminates surges due to starting and stopping of pumping system
- Electronically control opening and closing speed, time and position
- Programmable control curves for optimum opening and closing rates
- Multi-function capability; hydraulic check feature
- Valve can be sized for minimal head loss
- Eliminates surges due to starting and stopping of pumping system



210 Series Altitude Valve for One-Way Flow

- 210 Series Valves control the high water level in reservoirs
- The valves remain fully open until the shut-off point is reached
- End Connections: Threaded, Flanged and Grooved
- Sizes 1-inch through 36-inches
- Reduced port valve: 610 Series



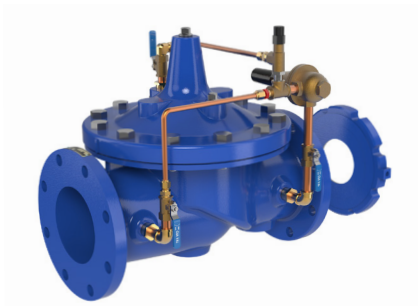
124 Series Non-Modulating Float Valves

- 124 Series Non-Modulating Float Valves accurately control the liquid level in water storage tanks and reservoirs
- End Connections: Threaded, Flanged and Grooved
- Sizes 1/2-inch through 6-inches
- Reduced port valve: 624 Series



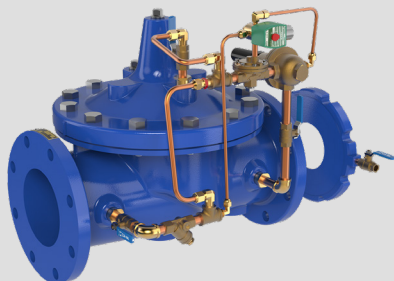
428 Series Modulating Float Valve

- 428 Series Float Valves modulate to maintain a constant liquid level in a storage tank
- End Connections: Threaded, Flanged and Grooved
- Sizes 1/2-inch through 6-inches
- Reduced port valve: 628 Series



40 Series Flow Control Valve

- 40 Series Flow Control Valves prevent excessive flow by limiting flow to a pre-selected maximum rate, the CDHS18 pilot control
- End Connections: Threaded, Flanged and Grooved
- Sizes 1-1/2-inch through 36-inches
- Reduced port valve: 640 Series



43 Series Combination Rate of Flow Controller and Solenoid Shut-Off Valve

- 43 Series Combination Rate of Flow Controller and Solenoid Shut-Off Valves limit the maximum flow rate,
- End Connections: Threaded, Flanged and Grooved
- Sizes 1-1/2-inch through 36-inches
- Reduced port valve: 643 Series



49 Series Rate of Flow and Pressure Reducing Valve

- 49 Series Rate of Flow and Pressure Reducing Valves reduces a higher inlet pressure to a steady lower outlet pressure
- End Connections: Threaded, Flanged and Grooved
- Sizes 1-1/2-inch through 36-inches
- Reduced port valve: 649 Series



Threaded



Flanged

33A Series High-Performance Air Release & Vacuum Breaker Valves

- Standard Maximum Operating Pressure 300 psi
- Standard Epoxy Coated Ductile Iron Body
- Automatically Eliminates Entrapped Air Pockets and Provides Vacuum Protection
- Easily Serviced
- Tested to Seal at 2 psi
- Meets AWWA C512 Requirements



Threaded



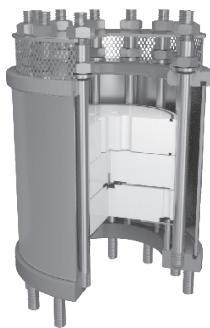
Flanged

33AWS Series Well Service Combination Air Release & Vacuum Breaker Valves

- Full Unrestricted Air Vacuum Protection
- Permits Regulating Volume of Air Discharge From Vertical Turbine Well Pump
- Standard Max. Operating Pressure 300 psi
- Standard Epoxy Coated Ductile Iron
- Easily Serviced
- Tested to Seal at 2 psi
- 1" - 4" Standard w/Throttling Device
- Arrestor Check Available on 4" & 6"
- Meets AWWA C512 Requirements



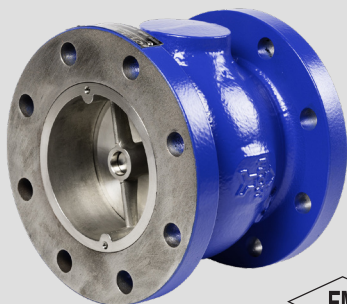
1" & 2" Threaded



1" to 8" Flanged

39A SERIES - Pipeline Applications for potable water Anti Slam Air Release and Vacuum Break Air Valves

- Min operating pressure of 7.25 psi
- Max operating pressure of up to 1450 psi
- Available from DN15 up to
- Operating temperatures are from 32° to 176°
- Available in various coating options
- Available in various materials of construction



581 Series Silent Globe Check Valve

- Operates Horizontally or Vertically
- Watertight Metal-to-Metal Seating
- Field Replaceable Parts
- Factory Mutual Approved 4 through 12-inches
- Optional Resilient Seat

Duckbill Check Valves



Model RF-DBF Rubber-Flex Flanged Duckbill Check Valve

- Available in sizes 1" - 72" (25mm - 1800mm)
- Standard flange drilling is ANSI 125/150# but can be supplied with ANSI 250/300, DIN, JIS, BS or AS Flange patterns
- 1" - 2" (25mm - 50mm) cracking pressure enables these valves to have the lowest head loss in the industry
- 316SS retaining rings are supplied as standard



Model RF-DBI Rubber-Flex Flanged In-Line Duckbill Check Valve

- Available in sizes 2" - 72" (50mm - 1800mm)
- This valve can be slipped inside of a pipe and installed between two existing pipe flanges, eliminating the need for a valve body
- Standard flange drilling is ANSI 125/150# but can be supplied with ANSI 250/300, DIN, JIS, BS or AS Flange patterns
- 1" - 2" (25mm - 50mm) cracking pressure enables these valves to have the lowest head loss in the



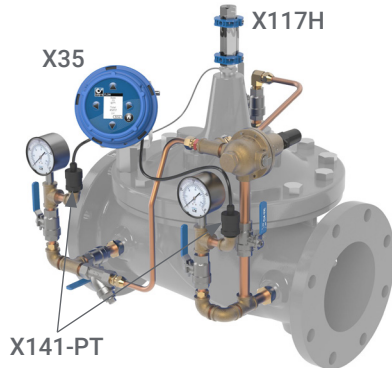
Model RF-DBO Rubber-Flex Slip-On Duckbill Check Valve

- Available in sizes 1" - 72" (25mm - 1800mm)
- Designed to slip directly over an existing pipe
- Supplied with heavy duty stainless steel clamps
- Can be installed in either a vertical or horizontal position
- 1" - 2" (25mm - 50mm) cracking pressure enables



Model RF-DBI-IN Rubber-Flex Slip-In In-Line Duckbill Check Valve

- Available in sizes 2" - 36" (50mm - 900mm)
- Ideal for corrosive materials
- Designed to fit directly in-side of an existing pipe
- Includes Stainless Steel Expansion Clamp to secure valve in place
- Can be installed in either a vertical or horizontal position
- 1" - 2" (25mm - 50mm) cracking pressure enables these



Model XP2F

- The Cla-Val Model XP2F Data Acquisition and Metering Package is comprised of the X35 Data Module, the X117H Valve Position Transmitter, and two X141-PT Pressure Transmitter assemblies.
- Turns your Cla-Val valve into an all encompassing Instrumentation package that includes Upstream Pressure, Downstream Pressure, Valve Position Instantaneous Flow and Totalized Flow.
- When deployed across the system network the XP2F package allows for insight into pressure, leakage, flow and system distribution management.



VC-22D Electronic Valve Controller

- Provides remote or local set-point control for valves in a variety of fluid applications
- Available versions: IP-68, IP-65 and Panel Mount
- Supplied with pre-loaded ValvApps™ for most common valve functions
- Custom ValvApps™ can be created for unique applications



PC-22D Pump Control Panel

- Pre-programmed Valve Controller
- Suitable for all Booster Pump and Deep Well Applications
- Electronically Control Open/Closing Speed of Control Valve
- Indicator Lights Monitor System Status
- NEMA 4X Rated Enclosure
- Local visual indication of pump and control valve status
- Easy to adjust sequence timers



Cla-Val 34 Series Electronic Actuated Pilot Control

- Provides simplified remote valve set-point adjustment
- Enables accurate downstream control using any SCADA-type control system using an analog 4-20mA signal
- 12-24VDC input power
- Available in Stainless Steel
- Available configurations:
 - CRD-34 Pressure Reducing Electronic Pilot Control
 - CRL-34 Pressure Sustaining Electronic Pilot Control
 - CDHS-34 Rate-of-Flow Electronic Pilot Control

Field Service and Maintenance



One of the best ways to ensure that your system operates at peak efficiency is to perform preventive maintenance on a regular basis. When it comes to Cla-Val automatic control valves, no one can do a better job at keeping your valves in tip-top shape than our own in-house factory trained field service technicians, ready to serve you.

Capabilities and Services

- Emergency repairs
- Inspection, maintenance and cleaning of installed valves, without removal from the pipeline
- On-site valve refurbishment, including replacement of rubber goods and change-out of metal parts as needed
- Start-up services for new systems and valves
- Field retrofits of a full line of accessories and components to enhance or change valve function
- Safe work practices performed by confined space certified technician
- Fully equipped service vehicle, outfitted with crane for heavy lifting
- Complete inventory of replacement parts, direct from the factory
- Technical and Engineering Support

Serving the following markets:

- Municipal and Rural Waterworks
- Industrial
- Irrigation
- HVAC
- Fire Protection
- Mining



So. California	No. California	Arizona	Utah	Central	Eastern
24100 Water Avenue Perris, CA 92570 951.657.1718 855.512.6965	1275 Ventura Lane Turlock, CA 95380 855.512.6965	2753 East Broadway Road, Suite 101-0455 Mesa, AZ 85204 949.554.7830	810 W Utah Ave #9 Payson, UT 84651 949.205.6032 855.512.6965	8707 Forney Road Dallas, TX 75227 214-388-3493 800-533-8181	161 Woodbine Street Bergenfield NJ 07621 201.300.7769 347.752.0720



Global Locations



Global Headquarters

1701 Placentia Avenue
Costa Mesa, CA 92627
949-722-4800
800-942-6326
info@cla-val.com
www.cla.val.com

Western USA

800-942-6326

Central USA

800-533-8181

Eastern USA

800-451-3030

Cla-Val Canada

905-563-4963
sales@cla-val.ca

Cla-Val Latin America

52-(33)-80007565
info@cla-val.com
www.cla-val-latinamerica.com

Cla-Val Europe

Chemin Des Mesanges 1
CH-1032 Romanel/Lausanne
Switzerland
41-21-643-15-55
cla-val@cla-val.ch

Cla-Val United Kingdom

44-1892-514-400
info@cla-val.co.uk

Cla-Val France

33-4-72-25-92-93
cla-val@cla-val.fr

Cla-Val Asia Pacific

+ 64-3-9644860
info@cla-valpacific.com
www.cla-valpacific.com

Cla-Val UAE

+ 971 4 5667665
cla-val@cla-val.ch

Cla-Val Singapore

+65 91798177
wktan@cla-val.com