



CLA-VAL **VALVES** **FOR PFAS**

PRESSURE FILTERS



VALVES FOR PFAS

TABLE OF CONTENTS



System Overview 4

Model 131-01 5

Model 50-01 5

Model 40-01 6

Check Valves 7

Air Valves 8

Cla-Tools 9

Link2Valves 10

Field Services 11

“Meeting Today’s Water Quality Needs
While Planning for Tomorrow’s Risks.”

PFAS Water System AND VALVES



System Overview

A PFAS water system is designed to remove harmful per- and polyfluoroalkyl substances (PFAS), often called “forever chemicals,” from drinking water, groundwater, or wastewater. These systems use technologies like granular activated carbon, ion exchange, or reverse osmosis to reduce PFAS levels and protect public health.

Valves play a critical role in these systems by controlling flow, isolating treatment units, managing chemical dosing, and ensuring safe maintenance operations. Selecting the right valve types and materials is essential for reliable system performance and preventing leaks or contamination. Effective valve integration enhances operational efficiency, safety, and long-term system durability—making them a key component in ensuring clean, safe water.

Hydraulic System Analysis

To make better informed decisions regarding your water systems, you need to do some analysis. The Cla-Tools Software Suite allows any user to analyze their current or future planned water systems. Analyze everything from VFD Pump Flow and Controllability to PRV Station or Check Valve design. Regardless of your needs, Cla-Tools can provide unique insights into numerous aspects of your water system.

Access our secure tools from your browser to perform real time analysis for any number of situations. You will have immediate access to:

- Cla-CAV to analyze pilot controlled valves for the potential of cavitation
- Cla-Station to analyze multi-line Pressure Reducing Vaults
- Cla-Reg for sizing of CRD-L and 90 series pilots used in buildings
- And many, many more...

Model 131-01



QUICK OVERVIEW



The Cla-Val Series 131 Electronic Control Valves are designed specifically for applications where remote control of the valve is preferred. It is a hydraulically operated, pilot controlled, diaphragm valve. The solenoid pilot controls are actuated by electrical signals from the optional VC-22D Electronic Valve Controller. The solenoid pilots either add or relieve line pressure from the cover chamber of the valve, causing it to open or close as directed by the electronic controller.

Available Sizes:

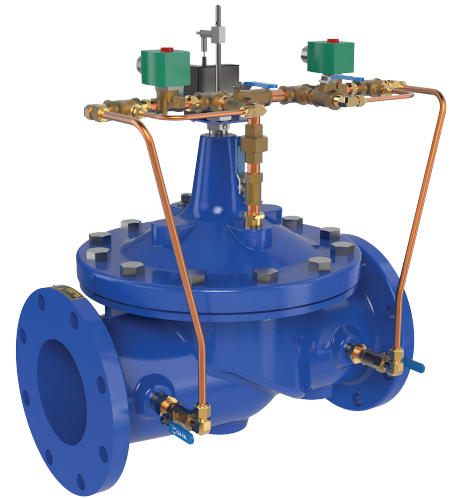
- 1" - 36"

Pressure Rating:

- Class 150: 250 psi
- Class 300: 400 psi
- Grooved 300: 400 psi

Available Materials:

- Epoxy Coated Ductile Iron
- Nickel Aluminum Bronze
- Cast Steel



Model 50-01



QUICK OVERVIEW

The Cla-Val Model 50-01 Pressure Relief Valve is actuated by line pressure through a pilot control system, opening fast to maintain steady line pressure but closing gradually to prevent surges. Operation is completely automatic and pressure settings may be easily changed. This valve can be used for pressure relief, pressure sustaining, back pressure, or unloading functions in a bypass system.

Available Sizes:

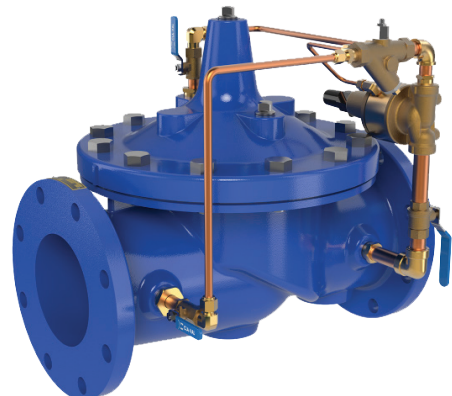
- 1" - 36"

Pressure Rating:

- Class 150: 250 psi
- Class 300: 400 psi
- Grooved 300: 400 psi

Available Materials:

- Epoxy Coated Ductile Iron
- Nickel Aluminum Bronze
- Cast Steel



Model 40-01



QUICK OVERVIEW

The Cla-Val Model 40-01 Rate of Flow Control Valve prevents excessive flow by limiting flow to a preselected maximum rate, regardless of changing line pressure. It is a hydraulically operated, pilot controlled, diaphragm valve. The pilot control responds to the differential pressure produced across an orifice plate installed downstream of the valve. Accurate control is assured as very small changes in the controlling differential pressure produce immediate corrective action of the main valve. Flow rate adjustments are made by turning an adjusting screw on the pilot control.

Available Sizes:

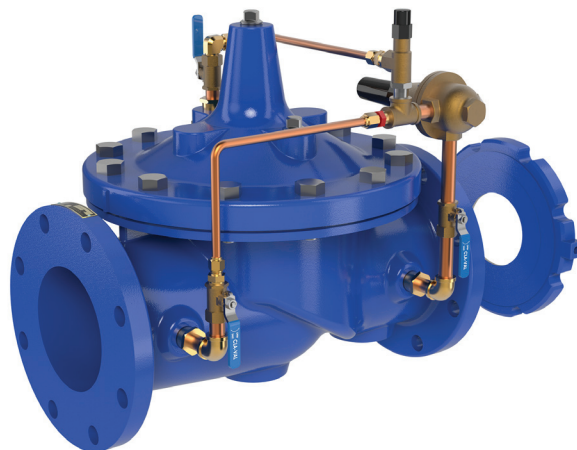
- 1.5" - 36"

Pressure Rating:

- Class 150: 250 psi
- Class 300: 400 psi
- Grooved 300: 400 psi

Available Materials:

- Epoxy Coated Ductile Iron
- Nickel Aluminum Bronze
- Cast Steel



Check VALVES

QUICK OVERVIEW



Cla-Val check valves are high-performance flow control devices designed to allow fluid to flow in one direction while preventing reverse flow, ensuring system protection. They are built with durable materials to handle a variety of applications, including waterworks, industrial processes, and fire protection systems. Known for their reliability and minimal maintenance requirements, Cla-Val check valves provide efficient and long-lasting performance in demanding environments.

Check Valves

- 581 Silent Globe Check Valves
- 580 Silent Wafer Check Valves
- 81-01 Check Valves
- 501A Wafer Swing Check Valves
- 585 Swing Check Valves
- 584 Flex-Check Valves
- 587 Surge Blocker



Air VALVES

QUICK OVERVIEW



Cla-Val Air Release and Combination Air Release/Vacuum Breaker Valves protect water systems by automatically eliminating air pockets and preventing vacuum buildup during filling or draining. Excess air can reduce system capacity, increase pump power demand, and even cause line breaks. Installing Cla-Val valves at high points, near pumps, along long pipe runs, and at deep well installations helps prevent these issues and ensures smooth system operation.

Air Valves

- 33 Air Release and Vacuum Breaker Valves
- 33VB Vacuum Breaker Valves
- 35 Air and Vacuum Breaker Valves
- 36 Series Combination Air Valves
- 34 Air Release Valves
- 34WW Wastewater Air Release Valves
- 35WW Wastewater Air and Vacuum Valves
- 36WW Combination Wastewater Air Release Valves
- 39 Triple Acting Air Valves



How Do
Air Valve work?
Scan QR Code



Hydraulic System Analysis

To make better informed decisions regarding your water systems, you need to do some analysis. The Cla-Tools Software Suite allows any user to analyze their current or future planned water systems. Analyze everything from VFD Pump Flow and Controllability to PRV Station or Check Valve design. Regardless of your needs, Cla-Tools can provide unique insights into numerous aspects of your water system.

Access our secure tools from your browser to perform real time analysis for any number of situations.

You will have immediate access to:

- **Cla-CAV** tool for analyzing pilot operated control valves for the potential of cavitation
- **Cla-Station** models PRV Station performance based on flow and pressure parameter inputs
- **Cla-Power** power consumption calculator
- **Cla-Blend** modeling tool for blending applications
- **Cla-Reg** design tool for the CRD-L and 90 Series pilot pressure reducing valves
- **ComparFlow** programs for gravity flow, pumping flow and pumping flow with VFDs focusing on valve installed "controllability" withing each system
- **Pump ComparFlow** program illustrates that reducing surge can be equal to or greater in importance to small energy savings with low loss type valves
- **VFD ComparFlow** are used there is also a hazard of surges because the relationship of motor speed with flow
- **Cla-Fire** sizing analysis of the direct acting Factory Set series of Pressure Regulating Valves
- **Cla-Fire ADJ** adjustable direct acting series PRVs
- **Cla-Check** aids the user in selecting a Cla-Val Check Valve based on numerous parameters
- **Cla-Quick** valve sizing tool based on published information in the engineering datasheets
- **Cla-Relief** tool for determining optimum relief valve sizes upstream of pumps and valves
- **CV Rubber Flex & CV RF-DBI-LH** provide sizing and performance information
- **Cla-AV** software provides visual design of air valve placement and sizing



LINK2VALVES



QUICK OVERVIEW

What is Link2Valve?

Managing all of the assets of a water system is a complex and daunting task. Tracking maintenance schedules and ensuring things are kept in good working order gets increasingly difficult with tighter budgets and reduced labor available.

We at Cla-Val appreciate that this is a tough task and have developed what we consider a very useful tool to assist in this endeavor. Introducing Link2Valves as an aid to water utilities, service personnel, anyone who has to maintain and keep records for their automatic control valves.

Link2Valves User interface

All recent versions of major browsers are compatible with the Link2Valves user interface.

Viewing Options

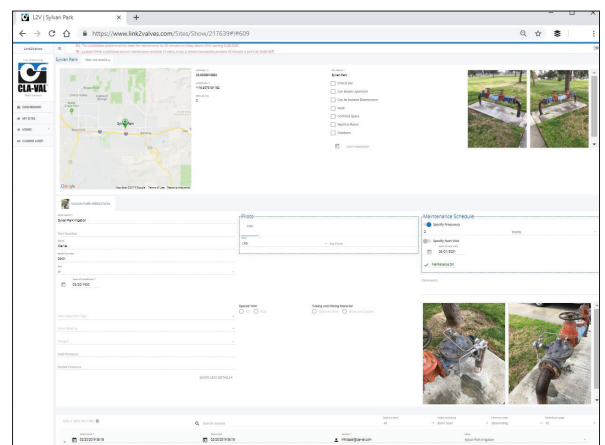
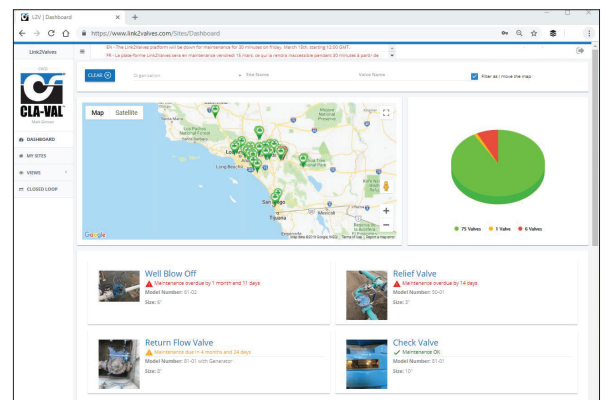
- Display of data in the time zone of your choice
- Download or export regular data in .csv format

Security

The Link2Valves platform offers a fully secure system environment:

- Accounts are protected against brute force attacks
- HTTPS connection with verified certificates
- Servers secured physically in Cla-Val owned facility
- Two Factor Authentication Available

Scan QR code at the top of the page to Download the Link2Valves App



How Do
Link2Valves work?
Scan QR Code

FIELD SERVICES

QUICK OVERVIEW



Support doesn't stop at the sale

Cla-Val Field Service is there when you need it, backed by more than 85 years of valve design and manufacturing experience.

Cla-Val Field Service provides expert, on-site maintenance and repair services for valves installed in waterworks, wastewater, fire protection systems, aviation fueling, marine and industrial applications throughout the US, backed by dedicated sales representatives ready to answer any and all questions.

Our experienced Field Service Technicians can help you with:

- Start-up assistance
- Troubleshooting
- Periodic maintenance
- Valve repairs
- Field retrofits



CVSA 
CLA-VAL SERVICE ACADEMY

Discover our
Field Service Department
Scan QR Code



GLOBAL LOCATIONS



Global Headquarters

1701 Placentia Avenue
Costa Mesa, CA 92627
949-722-4800
800-942-6326
info@cla-val.com
www.cla-val.com

Western USA

800-942-6326

Central USA

800-533-8181

Eastern USA

800-451-3030

Cla-Val Canada

905-563-4963
sales@cla-val.ca

Cla-Val Latin America

52-(33)-80007565
info@cla-val.com
www.cla-val-latinamerica.com

Cla-Val Europe

Chemin Des Mesanges 1
CH-1032 Romanel/Lausanne Switzerland
41-21-643-15-55
cla-val@cla-val.ch

Cla-Val United Kingdom

44-1892-514-400
info@cla-val.co.uk

Cla-Val France

33-4-72-25-92-93
cla-val@cla-val.fr

Cla-Val UAE

+ 971 4 5667665
cla-val@cla-val.ch

Cla-Val Asia Pacific

+ 64-3-9644860
info@cla-valpacific.com
www.cla-valpacific.com

Cla-Val Singapore

+ 65 91798177
wktan@cla-val.com

Cla-Val Thailand

+ 6681 4076118
info@cla-valpacific.com

Cla-Val China

info@cla-valpacific.com

Cla-Val Malaysia

info@cla-valpacific.com



www.cla-val.com