



Value Added For Engineers



92 Series Valve with CRD and CRL-60 Pilot Controls



Enjoy the many benefits of using valves and accessories produced by the world's leading manufacturer of automatic control valves.

Since 1936...

Cla-Val has been a leading manufacturer of automatic control valves, serving waterworks, industrial, fire protection, aviation fueling and marine customers throughout the world. Our commitment to excellence and continuous improvement shows in each valve we produce and in the many new products we introduce to the marketplace each year.

Cla-Val is a global company with headquarters and a twenty-acre manufacturing/foundry complex in Costa Mesa, California, in addition to production facilities in Canada, Switzerland, France, the UK and New Zealand.

Cla-Val's long history of manufacturing and industry excellence also enables us to provide the industry's most comprehensive program of hands-on, personalized technical/product training at our in-house training facilities in the US, Canada, Switzerland, France, the UK and New Zealand.

Cla-Val Automatic Control Valves are renowned for their quality and superior performance. The company is also known for consistently excellent customer service as well as innovation, specifically related to products that help to conserve water and energy.

Get More From Cla-Val

For new valves, it's best to include add-on features like those listed on the right during the specification process. Next best is to add supplemental features at the time of order placement. For existing, installed valves, it's never too late to retrofit or upgrade them to include new features and functions.

When you are facing an operational challenge, please consider the many accessories that can be included on your basic valves to enhance performance and get more from your investment in Cla-Val products.

For factory and regional sales contact information, please see back cover. Call the factory at 800.942.6326 to contact a technical advisor.



Scan to see our extensive product range on our website.

Table of Contents

Electronic Accessories

Model X105L	Limit Switch Assembly	4
Model X141-PT	Pressure Transmitter	4
Model X117D	Position Transmitter	4

Functional Enhancements

"B" Feature	CK2 Isolation Valve	5
"D" Feature	Check Valve w/Isolation Valve	5
"S" Feature	CV Speed Control	5

Service Life Enhancements

Stainless Steel Pilot, Tubing and Fittings		6
Epoxy Coating		6
Stem Upgrade	Delrin®	7
Stem Upgrade	Dura-Kleen®	7

System Safeguards

Model KO	Anti-Cavitation Trim	8
Hydraulic Back-Up for Electronic Valves		8
Model X140-1	Locking Cap for Pilots	9
Model X43H	Strainer	9

Power Generation

Model X143IP	Intermediate Power Generator	9
Model X143MP	Mini-Turbine Power Generator	9

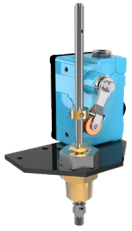
Information Gathering

Model X145	e-Display	10
Model X141	Pressure Gauges	10
Model X101D	Position Indicator	10
Model X101C	Position Indicator	10

Electronic Control

34 Series	Electronic Pilot Controls	11
Model VC-22D	Electronic Controller	11
Model UP-22D	Universal Control Panel	11
Model CTC	Programmable Timer Control	11

Electronic Accessories and Enhancements



Model X105L



Model X105L2

Model X105L & Model X105L2 Limit Switch Assemblies

- UL Listed switches available
- Actuated by the opening or closing of the valve on which it is mounted
- Weather-sealed and explosion proof
- Easy to adjust and can be field retrofitted to most Cla-Val control valves
- Ideal for many applications including process control, pump control, and motor starting or stopping



Model X141PT Pressure Transmitters

- 4 - 20 mA Loop Powered
- Feature on Electronic Control Valves
- Stainless Steel Construction
- Isolation Valve Included
- Compact and Rugged Construction
- Retrifiable
- May be combined with Cla-Val Model X141 Pressure Gauges for both local and remote valve pressure information



Model X117D Valve Position Transmitter

- Accurately monitors and transmits valve position
- Use with the 131VC Series Electronic Valve Controller
- 4-20 mA output signal
- Easily interfaced with SCADA
- Environmentally sealed to IP-68
- Can be field retrofitted without removal of the valve from the pipeline

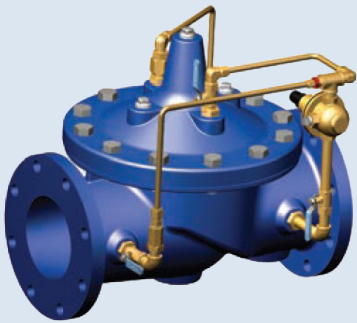
Functional Enhancements

“B” Feature: CK2 Isolation Valve



- Allows operator to manually override the automatic functions of the valve
- Enables operator to easily perform field testing of the main valve without removing the valve from the pipeline
- Provides a means to isolate individual sections of the pilot system
- Field retrofittable

“D” Feature: Check Valve with Isolation Valve



- Provides return flow protection in systems where there is a potential for the outlet pressure to be greater than the inlet pressure
- Enables an automatic control valve to also act as a check valve without disrupting primary function
- Retrofittable without removal of the valve from the pipeline
- Eliminates the need for a separate check valve in the system in the area adjacent to the control valve

“S” Feature: CV Speed Control



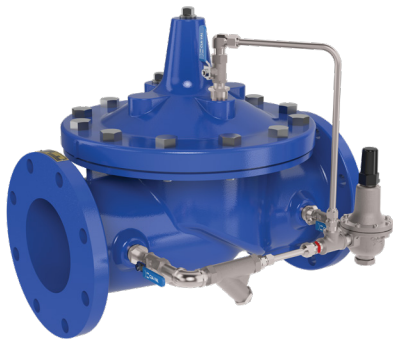
- Controls valve opening and closing speed
- Adjustable restriction device that acts as a needle valve when flow is in the direction of the stem
- When flow is in the reverse direction, the port opens fully to allow unrestricted flow
- Corrosion resistant, requires no lubrication
- Automatic operation in any position
- Simple to adjust and maintain

Service Life Enhancements

Optional Stainless Steel Tubing & Fittings

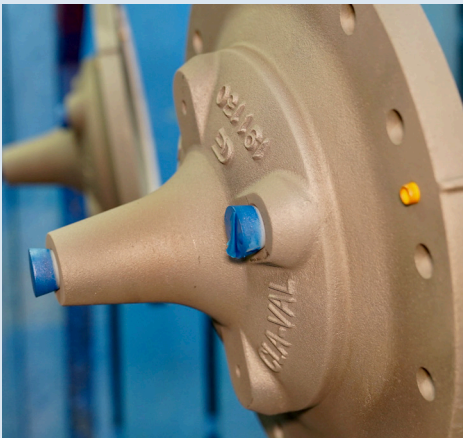
Specify Stainless Steel pilot, tubing and fittings help ensure maximum durability and the following benefits:

- Corrosion resistance
- Fire and heat resistance
- Inherently longer service life than other materials
- Impact resistance
- Strength-to-Weight advantage
- Hygienic
- Aesthetically pleasing for visible installations



Optional Epoxy Coating

- NSF/ANSI 61 fusion bonded epoxy coating
- Provides long term corrosion protection
- Fusion bonded coating adheres more permanently to the valves
- Affords greater protection against gouging, rough handling, wear and abrasion
- Resistant to cathodic disbondment
- More aesthetically pleasing than other coatings



Service Life Enhancements

Optional Dura-Kleen™ Stem

- Ideal for harsh water applications, especially those prone to calcium build-up
- Patented fluted surface of the Stainless Steel Dura-Kleen™ stem channels away deposits from the stem
- Frictionless operation
- Excellent preventative measure against stem issues arising in continuous service

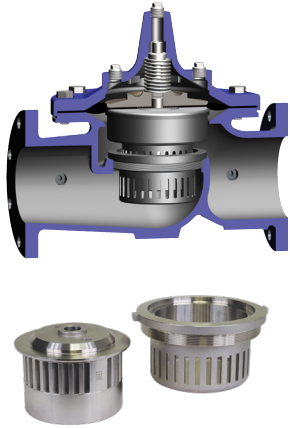


Optional Delrin® Sleeve Stem

- Ideal for harsh water applications with low differentials
- Chemically resistant with very low water adsorption
- Resistant to build-up
- Provides maximum durability because of the high stiffness and excellent dimensional stability of the Delrin® sleeve
- Frictionless operation

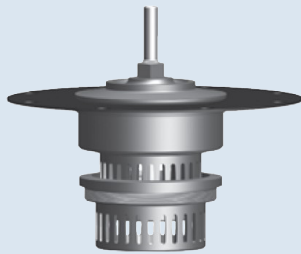


System Safeguards/Enhancements



Optional KO Anti-Cavitation Trim for New Model 100-01 Hytrol Valves

- Install in any Cla-Val Automatic Control valve for virtually cavitation free operation
- Ideal for applications with high pressure differentials or discharging to atmosphere
- Standard 316 Stainless Steel disc guide and seat
- Reduces noise and vibration
- Drip-tight, positive sealing
- Available in sizes from 1½" - 36"



KO Anti-Cavitation Trim Field Conversion Kit for Existing, Installed Model 100-01 Hytrol Valves

- Retrofit an existing, installed Cla-Val Automatic Control Valve with the KO Anti-Cavitation Conversion Kit to protect against damage caused by cavitation
- Experience all the benefits of new KO Anti-Cavitation Valve when the conversion kit is added to your valve without removing from the pipeline



Model CRD



Model CRL



Model CRL-60



Model CRA

Hydraulic Back-Up for Electronic Valves

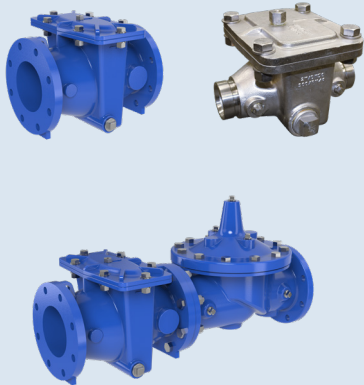
- Cla-Val Electronic Control Valves can be equipped with a hydraulic pilot control that will enable the valve to operate in the event of power loss
- Can be field retrofitted without removing the valve from the pipeline

System Safeguards/Enhancements



Model X140-1 316 Stainless Steel Locking Security Cap

- Stainless Steel cap encapsulates the pilot control's adjustment screw to prevent unauthorized access
- Available in three sizes
- Can be field retrofitted to an existing, installed pilot system



Model X43H H-Style Strainer

- Provides an effective means of removing unwanted solid particles in pipeline flow
- Prevents fouling and debris build-up in Cla-Val Automatic Control Valves
- Standard 316 Stainless Steel strainer mesh
- Standard Ductile Iron, Fusion Bonded, Epoxy Coated body for maximum durability
- Also available in 316 Stainless Steel with Grooved end connections
- Easy maintenance enabled by compact H-Style design
- Takes up less space than other pipeline strainers

Power Generation



Model X143IP generates up to 14 watts of power



X143MP generates up to 0.7 watts of power

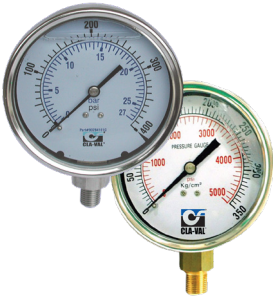
Retrofittable X143 Series Power Generators

The X143 Series Intermediate Power Generators are self contained power generation systems designed to be mounted on a Cla-Val Automatic Control Valve.

Advantages include:

- Uses the hydraulic energy of the system to generate power
- Retrofits to an existing Cla-Val Control Valve
- Can be specified on a new valve
- Ideal for isolated locations and confined spaces
- Generates power to operate onsite equipment without tying into the grid, including the following:
 - ▶ Electronic Control Valves
 - ▶ Communications Equipment
 - ▶ Data loggers that capture and store information

Information Gathering



“P” Feature: Model X141 Gauges

- Stainless Steel construction
- Available in 2 ½” - 4” sizes
- Provides easy access to pressure data
- Enables user to perform diagnostic performance testing of valve
- Gauge is equipped with an isolation valve for easy installation and change-out
- Can be easily field retrofitted to any Cla-Val Automatic Control Valve



“V” Feature: Model X101D Valve Position Indicator

- Provides quick and easy access to valve position information
- Equipped with a vent valve to exhaust any air that is trapped in the valve cover
- Leak-proof and frictionless operation
- Protected indicator rod encased in Pyrex tube
- Stainless Steel available



Model X101C Valve Position Indicator - FM Approved

- Displays easy-to-read indication of valve position
- Frictionless, leak proof operation
- Included on FM Approved valve in 3”, 4”, 6” and 8” sizes
- Easy to retrofit to an existing, installed Cla-Val Automatic Control Valve



Model X145 e-Display for New or Existing Valves

- Displays: Flow Rate, Total, Pressure, Position and mA
- Displays rate up to five digits and totals up to eight digits
- IP-67 Submersible
- SCADA compatible
- Customizable units
- Backlight optional
- Integral wall-mount hardware included

Electronic Control



Model
CRD-34



Model
CRL-34



Model
CDHS-34

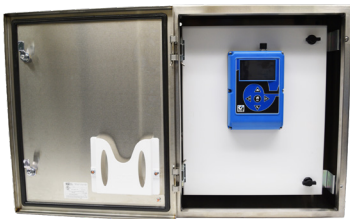
34 Series Electronic Controls

- Simplified Remote Valve Set-Point Control
- Isolated Input, 12-24VDC Input Power
- Reverse Polarity Protection
- IP-68 Submersible
- Pressure Reducing, Pressure Sustaining and Rate of Flow configurations available



Model VC-22D Electronic Controller

- Preinstalled valve application templates allow for easy setup & configuration
- Color screen displays valve application, along with real time system information
- Enclosure environmental rating of IP68



Model UP-22D Universal Control Panel

- Displays easy-to-read indication of valve position
- Frictionless, leak proof operation
- Included on FM Approved valve in 3", 4", 6" and 8" sizes
- Easy to retrofit to an existing, installed Cla-Val Automatic Control Valve



Model CTC Timer Control

- Displays: Flow Rate, Total, Pressure, Position and mA
- Displays rate up to five digits and totals up to eight digits
- IP-67 Submersible
- SCADA compatible
- Customizable units
- Backlight optional
- Integral wall-mount hardware included



Global Locations



Global Headquarters

1701 Placentia Avenue
Costa Mesa, CA 92627
949-722-4800
800-942-6326
info@cla-val.com
www.cla.val.com

Western USA
800-942-6326

Central USA
800-533-8181

Eastern USA
800-451-3030

Cla-Val Canada
905-563-4963
sales@cla-val.ca

Cla-Val Latin America

52-(33)-80007565
info@cla-val.com
www.cla-val-latinamerica.com

Cla-Val Europe

Chemin Des Mesanges 1
CH-1032 Romanel/Lausanne
Switzerland
41-21-643-15-55
cla-val@cla-val.ch

Cla-Val United Kingdom

44-1892-514-400
info@cla-val.co.uk

Cla-Val France

33-4-72-25-92-93
cla-val@cla-val.fr

Cla-Val Asia Pacific

+ 64-3-9644860
info@cla-valpacific.com
www.cla-valpacific.com

Cla-Val UAE

+ 971 4 5667665
cla-val@cla-val.ch

Cla-Val Singapore

+65 91798177
wktan@cla-val.com

Cla-Val China

info@cla-valpacific.com