



# Industrial Fire Protection

PRESSURE RELIEF

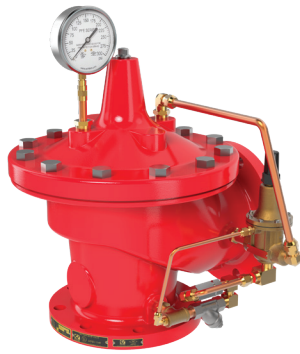


PRESSURE REDUCING



DELUGE VALVES

# Industrial Fire Protection

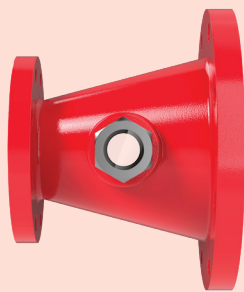


2050B-4KG1 (Angle)

## Model 50B-4KG1/2050B-4KG1 Fire Pump Pressure Relief Valve

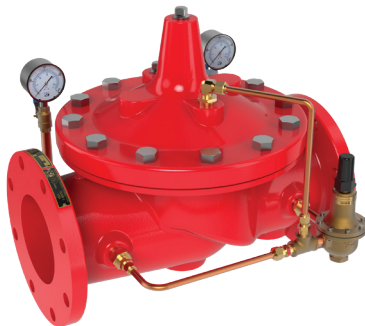
Modulates upon fire pump start-up to relieve excess capacity, while maintaining positive system pressure at the pump discharge and preventing surge.

- UL Listed in sizes 1.5" - 8"
- ULC Listed in sizes 1.5" - 8"
- FM Approved in sizes 3" - 8"



## Model WC-1 Waste Cone

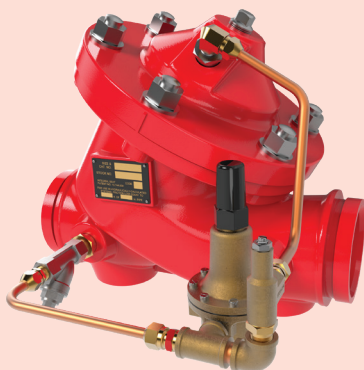
- Available for Onshore and Offshore Applications
- Manufactured in Accordance with NFPA 20 Requirements
- Available in Ductile Iron, NAB, 316 SS, and Super Duplex
- (2) 2" Sight Glasses per WC-1, available in 316 SS and Monel
- Single Body Casting (No Welding)
- 150# and 300# Flanges
- Raised Face and Flat Faced options available



## Model 90-21 Pressure Reducing Valve for Fire Applications

Automatically reduces a higher inlet pressure to a steady, lower outlet pressure, regardless of flow or inlet pressure fluctuations.

- UL Listed in sizes 1-1/2" - 12"
- ULC Listed in sizes 1-1/2" - 12"
- Grooved Ends in sizes 1-1/2" - 10"
- Available in Ductile Iron, Cast Steel, NAB, Super Duplex, others



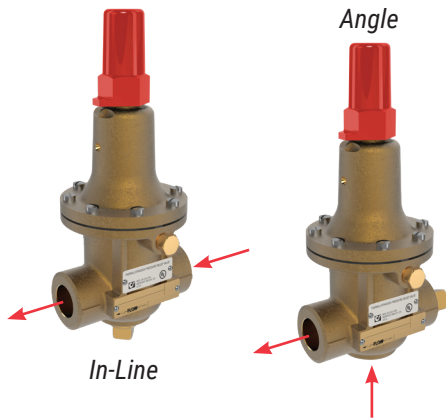
## Model 90-FPX Pressure Reducing Valve for Fire Applications

Cla-Val 90-FPX Pressure Reducing Valves are indispensable in any fire protection system. Available in sizes 2" thru 6", our diaphragm actuated design is proven to be highly reliable and easy to maintain.

- FM Approved in sizes 2" - 6"
- Grooved Ends in sizes 2" - 6"
- Available in Ductile Iron, Cast Steel, NAB, Super Duplex, others



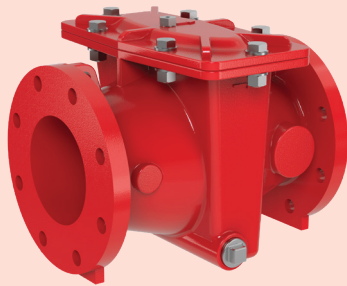
# Industrial Fire Protection



## Model 55L-60 Pressure Relief Valve / Fire Pump Casing Relief Valve

This Direct Acting Valve provides for precise pressure control, operating within very close pressure limits and may be installed in any position, making it ideal for tight locations.

- UL Listed and FM Approved in sizes 1/2", and 3/4"
- UL Listed in size 1"
- Available in Bronze, Monel, and 316 SS



## Model X43HL "H" Strainer

- Low Pressure Drop
- Service without removal from the line
- Available in: Ductile Iron with 316 SS Mesh or NAB with Titanium Mesh
- 150# and 300# Flanges
- 1-1/2" to 48" upon request



## Deluge Valves

Deluge Valves are a fast acting on-off control valve which either opens or closes when receiving a pneumatic, electric, hydraulic or manual actuation.

- Sizes: 3" - 12"
- Available in Ductile Iron, Cast Steel, Nickel Aluminum Bronze, 316 SS, and Super Duplex
- 150# and 300# Flanges, Grooved Ends
- See Deluge Catalog for Trim Options



## 33ATD Series Air Release Valve with Throttling Device

Protects fire protection systems by eliminating air and preventing vacuum conditions from forming in the pipeline.

- UL Listed in sizes 1", 2", 3", 4" and 6"
- NPT, 150# Flanged and 300# Flanged



## 34 Series Air Release Valve

The 34 Series Air Valve is designed to automatically vent entrained air that accumulates at high points in pipelines or pump casings. During system operation, the valve continuously releases small volumes of air, preventing the formation of large air pockets.

- UL Listed and FM Approved in sizes 1/2", 3/4", and 1"



# Industrial Fire Protection

## Series HV-100 Angle Hose Valves and TH Test Headers for Fire Protection Systems

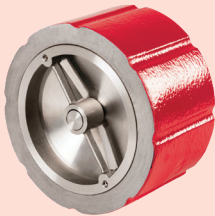


### Test Headers

- Manufactured in Accordance with NFPA 20 Requirements
- Developed for UL/FM Approved Fire Systems
- Available in sizes 4", 6", 8", and 10"
- Designed to allow 250 gpm per test connection

### HV-100-15 and HV-100-25/ HV-100-25E Hose Valves UL, ULC and FM

Available in a variety of hose thread adapters including BCT, CSA, NSST, NPSH, NST, QST, WCT, Louisville, Cleveland, Chicago, Pittsburgh, New Cincinnati, New York Corp, New York Fire Department, Richmond, and Raleigh



### 580 Silent Wafer Check Valve

A spring-loaded poppet allows the valve to close before flow reversal occurs, resulting in silent, non-slam closure.

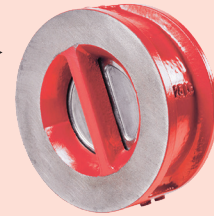
- FM Approved 125/150 Class Valves 2" - 10"



### 581 Silent Globe Check Valve

The valve's Ductile iron body with stainless steel trim offers watertight shutoff with metal-to-metal seating.

- FM Approved 125/150 Class Valves 2-1/2" - 12"



### 582 Two-Door Check Valve

The valve doors close before flow reversal, reducing the potential for water hammer.

- FM Approved 125/150 Class Valves 2-1/2" - 16"
- UL Listed 2-1/2" - 12"



## Support doesn't stop at the sale.

**Cla-Val Field Service is there when you need it, backed by more than 85 years of valve design and manufacturing experience.**

Cla-Val Field Service provides expert, on-site maintenance and repair services for valves installed in waterworks, wastewater, fire protection systems, aviation fueling, marine and industrial applications throughout the US, backed by dedicated sales representatives ready to answer any and all questions.

Our experienced Field Service Technicians can help you with:

- Start-up assistance
- Troubleshooting
- Periodic maintenance
- Valve repairs
- Field retrofits



We also have Regional Cla-Val Service Centers in the Southern California, Northern California, Arizona, Texas and New York. Outside those areas, factory authorized sales agents throughout North America offer similar field services to ensure that a solution to your operational challenges is never more than a phone call away.